



[Go to Product page](#)

Datasheet for ABIN2777769
anti-AHCYL1 antibody (N-Term)

3 Images

Overview

Quantity:	100 µL
Target:	AHCYL1
Binding Specificity:	N-Term
Reactivity:	Human, Mouse, Rat, Cow, Rabbit, Guinea Pig, Horse, Dog, Zebrafish (Danio rerio)
Host:	Rabbit
Clonality:	Polyclonal
Conjugate:	This AHCYL1 antibody is un-conjugated
Application:	Western Blotting (WB)

Product Details

Immunogen:	The immunogen is a synthetic peptide directed towards the N terminal region of human AHCYL1
Sequence:	TDSYSSAASY TDSSDDEVSP REKQQTNSKG SSNFCVKNIK QAEFGREIE
Predicted Reactivity:	Cow: 100%, Dog: 100%, Guinea Pig: 100%, Horse: 100%, Human: 100%, Mouse: 100%, Rabbit: 100%, Rat: 100%, Zebrafish: 79%
Characteristics:	This is a rabbit polyclonal antibody against AHCYL1. It was validated on Western Blot using a cell lysate as a positive control.
Purification:	Affinity Purified

Target Details

Target:	AHCYL1
---------	--------

Target Details

Alternative Name:	AHCYL1 (AHCYL1 Products)
Background:	<p>AHCYL1 belongs to the adenosylhomocysteinase family. The protein, an inositol 1,4,5-trisphosphate receptor-binding protein, specifically binds to and activates pancreas-type Na⁺/HCO₃⁻ cotransporter 1 (pNBC1). The regulation through AHCYL1 enables NBC1 variants to have different physiological roles.</p> <p>Alias Symbols: DCAL, IRBIT, PRO0233, XPVKONA</p> <p>Protein Interaction Partner: PSMD9, PPL, MEOX2, GEM, DACH1, CDKN2C, BID, SOX30, AHCYL1, SLC23A1, ZNF165, UBC, UBA6, PPP2CA, PDCD6IP, SRPK1, SRPK2, FBXL7, SOX2, CSNK1E, tat, ECT2, SNCG, SUMO2, SKP1, TUBB6, GINS4, SH3BGRL3, THADA, KIAA1598, UBQLN4, PPIL3, UFM1, UFC1, UBXN1, UBQLN1, PSA</p> <p>Protein Size: 530</p>
Molecular Weight:	59 kDa
Gene ID:	10768
NCBI Accession:	NM_006621 , NP_006612
UniProt:	O43865

Application Details

Application Notes:	Optimal working dilutions should be determined experimentally by the investigator.
Comment:	Antigen size: 530 AA
Restrictions:	For Research Use only

Handling

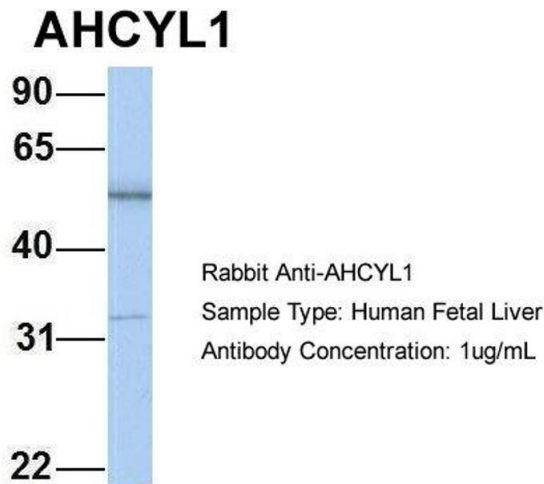
Format:	Liquid
Concentration:	Lot specific
Buffer:	Liquid. Purified antibody supplied in 1x PBS buffer with 0.09 % (w/v) sodium azide and 2 % sucrose.
Preservative:	Sodium azide
Precaution of Use:	This product contains Sodium azide: a POISONOUS AND HAZARDOUS SUBSTANCE which should be handled by trained staff only.
Handling Advice:	Avoid repeated freeze-thaw cycles.

Handling

Storage: -20 °C

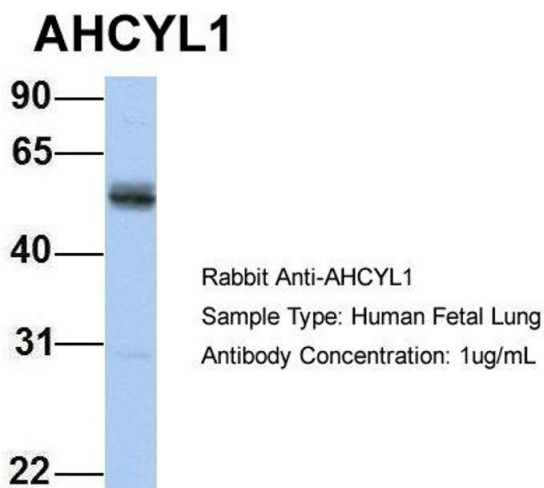
Storage Comment: For short term use, store at 2-8°C up to 1 week. For long term storage, store at -20°C in small aliquots to prevent freeze-thaw cycles.

Images



Western Blotting

Image 1. Host: Rabbit Target Name: AHCYL1 Sample Type: Human Fetal Liver Antibody Dilution: 1.0ug/ml



Western Blotting

Image 2. Host: Rabbit Target Name: AHCYL1 Sample Type: Human Fetal Lung Antibody Dilution: 1.0ug/ml



Western Blotting

Image 3. WB Suggested Anti-AHCYL1 Antibody Titration: 0.2-1 ug/ml ELISA Titer: 1:32500 Positive Control: Human brain