

Datasheet for ABIN2777790

**anti-Cyclin L1 antibody (N-Term)**[Go to Product page](#)**1** Image

## Overview

Quantity:	100 µL
Target:	Cyclin L1 (CCNL1)
Binding Specificity:	N-Term
Reactivity:	Human, Mouse, Rat, Dog, Cow, Rabbit, Guinea Pig, Zebrafish (Danio rerio)
Host:	Rabbit
Clonality:	Polyclonal
Conjugate:	This Cyclin L1 antibody is un-conjugated
Application:	Western Blotting (WB)

## Product Details

Sequence:	MATGQVLFR FFYSKSFVKH SFEIVAMACI NLASKIEEAP RRIRDVINVF
Predicted Reactivity:	Cow: 100%, Dog: 100%, Guinea Pig: 100%, Human: 100%, Mouse: 100%, Rabbit: 100%, Rat: 100%, Zebrafish: 100%
Characteristics:	This is a rabbit polyclonal antibody against Ccnl1. It was validated on Western Blot.
Purification:	Affinity Purified

## Target Details

Target:	Cyclin L1 (CCNL1)
Alternative Name:	Ccnl1 ( <a href="#">CCNL1 Products</a> )
Background:	Ccnl1 is a cyclin protein that is regulated by cAMP response element binding protein (CREB), it

### Target Details

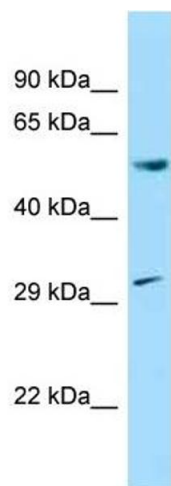
	may be involved with differential RNA processing, such as alternative splicing. Alias Symbols: Ania-6a, Ccnl MGC93069, Ccnl Protein Size: 527
Molecular Weight:	57 kDa
Gene ID:	114121
NCBI Accession:	<a href="#">NM_053662</a> , <a href="#">NP_446114</a>
UniProt:	<a href="#">Q9R1Q2</a>

### Application Details

Application Notes:	Optimal working dilutions should be determined experimentally by the investigator.
Comment:	Antigen size: 527 AA
Restrictions:	For Research Use only

### Handling

Format:	Liquid
Concentration:	Lot specific
Buffer:	Liquid. Purified antibody supplied in 1x PBS buffer with 0.09 % (w/v) sodium azide and 2 % sucrose.
Preservative:	Sodium azide
Precaution of Use:	This product contains Sodium azide: a POISONOUS AND HAZARDOUS SUBSTANCE which should be handled by trained staff only.
Handling Advice:	Avoid repeated freeze-thaw cycles.
Storage:	-20 °C
Storage Comment:	For short term use, store at 2-8°C up to 1 week. For long term storage, store at -20°C in small aliquots to prevent freeze-thaw cycles.



Western Blotting

**Image 1.** WB Suggested Anti-Ccnl1 Antibody Titration: 1.0 ug/ml Positive Control: Rat Brain