

Datasheet for ABIN2777797
anti-GRHL3 antibody (C-Term)[Go to Product page](#)

2 Images

1 Publication

Overview

| | |
|----------------------|--|
| Quantity: | 100 µL |
| Target: | GRHL3 |
| Binding Specificity: | C-Term |
| Reactivity: | Human, Mouse, Dog, Rat, Cow, Guinea Pig, Horse, Rabbit |
| Host: | Rabbit |
| Clonality: | Polyclonal |
| Conjugate: | This GRHL3 antibody is un-conjugated |
| Application: | Western Blotting (WB) |

Product Details

| | |
|-----------------------|---|
| Immunogen: | The immunogen is a synthetic peptide directed towards the C terminal region of human GRHL3 |
| Sequence: | SGVKGCLLSG FRGNETTYLR PETDLETPPV LFIPNVHFSS LQRSGGAAPS |
| Predicted Reactivity: | Cow: 92%, Dog: 92%, Guinea Pig: 92%, Horse: 92%, Human: 100%, Mouse: 100%, Rabbit: 92%, Rat: 92% |
| Characteristics: | This is a rabbit polyclonal antibody against GRHL3. It was validated on Western Blot using a cell lysate as a positive control. |
| Purification: | Affinity Purified |

Target Details

| | |
|---------|-------|
| Target: | GRHL3 |
|---------|-------|

Target Details

| | |
|-------------------|--|
| Alternative Name: | GRHL3 (GRHL3 Products) |
| Background: | <p>GRHL3 is a member of the grainyhead family of transcription factors. GRHL3 interacts with leader-binding protein 32 (LBP-32) and brother of mammalian grainyhead (BOM), and may function as a transcription factor during development. Multiple transcript variants encoding distinct isoforms have been identified for this gene. This gene encodes a member of the grainyhead family of transcription factors. The encoded protein interacts with leader-binding protein 32 (LBP-32) and brother of mammalian grainyhead (BOM), and may function as a transcription factor during development. Multiple transcript variants encoding distinct isoforms have been identified for this gene. Additional transcript variants have been described, but their biological nature has not been determined.</p> <p>Alias Symbols: SOM, TFCP2L4</p> <p>Protein Interaction Partner: PRMT6, PRMT5, PRMT1, GRHL1, GRHL3, GRHL2,</p> <p>Protein Size: 509</p> |
| Molecular Weight: | 57 kDa |
| Gene ID: | 57822 |
| NCBI Accession: | NM_198174 , NP_937817 |

Application Details

| | |
|--------------------|--|
| Application Notes: | Optimal working dilutions should be determined experimentally by the investigator. |
| Comment: | Antigen size: 509 AA |
| Restrictions: | For Research Use only |

Handling

| | |
|--------------------|--|
| Format: | Liquid |
| Concentration: | Lot specific |
| Buffer: | Liquid. Purified antibody supplied in 1x PBS buffer with 0.09 % (w/v) sodium azide and 2 % sucrose. |
| Preservative: | Sodium azide |
| Precaution of Use: | This product contains Sodium azide: a POISONOUS AND HAZARDOUS SUBSTANCE which should be handled by trained staff only. |
| Handling Advice: | Avoid repeated freeze-thaw cycles. |

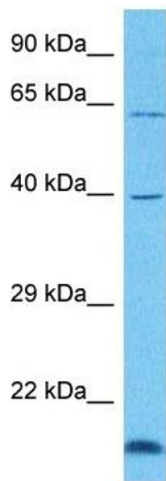
Handling

| | |
|------------------|---|
| Storage: | -20 °C |
| Storage Comment: | For short term use, store at 2-8°C up to 1 week. For long term storage, store at -20°C in small aliquots to prevent freeze-thaw cycles. |

Publications

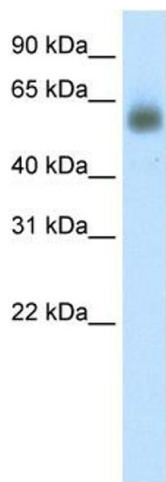
| | |
|-------------------|--|
| Product cited in: | Gerhard, Wagner, Feingold, Shenmen, Grouse, Schuler, Klein, Old, Rasooly, Good, Guyer, Peck, Derge, Lipman, Collins, Jang, Sherry, Feolo, Misquitta, Lee, Rotmistrovsky, Greenhut, Schaefer, Buetow et al.: "The status, quality, and expansion of the NIH full-length cDNA project: the Mammalian Gene Collection (MGC). ..." in: Genome research , Vol. 14, Issue 10B, pp. 2121-7, (2004) (PubMed). |
|-------------------|--|

Images



Western Blotting

Image 1. Host: Rabbit Target Name: GRHL3 Sample Tissue: Human 786-0 Whole Cell Antibody Dilution: 1ug/ml



Western Blotting

Image 2. WB Suggested Anti-GRHL3 Antibody Titration: 0.2-1 ug/ml ELISA Titer: 1:12500 Positive Control: Human Placenta