

Datasheet for ABIN2777802
anti-PURA antibody (Middle Region)

2 Images

[Go to Product page](#)

Overview

Quantity:	100 µL
Target:	PURA
Binding Specificity:	Middle Region
Reactivity:	Human, Mouse, Rat, Cow, Dog, Rabbit, Sheep, Guinea Pig
Host:	Rabbit
Clonality:	Polyclonal
Conjugate:	This PURA antibody is un-conjugated
Application:	Western Blotting (WB), Immunohistochemistry (IHC)

Product Details

Immunogen:	The immunogen is a synthetic peptide directed towards the middle region of human PURA
Sequence:	VEFRDYLGF IEHYAQLGPS QPPDLAQAQD EPRRALKSEF LVRENKYYM
Predicted Reactivity:	Cow: 100%, Dog: 100%, Guinea Pig: 100%, Human: 100%, Mouse: 100%, Rabbit: 100%, Rat: 100%, Sheep: 100%
Characteristics:	This is a rabbit polyclonal antibody against PURA. It was validated on Western Blot using a cell lysate as a positive control.
Purification:	Affinity Purified

Target Details

Target:	PURA
---------	------

Target Details

Alternative Name:	PURA (PURA Products)
Background:	<p>PURA is a sequence-specific, single-stranded DNA-binding protein. It binds preferentially to the single strand of the purine-rich element termed PUR, which is present at origins of replication and in gene flanking regions in a variety of eukaryotes from yeasts through humans. Thus, it is implicated in the control of both DNA replication and transcription. Deletion of this gene has been associated with myelodysplastic syndrome and acute myelogenous leukemia. This gene product is a sequence-specific, single-stranded DNA-binding protein. It binds preferentially to the single strand of the purine-rich element termed PUR, which is present at origins of replication and in gene flanking regions in a variety of eukaryotes from yeasts through humans. Thus, it is implicated in the control of both DNA replication and transcription. Deletion of this gene has been associated with myelodysplastic syndrome and acute myelogenous leukemia.</p> <p>Publication Note: This RefSeq record includes a subset of the publications that are available for this gene. Please see the Entrez Gene record to access additional publications.</p> <p>Alias Symbols: PUR-ALPHA, PUR1, PURALPHA</p> <p>Protein Interaction Partner: RAF1, UBC, LIN28B, LIN28A, BMI1, TARDBP, IGSF8, ICAM1, IL7R, ZNF638, DDX23, RFC3, RFC2, RB1, PURB, POLA1, CAND1, CUL1, CUL3, EIF2AK2, POU5F1, MEPECE, HNRNPA1, ADAP1, CCNT1, E2F1, SP1, YBX1, CDK5, CNBP, Jvvp5,</p> <p>Protein Size: 322</p>
Molecular Weight:	35 kDa
Gene ID:	5813
NCBI Accession:	NM_005859 , NP_005850
UniProt:	Q00577

Application Details

Application Notes:	Optimal working dilutions should be determined experimentally by the investigator.
Comment:	Antigen size: 322 AA
Restrictions:	For Research Use only

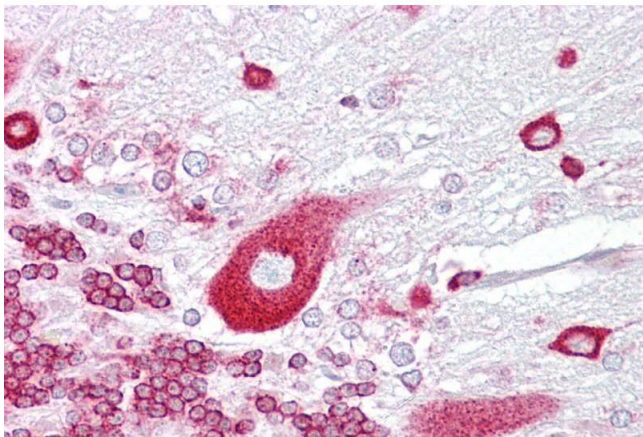
Handling

Format:	Liquid
Concentration:	Lot specific
Buffer:	Liquid. Purified antibody supplied in 1x PBS buffer with 0.09 % (w/v) sodium azide and 2 %

Handling

	sucrose.
Preservative:	Sodium azide
Precaution of Use:	This product contains Sodium azide: a POISONOUS AND HAZARDOUS SUBSTANCE which should be handled by trained staff only.
Handling Advice:	Avoid repeated freeze-thaw cycles.
Storage:	-20 °C
Storage Comment:	For short term use, store at 2-8°C up to 1 week. For long term storage, store at -20°C in small aliquots to prevent freeze-thaw cycles.

Images



Immunohistochemistry

Image 1. Immunohistochemistry with Brain, cerebellum tissue at an antibody concentration of 5µg/ml using anti-PURA antibody (ARP33202_P050)



Western Blotting

Image 2. WB Suggested Anti-PURA Antibody Titration: 0.2-1 ug/ml ELISA Titer: 1:62500 Positive Control: MCF7 cell lysate PURA is strongly supported by BioGPS gene expression data to be expressed in Human MCF7 cells