

Datasheet for ABIN2777814  
**anti-RFXAP antibody (Middle Region)**



[Go to Product page](#)

1 Image

## Overview

Quantity:	100 µL
Target:	RFXAP
Binding Specificity:	Middle Region
Reactivity:	Human, Guinea Pig
Host:	Rabbit
Clonality:	Polyclonal
Conjugate:	This RFXAP antibody is un-conjugated
Application:	Western Blotting (WB)

## Product Details

Immunogen:	The immunogen is a synthetic peptide directed towards the middle region of human RFXAP
Sequence:	SDQALNCGGT ASTGSAGNVK LEESADNILS IVKQRTGSFG DRPARPTLLE
Predicted Reactivity:	Guinea Pig: 100%, Human: 100%
Characteristics:	This is a rabbit polyclonal antibody against RFXAP. It was validated on Western Blot using a cell lysate as a positive control.
Purification:	Affinity Purified

## Target Details

Target:	RFXAP
Alternative Name:	RFXAP ( <a href="#">RFXAP Products</a> )

## Target Details

---

**Background:** RFXAP is part of the RFX complex that binds to the X-box of MHC II promoters. Major histocompatibility (MHC) class II molecules are transmembrane proteins that have a central role in development and control of the immune system. The protein encoded by this gene, along with regulatory factor X-associated ankyrin-containing protein and regulatory factor-5, forms a complex that binds to the X box motif of certain MHC class II gene promoters and activates their transcription. Once bound to the promoter, this complex associates with the non-DNA-binding factor MHC class II transactivator, which controls the cell type specificity and inducibility of MHC class II gene expression. Mutations in this gene have been linked to bare lymphocyte syndrome type II, complementation group D. Transcript variants utilizing different polyA signals have been found for this gene. Sequence Note: This RefSeq record was created from transcript and genomic sequence data because transcript sequence consistent with the reference genome assembly was not available for all regions of the RefSeq transcript. The extent of this transcript is supported by transcript alignments. Publication Note: This RefSeq record includes a subset of the publications that are available for this gene. Please see the Entrez Gene record to access additional publications.

Alias Symbols: -

Protein Interaction Partner: EPS8, NHP2L1, NCL, MLLT1, HDAC4, SMARCA4, RFXANK, RFX5,

Protein Size: 272

---

Molecular Weight: 28 kDa

---

Gene ID: 5994

---

NCBI Accession: [NM\\_000538](#), [NP\\_000529](#)

---

UniProt: [O00287](#)

## Application Details

---

Application Notes: Optimal working dilutions should be determined experimentally by the investigator.

---

Comment: Antigen size: 272 AA

---

Restrictions: For Research Use only

## Handling

---

Format: Liquid

---

Concentration: Lot specific

---

Buffer: Liquid. Purified antibody supplied in 1x PBS buffer with 0.09 % (w/v) sodium azide and 2 %

---

## Handling

---

sucrose.

Preservative: Sodium azide

Precaution of Use: This product contains Sodium azide: a POISONOUS AND HAZARDOUS SUBSTANCE which should be handled by trained staff only.

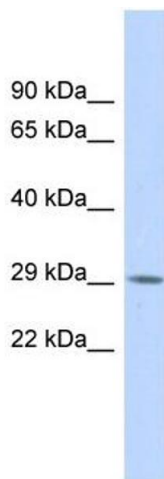
Handling Advice: Avoid repeated freeze-thaw cycles.

Storage: -20 °C

Storage Comment: For short term use, store at 2-8°C up to 1 week. For long term storage, store at -20°C in small aliquots to prevent freeze-thaw cycles.

## Images

---



### Western Blotting

**Image 1.** WB Suggested Anti-RFXAP Antibody Titration: 0.2-1 ug/ml ELISA Titer: 1:62500 Positive Control: Human Pancreas