

Datasheet for ABIN2777815  
**anti-RING1 antibody (Middle Region)**



[Go to Product page](#)

2 Images

### Overview

Quantity:	100 µL
Target:	RING1
Binding Specificity:	Middle Region
Reactivity:	Human, Mouse, Rat, Dog, Cow, Guinea Pig, Horse, Rabbit
Host:	Rabbit
Clonality:	Polyclonal
Conjugate:	This RING1 antibody is un-conjugated
Application:	Western Blotting (WB), Immunohistochemistry (IHC)

### Product Details

Immunogen:	The immunogen is a synthetic peptide directed towards the middle region of human RING1
Sequence:	TGGGGTGGVG GGAGSEDSGD RGGTLGGGTL GPPSPPGAPS PPEPGGEIEL
Predicted Reactivity:	Cow: 100%, Dog: 100%, Guinea Pig: 100%, Horse: 100%, Human: 100%, Mouse: 100%, Rabbit: 100%, Rat: 100%
Characteristics:	This is a rabbit polyclonal antibody against RING1. It was validated on Western Blot using a cell lysate as a positive control.
Purification:	Affinity Purified

### Target Details

Target:	RING1
---------	-------

## Target Details

Alternative Name:	RING1 ( <a href="#">RING1 Products</a> )
Background:	<p>RING1 belongs to the RING finger family, members of which characterized by a RING domain, a zinc-binding motif related to the zinc finger domain. The protein can bind DNA and can act as a transcriptional repressor. It is associated with the multimeric pol</p> <p>Alias Symbols: RNF1, RING1A</p> <p>Protein Interaction Partner: CBX8, RYBP, YAF2, BMI1, UBC, SNAI1, EED, RNF2, HECW2, CSNK2A2, YY1, FBXO38, CBX7, CBX6, FHL1, TP53, NOTCH1, APP, PCGF1, PCGF5, PCGF6, PCGF3, PCGF2, CBX2, PHC3, WDR5, CBX4, PHC2, PHC1, YY2, ZFP42, SMARCAD1, PIK3R3, TOP2A, TERF2, TERF1, USP11, USP7, CENPA,</p> <p>Protein Size: 406</p>
Molecular Weight:	42 kDa
Gene ID:	6015
NCBI Accession:	<a href="#">NM_002931</a> , <a href="#">NP_002922</a>
UniProt:	<a href="#">Q06587</a>

## Application Details

Application Notes:	Optimal working dilutions should be determined experimentally by the investigator.
Comment:	Antigen size: 406 AA
Restrictions:	For Research Use only

## Handling

Format:	Liquid
Concentration:	Lot specific
Buffer:	Liquid. Purified antibody supplied in 1x PBS buffer with 0.09 % (w/v) sodium azide and 2 % sucrose.
Preservative:	Sodium azide
Precaution of Use:	This product contains Sodium azide: a POISONOUS AND HAZARDOUS SUBSTANCE which should be handled by trained staff only.
Handling Advice:	Avoid repeated freeze-thaw cycles.
Storage:	-20 °C

Handling

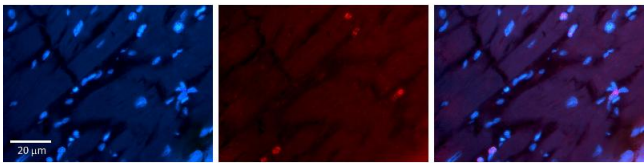
Storage Comment: For short term use, store at 2-8°C up to 1 week. For long term storage, store at -20°C in small aliquots to prevent freeze-thaw cycles.

Images



Western Blotting

**Image 1.** WB Suggested Anti-RING1 Antibody Titration: 0.2-1 ug/ml ELISA Titer: 1:312500 Positive Control: COLO205 cell lysate



Immunohistochemistry

**Image 2.** Rabbit Anti-RING1 Antibody Catalog Number: ARP33227\_P050 Formalin Fixed Paraffin Embedded Tissue: Human heart Tissue Observed Staining: Nucleus Primary Antibody Concentration: 1:100 Other Working Concentrations: 1:600 Secondary Antibody: Donkey anti-Rabbit-Cy3 Secondary Antibody Concentration: 1:200 Magnification: 20X Exposure Time: 0.5 - 2.0 sec