

Datasheet for ABIN2777819

**anti-DMRTA1 antibody (Middle Region)**[Go to Product page](#)**1** Image

## Overview

Quantity:	100 µL
Target:	DMRTA1
Binding Specificity:	Middle Region
Reactivity:	Human, Rat, Cow, Rabbit, Horse
Host:	Rabbit
Clonality:	Polyclonal
Conjugate:	This DMRTA1 antibody is un-conjugated
Application:	Western Blotting (WB)

## Product Details

Immunogen:	The immunogen is a synthetic peptide directed towards the middle region of human DMRTA1
Sequence:	AENPQSTGGP AAGAALGLGA LRQASGSATP AFEVFQQDYP EEKQEQKESK
Predicted Reactivity:	Cow: 85%, Horse: 92%, Human: 100%, Rabbit: 79%, Rat: 86%
Characteristics:	This is a rabbit polyclonal antibody against DMRTA1. It was validated on Western Blot using a cell lysate as a positive control.
Purification:	Affinity Purified

## Target Details

Target:	DMRTA1
Alternative Name:	DMRTA1 ( <a href="#">DMRTA1 Products</a> )

## Target Details

Background: DMRTA1 may be involved in sexual development.  
Alias Symbols: DMO, MGC163307, MGC163309  
Protein Interaction Partner: STAT5B, ORC5, HSP90AA1,  
Protein Size: 504

Molecular Weight: 53 kDa

Gene ID: 63951

NCBI Accession: [NM\\_022160](#), [NP\\_071443](#)

UniProt: [Q5VZB9](#)

## Application Details

Application Notes: Optimal working dilutions should be determined experimentally by the investigator.

Comment: Antigen size: 504 AA

Restrictions: For Research Use only

## Handling

Format: Liquid

Concentration: Lot specific

Buffer: Liquid. Purified antibody supplied in 1x PBS buffer with 0.09 % (w/v) sodium azide and 2 % sucrose.

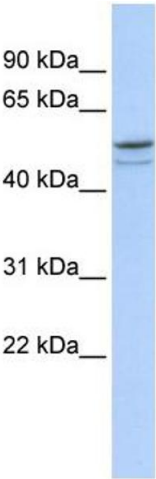
Preservative: Sodium azide

Precaution of Use: This product contains Sodium azide: a POISONOUS AND HAZARDOUS SUBSTANCE which should be handled by trained staff only.

Handling Advice: Avoid repeated freeze-thaw cycles.

Storage: -20 °C

Storage Comment: For short term use, store at 2-8°C up to 1 week. For long term storage, store at -20°C in small aliquots to prevent freeze-thaw cycles.



Western Blotting

**Image 1.** WB Suggested Anti-DMRTA1 Antibody Titration:  
0.2-1 ug/ml ELISA Titer: 1:12500 Positive Control: Hela cell lysate