

Datasheet for ABIN2777828

anti-PRDM16 antibody (Middle Region)[Go to Product page](#)**1** Image

Overview

Quantity:	100 µL
Target:	PRDM16
Binding Specificity:	Middle Region
Reactivity:	Human, Mouse, Rat, Dog, Guinea Pig, Horse, Cow, Pig
Host:	Rabbit
Clonality:	Polyclonal
Conjugate:	This PRDM16 antibody is un-conjugated
Application:	Western Blotting (WB)

Product Details

Immunogen:	The immunogen is a synthetic peptide directed towards the middle region of human PRDM16
Sequence:	LNHTQDAKLP SPLGNPALPL VSAVSNSSQG TTAAAGPEEK FESRLEDSCV
Predicted Reactivity:	Cow: 92%, Dog: 77%, Guinea Pig: 86%, Horse: 85%, Human: 100%, Mouse: 79%, Pig: 92%, Rat: 86%
Characteristics:	This is a rabbit polyclonal antibody against PRDM16. It was validated on Western Blot.
Purification:	Affinity Purified

Target Details

Target:	PRDM16
Alternative Name:	PRDM16 (PRDM16 Products)

Target Details

Background:	<p>The reciprocal translocation t(1,3)(p36,q21) occurs in a subset of myelodysplastic syndrome (MDS) and acute myeloid leukemia (AML). This gene is located near the 1p36.3 breakpoint and has been shown to be specifically expressed in the t(1:3)(p36,q21)-positive MDS/AML. The protein encoded by this gene is a zinc finger transcription factor and contains an N-terminal PR domain. The translocation results in the overexpression of a truncated version of this protein that lacks the PR domain, which may play an important role in the pathogenesis of MDS and AML. Alternatively spliced transcript variants encoding distinct isoforms have been reported.</p> <p>Alias Symbols: KIAA1675, MEL1, PFM13</p> <p>Protein Interaction Partner: TFAP4, UBC, HDAC2, Ctbp2, SUMO1, SKI, SMAD3, SMAD2, INADL, Protein Size: 1275</p>
Molecular Weight:	140 kDa
Gene ID:	63976
NCBI Accession:	NM_022114 , NP_071397
UniProt:	Q9HAZ2
Pathways:	Stem Cell Maintenance , Brown Fat Cell Differentiation

Application Details

Application Notes:	Optimal working dilutions should be determined experimentally by the investigator.
Comment:	Antigen size: 1275 AA
Restrictions:	For Research Use only

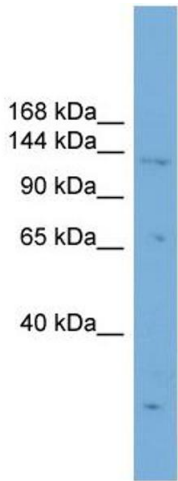
Handling

Format:	Liquid
Concentration:	Lot specific
Buffer:	Liquid. Purified antibody supplied in 1x PBS buffer with 0.09 % (w/v) sodium azide and 2 % sucrose.
Preservative:	Sodium azide
Precaution of Use:	This product contains Sodium azide: a POISONOUS AND HAZARDOUS SUBSTANCE which should be handled by trained staff only.
Handling Advice:	Avoid repeated freeze-thaw cycles.

Handling

Storage:	-20 °C
Storage Comment:	For short term use, store at 2-8°C up to 1 week. For long term storage, store at -20°C in small aliquots to prevent freeze-thaw cycles.

Images



Western Blotting

Image 1. WB Suggested Anti-PRDM16 Antibody Titration: 0.2-1 ug/ml ELISA Titer: 1:62500 Positive Control: HepG2 cell lysate