



[Go to Product page](#)

Datasheet for ABIN2777829

anti-PRDM14 antibody (Middle Region)

2 Images

Overview

Quantity:	100 µL
Target:	PRDM14
Binding Specificity:	Middle Region
Reactivity:	Human, Pig, Cow, Dog, Rabbit, Horse
Host:	Rabbit
Clonality:	Polyclonal
Conjugate:	This PRDM14 antibody is un-conjugated
Application:	Western Blotting (WB), Immunohistochemistry (IHC)

Product Details

Immunogen:	The immunogen is a synthetic peptide directed towards the middle region of human PRDM14
Sequence:	GVTPSLEHPA SLHHAISGLL VPPDSSGSDS LPQTLDKDSL QLPEGLCLMQ
Predicted Reactivity:	Cow: 86%, Dog: 86%, Horse: 86%, Human: 100%, Pig: 86%, Rabbit: 100%
Characteristics:	This is a rabbit polyclonal antibody against PRDM14. It was validated on Western Blot and immunohistochemistry.
Purification:	Protein A purified

Target Details

Target:	PRDM14
Alternative Name:	PRDM14 (PRDM14 Products)

Target Details

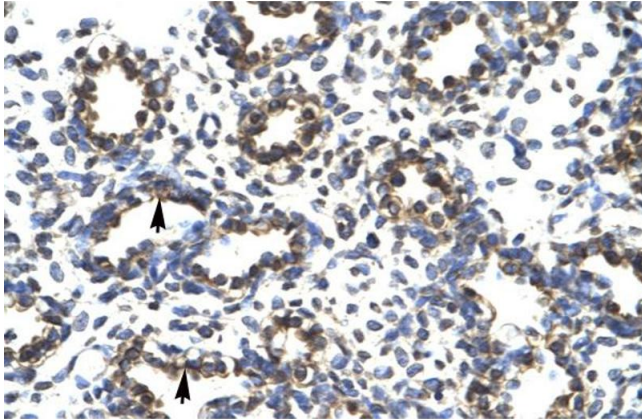
Background:	PRDM14 is part of a family of PR-domain genes that are involved in tumorigenesis. Alias Symbols: PFM11 Protein Interaction Partner: MIA3, TEKT4, TTC32, HEXIM2, ATPAF2, BEX2, RCOR3, GPATCH2L, CDCA7L, HSPB7, AKAP9, EIF4E2, CBFA2T2, RAD51D, PSMA1, RUNX1T1, DGCR6, PRKAB2, Dlg4, ID3, Protein Size: 571
Molecular Weight:	64 kDa
Gene ID:	63978
NCBI Accession:	NM_024504 , NP_078780
UniProt:	Q9GZV8

Application Details

Application Notes:	Optimal working dilutions should be determined experimentally by the investigator.
Comment:	Antigen size: 571 AA
Restrictions:	For Research Use only

Handling

Format:	Liquid
Concentration:	Lot specific
Buffer:	Liquid. Purified antibody supplied in 1x PBS buffer with 0.09 % (w/v) sodium azide and 2 % sucrose.
Preservative:	Sodium azide
Precaution of Use:	This product contains Sodium azide: a POISONOUS AND HAZARDOUS SUBSTANCE which should be handled by trained staff only.
Handling Advice:	Avoid repeated freeze-thaw cycles.
Storage:	-20 °C
Storage Comment:	For short term use, store at 2-8°C up to 1 week. For long term storage, store at -20°C in small aliquots to prevent freeze-thaw cycles.



Immunohistochemistry

Image 1. Human Lung



Western Blotting

Image 2. WB Suggested Anti-PRDM14 Antibody Titration: 1.25ug/ml ELISA Titer: 1:312500 Positive Control: Jurkat cell lysate