



[Go to Product page](#)

Datasheet for ABIN2777844  
**anti-TUT1 antibody (N-Term)**

1 Image

Overview

Quantity:	100 µL
Target:	TUT1
Binding Specificity:	N-Term
Reactivity:	Human, Mouse, Dog, Cow, Guinea Pig, Horse, Rabbit
Host:	Rabbit
Clonality:	Polyclonal
Conjugate:	This TUT1 antibody is un-conjugated
Application:	Western Blotting (WB)

Product Details

Immunogen:	The immunogen is a synthetic peptide directed towards the N terminal region of human TUT1
Sequence:	CDLDFLDLG DLEEQPVPK APESPSLDSA LASPLDPQAL ACTPASPPDS
Predicted Reactivity:	Cow: 100%, Dog: 100%, Guinea Pig: 100%, Horse: 100%, Human: 100%, Mouse: 79%, Rabbit: 93%
Characteristics:	This is a rabbit polyclonal antibody against TUT1. It was validated on Western Blot using a cell lysate as a positive control.
Purification:	Affinity Purified

Target Details

Target:	TUT1
Alternative Name:	TUT1 ( <a href="#">TUT1 Products</a> )

## Target Details

---

**Background:** TUT1 is a nucleotidyl transferase that functions as both a terminal uridylyltransferase and a nuclear poly(A) polymerase. TUT1 specifically adds and removes nucleotides from the 3' end of small nuclear RNAs and select mRNAs and may function in controlling gene expression and cell proliferation. TUT1 specifically catalyzes uridylylation of U6 snRNA (RNU6, MIM 180692) and is essential for cell proliferation (Trippe et al., 2006 [PubMed 16790842]). [supplied by OMIM].  
Alias Symbols: FLJ21850, FLJ22267, FLJ22347, MGC131987, MGC149809, PAPD2, RBM21, TUTase, STARPAP  
Protein Interaction Partner: HUWE1, IL32, SUMO2, TIMELESS, PIN1, FBXO6, SOX2, CPSF3, CPSF1, HMOX1, UBC, YWHAQ, MEPCE, USP15, SART3, PRPF4, USP4,  
Protein Size: 874

---

**Molecular Weight:** 94 kDa

---

**Gene ID:** 64852

---

**NCBI Accession:** [NM\\_022830](#), [NP\\_073741](#)

---

**UniProt:** [A8K995](#)

## Application Details

---

**Application Notes:** Optimal working dilutions should be determined experimentally by the investigator.

---

**Comment:** Antigen size: 874 AA

---

**Restrictions:** For Research Use only

## Handling

---

**Format:** Liquid

---

**Concentration:** Lot specific

---

**Buffer:** Liquid. Purified antibody supplied in 1x PBS buffer with 0.09 % (w/v) sodium azide and 2 % sucrose.

---

**Preservative:** Sodium azide

---

**Precaution of Use:** This product contains Sodium azide: a POISONOUS AND HAZARDOUS SUBSTANCE which should be handled by trained staff only.

---

**Handling Advice:** Avoid repeated freeze-thaw cycles.

---

**Storage:** -20 °C

---

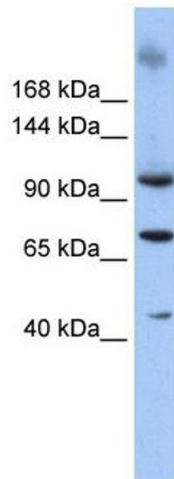
## Handling

---

Storage Comment: For short term use, store at 2-8°C up to 1 week. For long term storage, store at -20°C in small aliquots to prevent freeze-thaw cycles.

## Images

---



### Western Blotting

**Image 1.** WB Suggested Anti-TUT1 Antibody Titration: 0.2-1 ug/ml ELISA Titer: 1:1562500 Positive Control: 293T cell lysate