

Datasheet for ABIN2777845
anti-BCL11B antibody (Middle Region)[Go to Product page](#)

2 Images

Overview

Quantity:	100 µL
Target:	BCL11B
Binding Specificity:	Middle Region
Reactivity:	Human, Mouse, Rat, Cow, Dog, Rabbit, Guinea Pig, Horse
Host:	Rabbit
Clonality:	Polyclonal
Conjugate:	This BCL11B antibody is un-conjugated
Application:	Western Blotting (WB), Immunohistochemistry (IHC)

Product Details

Immunogen:	The immunogen is a synthetic peptide directed towards the middle region of human BCL11B
Sequence:	QASKLKRHMK THMHKAGSLA GRSDDGLSAA SSPEPGTSEL AGEGLKAADG
Predicted Reactivity:	Cow: 100%, Dog: 100%, Guinea Pig: 100%, Horse: 100%, Human: 100%, Mouse: 100%, Rabbit: 100%, Rat: 100%
Characteristics:	This is a rabbit polyclonal antibody against BCL11B. It was validated on Western Blot using a cell lysate as a positive control.
Purification:	Affinity Purified

Target Details

Target:	BCL11B
---------	--------

Target Details

Alternative Name:	BCL11B (BCL11B Products)
Background:	<p>BCL11B is the tumor-suppressor protein involved in T-cell lymphomas. BCL11B may function on the P53-signaling pathway. BCL11B may be a key regulator of both differentiation and survival during thymocyte development. BCL11B repress transcription through direct, TFCOUP2-independent binding to a GC-rich response element. This gene encodes a C2H2-type zinc finger protein and is closely related to BCL11A, a gene whose translocation may be associated with B-cell malignancies. The specific function of this gene has not yet been determined. Two alternatively spliced transcript variants, which encode distinct isoforms, have been reported.</p> <p>Alias Symbols: CTIP-2, CTIP2, RIT1, hRIT1-alpha, ZNF856B</p> <p>Protein Interaction Partner: HDAC6, HDAC2, HDAC1, NOTCH1, UBC, HDAC3, SUV39H1, tat, CBX5, NR2F1, SP1, MBD3, MTA2, MTA1, RBBP7, RBBP4, CHD4, NR2F2,</p> <p>Protein Size: 823</p>
Molecular Weight:	88 kDa
Gene ID:	64919
NCBI Accession:	NM_022898 , NP_075049

Application Details

Application Notes:	Optimal working dilutions should be determined experimentally by the investigator.
Comment:	Antigen size: 823 AA
Restrictions:	For Research Use only

Handling

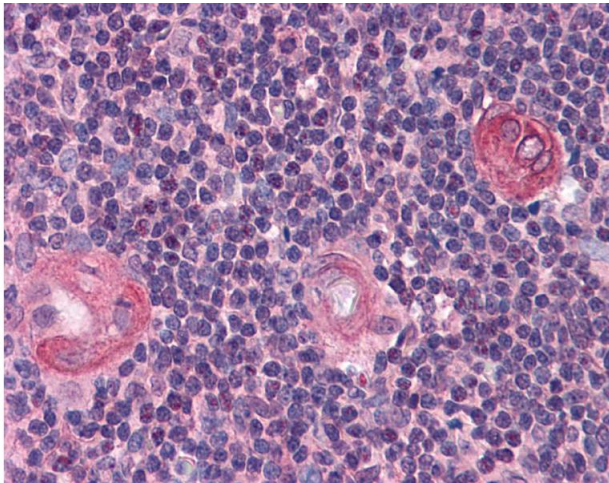
Format:	Liquid
Concentration:	Lot specific
Buffer:	Liquid. Purified antibody supplied in 1x PBS buffer with 0.09 % (w/v) sodium azide and 2 % sucrose.
Preservative:	Sodium azide
Precaution of Use:	This product contains Sodium azide: a POISONOUS AND HAZARDOUS SUBSTANCE which should be handled by trained staff only.
Handling Advice:	Avoid repeated freeze-thaw cycles.

Handling

Storage: -20 °C

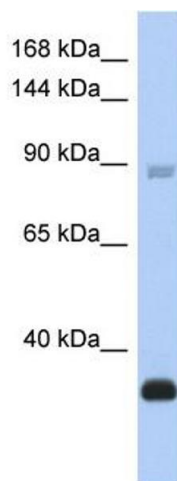
Storage Comment: For short term use, store at 2-8°C up to 1 week. For long term storage, store at -20°C in small aliquots to prevent freeze-thaw cycles.

Images



Immunohistochemistry

Image 1.



Western Blotting

Image 2. WB Suggested Anti-BCL11B Antibody Titration: 0.2-1 ug/ml ELISA Titer: 1:12500 Positive Control: THP-1 cell lysate