

Datasheet for ABIN2777847
anti-SIM1 antibody (Middle Region)



[Go to Product page](#)

1 Image

Overview

Quantity:	100 µL
Target:	SIM1
Binding Specificity:	Middle Region
Reactivity:	Human, Cow, Mouse, Rat, Dog, Horse, Rabbit, Guinea Pig, Pig
Host:	Rabbit
Clonality:	Polyclonal
Conjugate:	This SIM1 antibody is un-conjugated
Application:	Immunohistochemistry (IHC)

Product Details

Immunogen:	The immunogen is a synthetic peptide directed towards the middle region of Human SIM1
Sequence:	SSSKSKSRTS PYPQYSGFHT ERSSESDHDSQ WGGSPLTDTA SPQLLDPADR
Predicted Reactivity:	Cow: 93%, Dog: 100%, Guinea Pig: 93%, Horse: 100%, Human: 100%, Mouse: 100%, Pig: 100%, Rabbit: 100%, Rat: 100%
Characteristics:	This is a rabbit polyclonal antibody against SIM1. It was validated on Western Blot.
Purification:	Affinity Purified

Target Details

Target:	SIM1
Alternative Name:	SIM1 (SIM1 Products)

Target Details

Background:	<p>SIM1 and SIM2 genes are Drosophila single-minded (sim) gene homologs. SIM1 transcript was detected only in fetal kidney out of various adult and fetal tissues tested. Since the sim gene plays an important role in Drosophila development and has peak levels of expression during the period of neurogenesis, it was proposed that the human SIM gene is a candidate for involvement in certain dysmorphic features (particularly the facial and skull characteristics), abnormalities of brain development, and/or mental retardation of Down syndrome.</p> <p>Alias Symbols: bHLHe14</p> <p>Protein Interaction Partner: ARNT, HSP90AA1,</p> <p>Protein Size: 766</p>
Molecular Weight:	85 kDa
Gene ID:	6492
NCBI Accession:	NM_005068 , NP_005059
UniProt:	P81133

Application Details

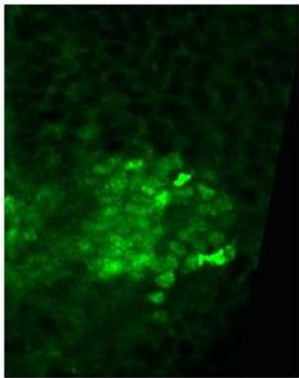
Application Notes:	Optimal working dilutions should be determined experimentally by the investigator.
Comment:	Antigen size: 766 AA
Restrictions:	For Research Use only

Handling

Format:	Liquid
Concentration:	Lot specific
Buffer:	Liquid. Purified antibody supplied in 1x PBS buffer with 0.09 % (w/v) sodium azide and 2 % sucrose.
Preservative:	Sodium azide
Precaution of Use:	This product contains Sodium azide: a POISONOUS AND HAZARDOUS SUBSTANCE which should be handled by trained staff only.
Handling Advice:	Avoid repeated freeze-thaw cycles.
Storage:	-20 °C
Storage Comment:	For short term use, store at 2-8°C up to 1 week. For long term storage, store at -20°C in small

aliquots to prevent freeze-thaw cycles.

SIM1



See Immunohistochemistry 1 Data and Customer Feedback tab for more information.

Immunohistochemistry

Image 1. Mouse embryonic spinal cord- embryonic day 15