



Datasheet for ABIN2777848

anti-MRPS15 antibody (N-Term)



[Go to Product page](#)

3 Images

1 Publication

Overview

Quantity:	100 µL
Target:	MRPS15
Binding Specificity:	N-Term
Reactivity:	Human, Mouse, Rat, Cow, Guinea Pig, Rabbit, Horse, Dog
Host:	Rabbit
Clonality:	Polyclonal
Conjugate:	This MRPS15 antibody is un-conjugated
Application:	Western Blotting (WB), Immunohistochemistry (IHC)

Product Details

Immunogen:	The immunogen is a synthetic peptide directed towards the N terminal region of human MRPS15
Sequence:	RGYVVRKPAQ SRLDDPPPS TLLKDYQNP GIEKVDDVVK RLLSLEMANK
Predicted Reactivity:	Cow: 100%, Dog: 92%, Guinea Pig: 100%, Horse: 93%, Human: 100%, Mouse: 83%, Rabbit: 86%, Rat: 92%
Characteristics:	This is a rabbit polyclonal antibody against MRPS15. It was validated on Western Blot and immunohistochemistry.
Purification:	Affinity Purified

Target Details

Target:	MRPS15
---------	--------

Target Details

Alternative Name: [MRPS15 \(MRPS15 Products\)](#)

Background: Mammalian mitochondrial ribosomal proteins are encoded by nuclear genes and help in protein synthesis within the mitochondrion. Mitochondrial ribosomes (mitoribosomes) consist of a small 28S subunit and a large 39S subunit. MRPS15 is a 28S subunit protein that belongs to the ribosomal protein S15P family. Mammalian mitochondrial ribosomal proteins are encoded by nuclear genes and help in protein synthesis within the mitochondrion. Mitochondrial ribosomes (mitoribosomes) consist of a small 28S subunit and a large 39S subunit. They have an estimated 75 % protein to rRNA composition compared to prokaryotic ribosomes, where this ratio is reversed. Another difference between mammalian mitoribosomes and prokaryotic ribosomes is that the latter contain a 5S rRNA. Among different species, the proteins comprising the mitoribosome differ greatly in sequence, and sometimes in biochemical properties, which prevents easy recognition by sequence homology. This gene encodes a 28S subunit protein that belongs to the ribosomal protein S15P family. The encoded protein is more than two times the size of its E. coli counterpart, with the 12S rRNA binding sites conserved. Between human and mouse, the encoded protein is the least conserved among small subunit ribosomal proteins. Pseudogenes corresponding to this gene are found on chromosomes 15q and 19q.

Alias Symbols: DC37, FLJ11564, MPR-S15, RPMS15, S15mt

Protein Interaction Partner: GRSF1, UBC, PARK2, ESR2, PTCD3, CAND1, COPS5, CUL3, SUMO2, ICT1,

Protein Size: 257

Molecular Weight: 30 kDa

Gene ID: 64960

NCBI Accession: [NM_031280](#), [NP_112570](#)

UniProt: [P82914](#)

Application Details

Application Notes: Optimal working dilutions should be determined experimentally by the investigator.

Comment: Antigen size: 257 AA

Restrictions: For Research Use only

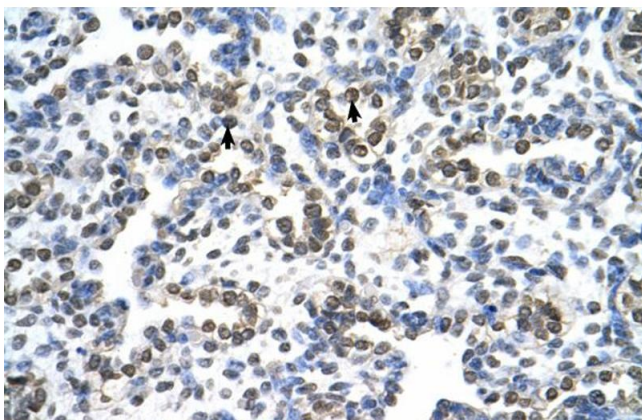
Handling

Format:	Liquid
Concentration:	Lot specific
Buffer:	Liquid. Purified antibody supplied in 1x PBS buffer with 0.09 % (w/v) sodium azide and 2 % sucrose.
Preservative:	Sodium azide
Precaution of Use:	This product contains Sodium azide: a POISONOUS AND HAZARDOUS SUBSTANCE which should be handled by trained staff only.
Handling Advice:	Avoid repeated freeze-thaw cycles.
Storage:	-20 °C
Storage Comment:	For short term use, store at 2-8°C up to 1 week. For long term storage, store at -20°C in small aliquots to prevent freeze-thaw cycles.

Publications

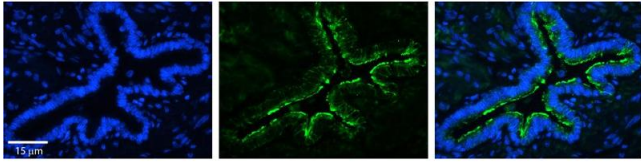
Product cited in:	Lazrek, Goffard, Schanen, Karquel, Bocket, Lion, Devaux, Hedouin, Gosset, Hober: "Detection of hepatitis C virus antibodies and RNA among medicolegal autopsy cases in Northern France." in: Diagnostic microbiology and infectious disease , Vol. 55, Issue 1, pp. 55-8, (2006) (PubMed).
-------------------	---------------------------------------------------------------------------------------------------------------------------------------------------------------------------------------------------------------------------------------------------------------------------------------------------------------------

Images



Immunohistochemistry

Image 1. Human Lung



Immunohistochemistry

Image 2. Rabbit Anti-MRPS15 Antibody Catalog Number: ARP33299_P050 Formalin Fixed Paraffin Embedded Tissue: Human Bronchial Epithelial Tissue Observed Staining: Plasma Membrane Primary Antibody Concentration: 1:100 Secondary Antibody: Donkey anti-Rabbit-Cy3 Secondary Antibody Concentration: 1:200 Magnification: 20X Exposure Time: 0.5 - 2.0 sec



Western Blotting

Image 3. WB Suggested Anti-MRPS15 Antibody Titration: 0.2-1 ug/ml ELISA Titer: 1:12500 Positive Control: 721_B cell lysate MRPS15 is supported by BioGPS gene expression data to be expressed in 721_B