

Datasheet for ABIN2777851
anti-SLUG antibody (Middle Region)[Go to Product page](#)

4 Images

Overview

Quantity:	100 µL
Target:	SLUG (SNAI2)
Binding Specificity:	Middle Region
Reactivity:	Human, Mouse, Rat, Cow, Sheep, Rabbit, Dog, Horse, Guinea Pig, Saccharomyces cerevisiae
Host:	Rabbit
Clonality:	Polyclonal
Conjugate:	This SLUG antibody is un-conjugated
Application:	Western Blotting (WB), Immunohistochemistry (IHC)

Product Details

Immunogen:	The immunogen is a synthetic peptide directed towards the middle region of human SNAI2
Sequence:	SDTSSKDHSG SESPISEEEE RLQSKLSDPH AIEAEKFQCN LCNKTYSTFS
Predicted Reactivity:	Cow: 100%, Dog: 100%, Guinea Pig: 100%, Horse: 100%, Human: 100%, Mouse: 93%, Rabbit: 100%, Rat: 100%, Sheep: 100%, Yeast: 79%
Characteristics:	This is a rabbit polyclonal antibody against SNAI2. It was validated on Western Blot and immunohistochemistry.
Purification:	Affinity Purified

Target Details

Target:	SLUG (SNAI2)
---------	--------------

Target Details

Alternative Name: SNAI2 ([SNAI2 Products](#))

Background: SNAI2 is a member of the Snail family of C2H2-type zinc finger transcription factors. The protein acts as a transcriptional repressor that binds to E-box motifs and is also likely to repress E-cadherin transcription in breast carcinoma. This protein is involved in epithelial-mesenchymal transitions and has antiapoptotic activity. Mutations in this gene may be associated with sporadic cases of neural tube defects. This gene encodes a member of the Snail family of C2H2-type zinc finger transcription factors. The encoded protein acts as a transcriptional repressor that binds to E-box motifs and is also likely to repress E-cadherin transcription in breast carcinoma. This protein is involved in epithelial-mesenchymal transitions and has antiapoptotic activity. Mutations in this gene may be associated with sporadic cases of neural tube defects. Publication Note: This RefSeq record includes a subset of the publications that are available for this gene. Please see the Entrez Gene record to access additional publications.

Alias Symbols: MGC10182, SLUG, SLUGH1, WS2D, SNAIL2

Protein Interaction Partner: SAT1, TRIM23, PPP2R2D, PPP6R3, STUB1, TJP2, UBC, TP53, PSMD3, PSMD1, PSMC1, PSMA3, PPP2CB, GSK3B, MDM2, APP, KDM1A, HDAC1, CHD4, Sin3a, HDAC2,

Protein Size: 268

Molecular Weight: 30 kDa

Gene ID: 6591

NCBI Accession: [NM_003068](#), [NP_003059](#)

UniProt: [O43623](#)

Application Details

Application Notes: Optimal working dilutions should be determined experimentally by the investigator.

Comment: Antigen size: 268 AA

Restrictions: For Research Use only

Handling

Format: Liquid

Concentration: Lot specific

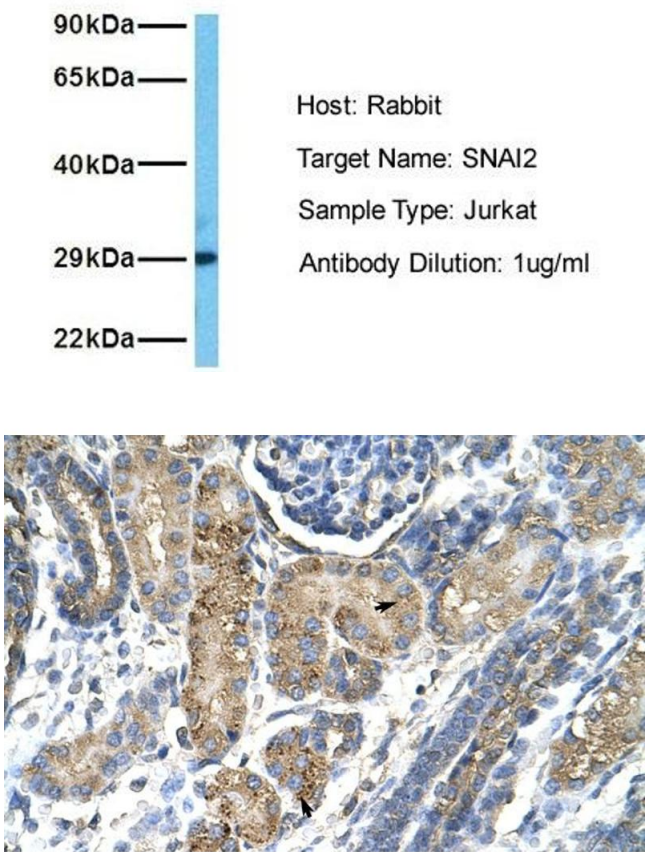
Buffer: Liquid. Purified antibody supplied in 1x PBS buffer with 0.09 % (w/v) sodium azide and 2 %

Handling

	sucrose.
Preservative:	Sodium azide
Precaution of Use:	This product contains Sodium azide: a POISONOUS AND HAZARDOUS SUBSTANCE which should be handled by trained staff only.
Handling Advice:	Avoid repeated freeze-thaw cycles.
Storage:	-20 °C
Storage Comment:	For short term use, store at 2-8°C up to 1 week. For long term storage, store at -20°C in small aliquots to prevent freeze-thaw cycles.

Images

SNAI2

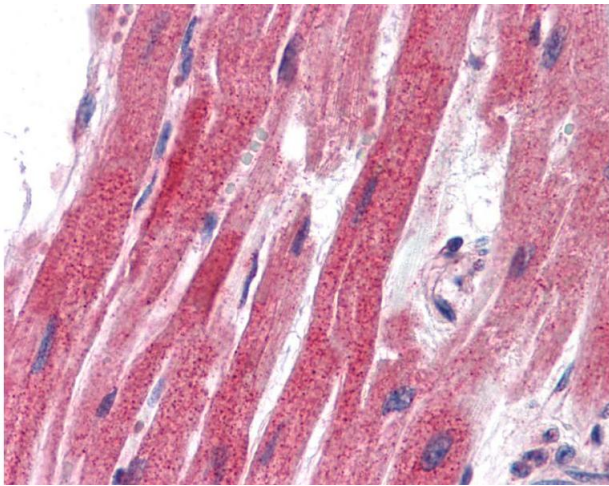


Western Blotting

Image 1. Host: Rabbit Target Name: SNAI2 Sample Tissue: Human Jurkat Antibody Dilution: 1.0ug/ml

Immunohistochemistry

Image 2. Human kidney



Immunohistochemistry

Image 3. Testis

Please check the [product details page](#) for more images. Overall 4 images are available for ABIN2777851.