

Datasheet for ABIN2777857
anti-SMARCE1 antibody (N-Term)

3 Images

[Go to Product page](#)

Overview

Quantity:	100 µL
Target:	SMARCE1
Binding Specificity:	N-Term
Reactivity:	Human, Mouse, Rat, Rabbit, Dog, Horse, Cow, Guinea Pig, Pig
Host:	Rabbit
Clonality:	Polyclonal
Conjugate:	This SMARCE1 antibody is un-conjugated
Application:	Western Blotting (WB)

Product Details

Immunogen:	The immunogen is a synthetic peptide directed towards the N terminal region of human SMARCE1
Sequence:	EEREKEAAEQ AERSQSSIVP EEEQAANKGE EKKDDENIPM ETEETHLEET
Predicted Reactivity:	Cow: 100%, Dog: 100%, Guinea Pig: 77%, Horse: 92%, Human: 100%, Mouse: 100%, Pig: 100%, Rabbit: 85%, Rat: 93%
Characteristics:	This is a rabbit polyclonal antibody against SMARCE1. It was validated on Western Blot using a cell lysate as a positive control.
Purification:	Affinity Purified

Target Details

Target:	SMARCE1
---------	---------

Target Details

Alternative Name: SMARCE1 ([SMARCE1 Products](#))

Background: SMARCE1 is part of the large ATP-dependent chromatin remodeling complex SWI/SNF, which is required for transcriptional activation of genes normally repressed by chromatin. The protein, either alone or when in the SWI/SNF complex, can bind to 4-way junction DNA, which is thought to mimic the topology of DNA as it enters or exits the nucleosome. The protein contains a DNA-binding HMG domain, but disruption of this domain does not abolish the DNA-binding or nucleosome-displacement activities of the SWI/SNF complex. Unlike most of the SWI/SNF complex proteins, this protein has no yeast counterpart. The protein encoded by this gene is part of the large ATP-dependent chromatin remodeling complex SWI/SNF, which is required for transcriptional activation of genes normally repressed by chromatin. The encoded protein, either alone or when in the SWI/SNF complex, can bind to 4-way junction DNA, which is thought to mimic the topology of DNA as it enters or exits the nucleosome. The protein contains a DNA-binding HMG domain, but disruption of this domain does not abolish the DNA-binding or nucleosome-displacement activities of the SWI/SNF complex. Unlike most of the SWI/SNF complex proteins, this protein has no yeast counterpart. Publication Note: This RefSeq record includes a subset of the publications that are available for this gene. Please see the Entrez Gene record to access additional publications. PRIMARYREFSEQ_SPAN PRIMARY_IDENTIFIER PRIMARY_SPAN COMP 1-72 BQ707908.1 667-738 73-2415 AK095047.1 40-2382 2416-2425 BC063700.1 2379-2388

Alias Symbols: BAF57

Protein Interaction Partner: NOTCH2NL, KRTAP10-9, CCDC172, NBPF22P, TXLNA, MIPOL1, KRT40, MRFAP1L1, SYCE1, ING5, USHBP1, CEP70, CEP63, CCDC136, RINT1, TRIM54, AMOTL2, MED4, TFIP11, NUP62, MTUS2, EXOC7, RALBP1, SPAG5, JAKMIP2, TRIP10, STX11, CEP170P1, MEOX2, KRT31, KRT15, KIFC3, GOLGA

Protein Size: 411

Molecular Weight: 47 kDa

Gene ID: 6605

NCBI Accession: [NM_003079](#), [NP_003070](#)

UniProt: [Q969G3](#)

Pathways: [Chromatin Binding](#)

Application Details

Application Notes: Optimal working dilutions should be determined experimentally by the investigator.

Application Details

Comment: Antigen size: 411 AA

Restrictions: For Research Use only

Handling

Format: Liquid

Concentration: Lot specific

Buffer: Liquid. Purified antibody supplied in 1x PBS buffer with 0.09 % (w/v) sodium azide and 2 % sucrose.

Preservative: Sodium azide

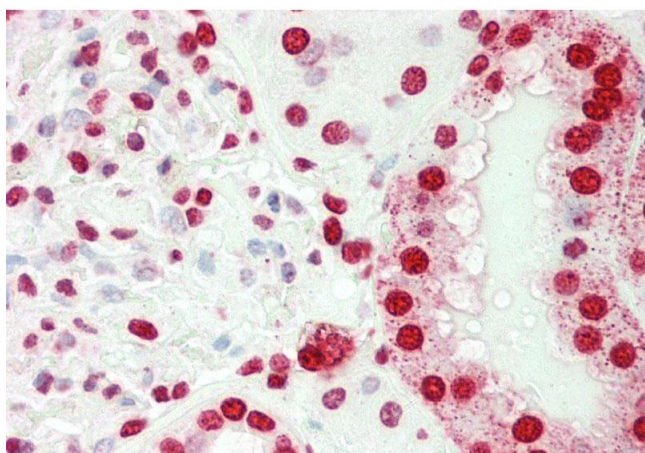
Precaution of Use: This product contains Sodium azide: a POISONOUS AND HAZARDOUS SUBSTANCE which should be handled by trained staff only.

Handling Advice: Avoid repeated freeze-thaw cycles.

Storage: -20 °C

Storage Comment: For short term use, store at 2-8°C up to 1 week. For long term storage, store at -20°C in small aliquots to prevent freeze-thaw cycles.

Images



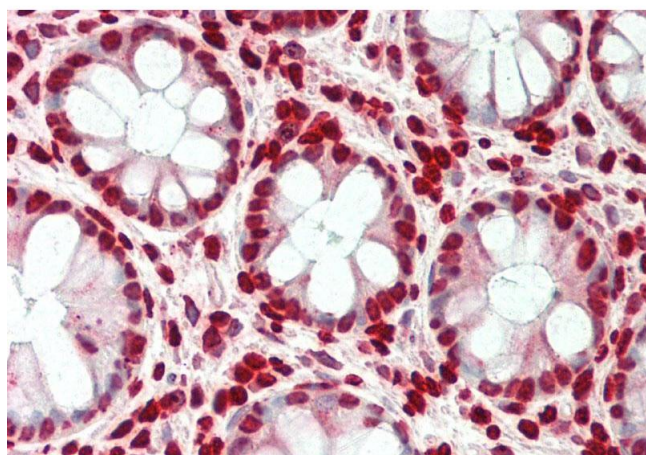
Immunohistochemistry

Image 1. Rabbit Anti-SMARCE1 antibody Catalog Number: ARP33313 Formalin Fixed Paraffin Embedded Tissue: Human Kidney Primary antibody Concentration: 1:100 Secondary Antibody: Donkey anti-Rabbit-Cy3 Secondary Antibody Concentration: 1:200 Magnification: 20x Exposure Time: 0.5-2.0sec



Western Blotting

Image 2. WB Suggested Anti-SMARCE1 Antibody Titration:
0.2-1 ug/ml ELISA Titer: 1:62500 Positive Control:
Transfected 293T



Immunohistochemistry

Image 3. Rabbit Anti-SMARCE1 antibody Catalog Number:
ARP33313 Formalin Fixed Paraffin Embedded Tissue:
Human Colon Primary antibody Concentration: 1:100
Secondary Antibody: Donkey anti-Rabbit-Cy3 Secondary
Antibody Concentration: 1:200 Magnification: 20x Exposure
Time: 0.5-2.0sec