

Datasheet for ABIN2777875 anti-EPC1 antibody (Middle Region)



[Go to Product page](#)

1 Image

Overview

Quantity:	100 µL
Target:	EPC1
Binding Specificity:	Middle Region
Reactivity:	Human, Mouse, Cow, Dog, Horse, Rabbit, Rat, Guinea Pig, Pig
Host:	Rabbit
Clonality:	Polyclonal
Conjugate:	This EPC1 antibody is un-conjugated
Application:	Western Blotting (WB)

Product Details

Immunogen:	The immunogen is a synthetic peptide directed towards the middle region of human EPC1
Sequence:	VNKQDKADLI RPKRKYEKKP KVLPSAAAT PQQTSPAALP VFNAKDLNQY
Predicted Reactivity:	Cow: 100%, Dog: 100%, Guinea Pig: 86%, Horse: 100%, Human: 100%, Mouse: 100%, Pig: 100%, Rabbit: 100%, Rat: 100%
Characteristics:	This is a rabbit polyclonal antibody against EPC1. It was validated on Western Blot using a cell lysate as a positive control.
Purification:	Affinity Purified

Target Details

Target:	EPC1
---------	------

Target Details

Alternative Name:	EPC1 (EPC1 Products)
Background:	<p>EPC1 is a component of the NuA4 histone acetyltransferase (HAT) complex which is involved in transcriptional activation of select genes principally by acetylation of nucleosomal histones H4 and H2A. This modification may both alter nucleosome - DNA interactions and promote interaction of the modified histones with other proteins which positively regulate transcription. This complex may be required for the activation of transcriptional programs associated with oncogene and proto-oncogene mediated growth induction, tumor suppressor mediated growth arrest and replicative senescence, apoptosis, and DNA repair. NuA4 may also play a direct role in DNA repair when directly recruited to sites of DNA damage.</p> <p>Alias Symbols: DKFZp781P2312, Epl1</p> <p>Protein Interaction Partner: RINT1, KRT15, Hopx, TRIM27, H2AFZ, DMAP1, ING3, MORF4L1, KAT5, MYC, MORF4L2, MRGBP, EED, EZH2, E2F6, SRF,</p> <p>Protein Size: 836</p>
Molecular Weight:	93 kDa
Gene ID:	80314
NCBI Accession:	NM_025209 , NP_079485
UniProt:	Q9H2F5
Pathways:	Regulation of Muscle Cell Differentiation

Application Details

Application Notes:	Optimal working dilutions should be determined experimentally by the investigator.
Comment:	Antigen size: 836 AA
Restrictions:	For Research Use only

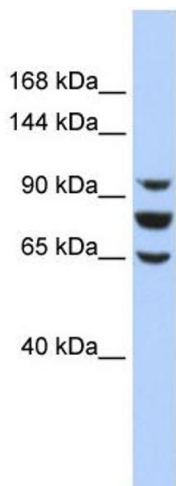
Handling

Format:	Liquid
Concentration:	Lot specific
Buffer:	Liquid. Purified antibody supplied in 1x PBS buffer with 0.09 % (w/v) sodium azide and 2 % sucrose.
Preservative:	Sodium azide
Precaution of Use:	This product contains Sodium azide: a POISONOUS AND HAZARDOUS SUBSTANCE which

Handling

	should be handled by trained staff only.
Handling Advice:	Avoid repeated freeze-thaw cycles.
Storage:	-20 °C
Storage Comment:	For short term use, store at 2-8°C up to 1 week. For long term storage, store at -20°C in small aliquots to prevent freeze-thaw cycles.

Images



Western Blotting

Image 1. WB Suggested Anti-EPC1 Antibody Titration: 0.2-1 ug/ml ELISA Titer: 1:312500 Positive Control: HepG2 cell lysate