



[Go to Product page](#)

Datasheet for ABIN2777881
anti-BAF53A antibody (N-Term)

2 Images

Overview

Quantity:	100 µL
Target:	BAF53A
Binding Specificity:	N-Term
Reactivity:	Human, Mouse, Rat, Cow, Dog, Horse, Rabbit, Guinea Pig
Host:	Rabbit
Clonality:	Polyclonal
Conjugate:	This BAF53A antibody is un-conjugated
Application:	Western Blotting (WB)

Product Details

Immunogen:	The immunogen is a synthetic peptide directed towards the N terminal region of human ACTL6A
Sequence:	VDFPTAIGMV VERDDGSTLM EIDGDKGKQG GPTYIIDTNA LRVPRENMEA
Predicted Reactivity:	Cow: 100%, Dog: 100%, Guinea Pig: 100%, Horse: 100%, Human: 100%, Mouse: 100%, Rabbit: 100%, Rat: 100%
Characteristics:	This is a rabbit polyclonal antibody against ACTL6A. It was validated on Western Blot using a cell lysate as a positive control.
Purification:	Affinity Purified

Target Details

Target:	BAF53A
---------	--------

Target Details

Alternative Name: [ACTL6A \(BAF53A Products\)](#)

Background: This gene encodes a family member of actin-related proteins (ARPs), which share significant amino acid sequence identity to conventional actins. Both actins and ARPs have an actin fold, which is an ATP-binding cleft, as a common feature. The ARPs are involved in diverse cellular processes, including vesicular transport, spindle orientation, nuclear migration and chromatin remodeling. This gene encodes a 53 kDa subunit protein of the BAF (BRG1/brm-associated factor) complex in mammals, which is functionally related to SWI/SNF complex in *S. cerevisiae* and *Drosophila*, the latter is thought to facilitate transcriptional activation of specific genes by antagonizing chromatin-mediated transcriptional repression. Together with beta-actin, it is required for maximal ATPase activity of BRG1, and for the association of the BAF complex with chromatin/matrix. Three transcript variants that encode two different protein isoforms have been described.

Alias Symbols: ACTL6, BAF53A, MGC5382, Arp4, INO80K, ARPN-BETA

Protein Interaction Partner: UBC, BMI1, HECW2, FBXO6, HDAC2, CBX5, UCHL5, ARID1B, RUVBL1, TRRAP, ARID1A, SMARCE1, SMARCC2, SMARCC1, SMARCA4, SMARCA2, UBD, GRB2, INO80E, CAND1, CUL3, CDK9, CDK2, H2AFZ, TP53, UL27, SMARCD1, HDGF, SOX2, SMARCAD1, KAT5, PBRM1, Bcl7b, INO80C, ACTR8, INO80

Protein Size: 429

Molecular Weight: 47 kDa

Gene ID: 86

NCBI Accession: [NM_004301](#), [NP_004292](#)

UniProt: [O96019](#)

Pathways: [Chromatin Binding](#), [Photoperiodism](#)

Application Details

Application Notes: Optimal working dilutions should be determined experimentally by the investigator.

Comment: Antigen size: 429 AA

Restrictions: For Research Use only

Handling

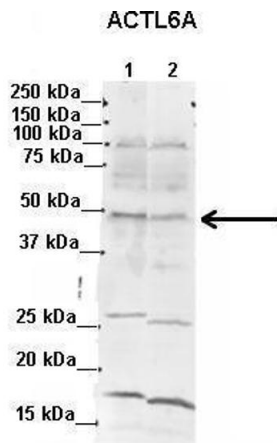
Format: Liquid

Concentration: Lot specific

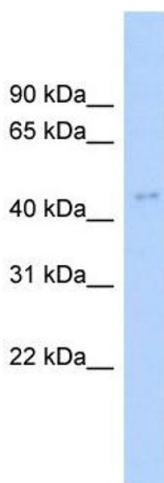
Handling

Buffer:	Liquid. Purified antibody supplied in 1x PBS buffer with 0.09 % (w/v) sodium azide and 2 % sucrose.
Preservative:	Sodium azide
Precaution of Use:	This product contains Sodium azide: a POISONOUS AND HAZARDOUS SUBSTANCE which should be handled by trained staff only.
Handling Advice:	Avoid repeated freeze-thaw cycles.
Storage:	-20 °C
Storage Comment:	For short term use, store at 2-8°C up to 1 week. For long term storage, store at -20°C in small aliquots to prevent freeze-thaw cycles.

Images



See Immunoblot 2 Data and Customer Feedback for more information



Western Blotting

Image 1. Lanes: 1. Mouse WT brain extract (80ug) 2. Rat brain extract (80ug) Primary Antibody Dilution: 2ug/ml Secondary Antibody: IRDye 800CW goat anti-rabbit from LICOR Bioscience Secondary Antibody Dilution: 1: 20,000 Gene Name: ACTL6A Submitted by: Dr. Yuzhi Chen, University of Arkansas for Medical Science

Western Blotting

Image 2. WB Suggested Anti-ACTL6A Antibody Titration: 0.2-1 ug/ml ELISA Titer: 1:62500 Positive Control: Transfected 293T