

Datasheet for ABIN2777882  
**anti-MRGBP antibody (N-Term)**



[Go to Product page](#)

1 Image

## Overview

Quantity:	100 µL
Target:	MRGBP
Binding Specificity:	N-Term
Reactivity:	Human, Mouse, Guinea Pig, Rat
Host:	Rabbit
Clonality:	Polyclonal
Conjugate:	This MRGBP antibody is un-conjugated
Application:	Western Blotting (WB)

## Product Details

Immunogen:	The immunogen is a synthetic peptide directed towards the N terminal region of human C20ORF20
Sequence:	MGEAEVGGGG AAGDKGPGEA ATSPAEEVV WSPEVEVCLF HAMLGHKPVG
Predicted Reactivity:	Guinea Pig: 93%, Human: 100%, Mouse: 86%, Rat: 86%
Characteristics:	This is a rabbit polyclonal antibody against C20ORF20. It was validated on Western Blot using a cell lysate as a positive control.
Purification:	Protein A purified

## Target Details

Target:	MRGBP
---------	-------

## Target Details

Alternative Name:	C20ORF20 ( <a href="#">MRGBP Products</a> )
Background:	<p>C20orf20 is a component of the NuA4 histone acetyltransferase (HAT) complex which is involved in transcriptional activation of select genes principally by acetylation of nucleosomal histone H4 and H2A. This complex may be required for the activation of transcriptional programs associated with oncogene and proto-oncogene mediated growth induction, tumor suppressor mediated growth arrest and replicative senescence, apoptosis, and DNA repair.</p> <p>Alias Symbols: Eaf7, MRGBP, URCC4, MRG15BP, C20ORF20</p> <p>Protein Interaction Partner: MORF4L1, MORF4L2, NOTCH2NL, KRTAP10-7, H2AFZ, ELAVL1, SH3BP4, VAV2, UBC, H2AFV, MRFAP1, EPC1, DMAP1, MRGBP, MBTD1, EPC2, SIN3B, BRD8, RUVBL2, SRCAP, KAT5, RUVBL1, HIST2H2BE, TUBA1A, TUBB2A, RBBP7, HNRNPM, LMNA, KPNA2, KPNB1, HSPA4, HNRNPU, HNRNPK, ACTL6A,</p> <p>Protein Size: 204</p>
Molecular Weight:	22 kDa
Gene ID:	55257
NCBI Accession:	<a href="#">NM_018270</a> , <a href="#">NP_060740</a>
UniProt:	<a href="#">Q9NV56</a>

## Application Details

Application Notes:	Optimal working dilutions should be determined experimentally by the investigator.
Comment:	Antigen size: 204 AA
Restrictions:	For Research Use only

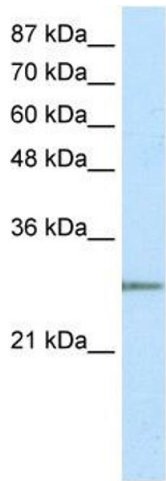
## Handling

Format:	Liquid
Concentration:	Lot specific
Buffer:	Liquid. Purified antibody supplied in 1x PBS buffer with 0.09 % (w/v) sodium azide and 2 % sucrose.
Preservative:	Sodium azide
Precaution of Use:	This product contains Sodium azide: a POISONOUS AND HAZARDOUS SUBSTANCE which should be handled by trained staff only.
Handling Advice:	Avoid repeated freeze-thaw cycles.

Handling

Storage:	-20 °C
Storage Comment:	For short term use, store at 2-8°C up to 1 week. For long term storage, store at -20°C in small aliquots to prevent freeze-thaw cycles.

Images



**Western Blotting**

**Image 1.** WB Suggested Anti-C20ORF20 Antibody Titration: 2.5ug/ml ELISA Titer: 1:62500 Positive Control: Transfected 293T