

Datasheet for ABIN2777899
anti-ZFP36L1 antibody (N-Term)

3 Images

[Go to Product page](#)

Overview

Quantity:	100 µL
Target:	ZFP36L1
Binding Specificity:	N-Term
Reactivity:	Human, Mouse, Rat, Dog, Cow, Guinea Pig
Host:	Rabbit
Clonality:	Polyclonal
Conjugate:	This ZFP36L1 antibody is un-conjugated
Application:	Western Blotting (WB)

Product Details

Immunogen:	The immunogen is a synthetic peptide directed towards the N terminal region of human ZFP36L1
Sequence:	GGGFPRRHSV TLPSSKFHQN QLLSSLKGEP APALSSRDSR FRDRSFSEGG
Predicted Reactivity:	Cow: 100%, Dog: 100%, Guinea Pig: 100%, Human: 100%, Mouse: 100%, Rat: 100%
Characteristics:	This is a rabbit polyclonal antibody against ZFP36L1. It was validated on Western Blot using a cell lysate as a positive control.
Purification:	Affinity Purified

Target Details

Target:	ZFP36L1
---------	---------

Target Details

Alternative Name:	ZFP36L1 (ZFP36L1 Products)
Background:	<p>ZFP36L1 is a member of the TIS11 family of early response genes. Family members are induced by various agonists such as the phorbol ester TPA and the polypeptide mitogen EGF. The gene is well conserved across species and has a promoter that contains motifs seen in other early-response genes. The encoded protein contains a distinguishing putative zinc finger domain with a repeating cys-his motif. This putative nuclear transcription factor most likely functions in regulating the response to growth factors.</p> <p>Alias Symbols: BRF1, ERF1, cMG1, ERF-1, Berg36, TIS11B, RNF162B</p> <p>Protein Interaction Partner: MAPK14, MAPKAPK2, YWHAB, UBC, AKT1, RBM8A, ACD, TINF2, POT1, TERF1, ELAVL1, PAFAH1B2,</p> <p>Protein Size: 338</p>
Molecular Weight:	36 kDa
Gene ID:	677
NCBI Accession:	NM_004926 , NP_004917
UniProt:	Q07352

Application Details

Application Notes:	Optimal working dilutions should be determined experimentally by the investigator.
Comment:	Antigen size: 338 AA
Restrictions:	For Research Use only

Handling

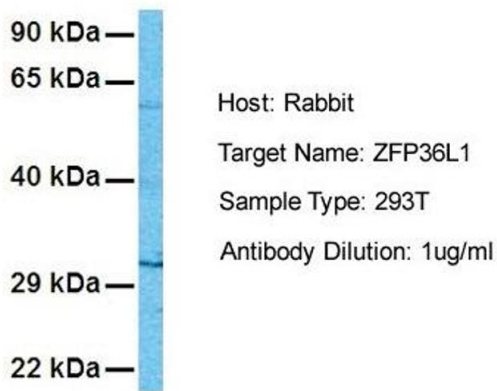
Format:	Liquid
Concentration:	Lot specific
Buffer:	Liquid. Purified antibody supplied in 1x PBS buffer with 0.09 % (w/v) sodium azide and 2 % sucrose.
Preservative:	Sodium azide
Precaution of Use:	This product contains Sodium azide: a POISONOUS AND HAZARDOUS SUBSTANCE which should be handled by trained staff only.
Handling Advice:	Avoid repeated freeze-thaw cycles.

Handling

Storage:	-20 °C
Storage Comment:	For short term use, store at 2-8°C up to 1 week. For long term storage, store at -20°C in small aliquots to prevent freeze-thaw cycles.

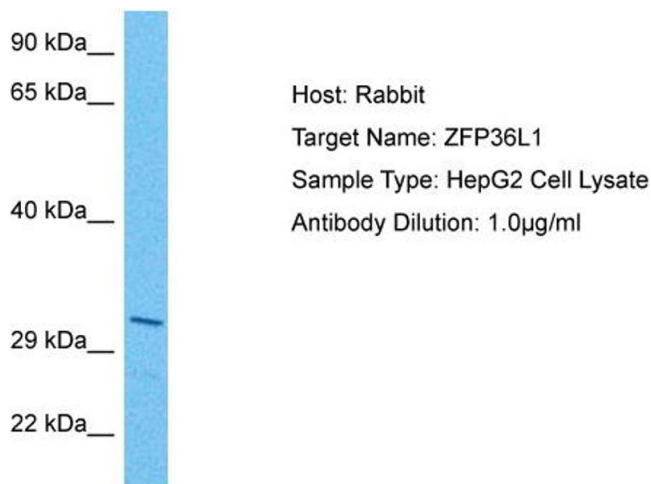
Images

ZFP36L1



Western Blotting

Image 1. Host: Rabbit Target Name: ZFP36L1 Sample Tissue: Human 293T Antibody Dilution: 1.0ug/ml



Western Blotting

Image 2. Host: Rabbit Target Name: ZFP36L1 Sample Tissue: Human HepG2 Whole Cell Antibody Dilution: 1ug/ml



Western Blotting

Image 3. WB Suggested Anti-ZFP36L1 Antibody Titration: 0.2-1 ug/ml ELISA Titer: 1:62500 Positive Control: Jurkat cell lysate There is BioGPS gene expression data showing that ZFP36L1 is expressed in Jurkat