

Datasheet for ABIN2777901
anti-ZFP36L1 antibody (N-Term)



[Go to Product page](#)

2 Images

Overview

Quantity:	100 µL
Target:	ZFP36L1
Binding Specificity:	N-Term
Reactivity:	Human, Mouse, Rat, Dog, Cow, Guinea Pig, Pig
Host:	Rabbit
Clonality:	Polyclonal
Conjugate:	This ZFP36L1 antibody is un-conjugated
Application:	Western Blotting (WB), Immunohistochemistry (IHC)

Product Details

Immunogen:	The immunogen is a synthetic peptide directed towards the N terminal region of human ZFP36L1
Sequence:	QLSSSLKGEP APALSSRDSR FRDRSFSEGG ERLPTQKQP GGGQVNSSRY
Predicted Reactivity:	Cow: 100%, Dog: 100%, Guinea Pig: 92%, Human: 100%, Mouse: 92%, Pig: 100%, Rat: 92%
Characteristics:	This is a rabbit polyclonal antibody against ZFP36L1. It was validated on Western Blot using a cell lysate as a positive control.
Purification:	Affinity Purified

Target Details

Target:	ZFP36L1
---------	---------

Target Details

Alternative Name: ZFP36L1 ([ZFP36L1 Products](#))

Background: ZFP36L1 is a member of the TIS11 family of early response genes. Family members are induced by various agonists such as the phorbol ester TPA and the polypeptide mitogen EGF. The gene is well conserved across species and has a promoter that contains motifs seen in other early-response genes. The encoded protein contains a distinguishing putative zinc finger domain with a repeating cys-his motif. This putative nuclear transcription factor most likely functions in regulating the response to growth factors.

Alias Symbols: BRF1, ERF1, cMG1, ERF-1, Berg36, TIS11B, RNF162B

Protein Interaction Partner: MAPK14, MAPKAPK2, YWHAB, UBC, AKT1, RBM8A, ACD, TINF2, POT1, TERF1, ELAVL1, PAFAH1B2,

Protein Size: 338

Molecular Weight: 36 kDa

Gene ID: 677

NCBI Accession: [NM_004926](#), [NP_004917](#)

UniProt: [Q07352](#)

Application Details

Application Notes: Optimal working dilutions should be determined experimentally by the investigator.

Comment: Antigen size: 338 AA

Restrictions: For Research Use only

Handling

Format: Liquid

Concentration: Lot specific

Buffer: Liquid. Purified antibody supplied in 1x PBS buffer with 0.09 % (w/v) sodium azide and 2 % sucrose.

Preservative: Sodium azide

Precaution of Use: This product contains Sodium azide: a POISONOUS AND HAZARDOUS SUBSTANCE which should be handled by trained staff only.

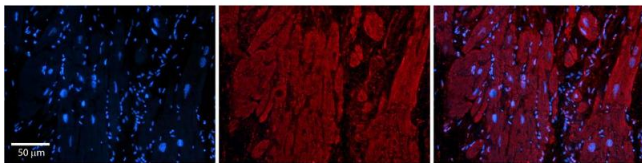
Handling Advice: Avoid repeated freeze-thaw cycles.

Handling

Storage: -20 °C

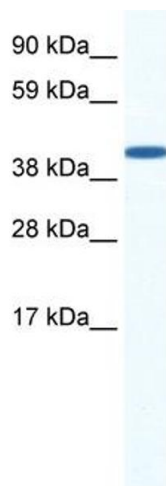
Storage Comment: For short term use, store at 2-8°C up to 1 week. For long term storage, store at -20°C in small aliquots to prevent freeze-thaw cycles.

Images



Immunohistochemistry

Image 1. Rabbit Anti-ZFP36L1 Antibody Catalog Number: ARP33382_P050 Formalin Fixed Paraffin Embedded Tissue: Human Adult heart Observed Staining: Cytoplasmic Primary Antibody Concentration: 1:600 Secondary Antibody: Donkey anti-Rabbit-Cy2/3 Secondary Antibody Concentration: 1:200 Magnification: 20X Exposure Time: 0.5 – 2.0 sec Protocol located in Reviews and Data.



Western Blotting

Image 2. WB Suggested Anti-ZFP36L1 Antibody Titration: 0.2-1 ug/ml ELISA Titer: 1:62500 Positive Control: Human Placenta