

Datasheet for ABIN2777902  
**anti-ZFP36L2 antibody (N-Term)**

## 2 Images

[Go to Product page](#)

## Overview

Quantity:	100 µL
Target:	ZFP36L2
Binding Specificity:	N-Term
Reactivity:	Mouse, Rat, Cow, Guinea Pig
Host:	Rabbit
Clonality:	Polyclonal
Conjugate:	This ZFP36L2 antibody is un-conjugated
Application:	Western Blotting (WB), Immunohistochemistry (IHC)

## Product Details

Immunogen:	The immunogen is a synthetic peptide directed towards the N terminal region of human ZFP36L2
Sequence:	VGTPVAAAPS SGFAPGFLRR HSASNLHALA HPAPSPGSCS PKFPGAANGS
Predicted Reactivity:	Cow: 92%, Guinea Pig: 85%, Mouse: 84%, Rat: 84%
Characteristics:	This is a rabbit polyclonal antibody against ZFP36L2. It was validated on Western Blot using a cell lysate as a positive control.
Purification:	Affinity Purified

## Target Details

Target:	ZFP36L2
---------	---------

## Target Details

Alternative Name:	ZFP36L2 ( <a href="#">ZFP36L2 Products</a> )
Background:	<p>ZFP36L2 is a member of the TIS11 family of early response genes. Family members are induced by various agonists such as the phorbol ester TPA and the polypeptide mitogen EGF. The encoded protein contains a distinguishing putative zinc finger domain with a repeating cys-his motif. This putative nuclear transcription factor most likely functions in regulating the response to growth factors. This gene is a member of the TIS11 family of early response genes. Family members are induced by various agonists such as the phorbol ester TPA and the polypeptide mitogen EGF. The encoded protein contains a distinguishing putative zinc finger domain with a repeating cys-his motif. This putative nuclear transcription factor most likely functions in regulating the response to growth factors. Sequence Note: The RefSeq transcript and protein were derived from transcript and genomic sequence to make the sequence consistent with the reference genome assembly. The genomic coordinates used for the transcript record were based on alignments.</p> <p>Alias Symbols: BRF2, ERF-2, ERF2, RNF162C, TIS11D</p> <p>Protein Interaction Partner: YWHAB, YWHAE, UBC, CUL3,</p> <p>Protein Size: 494</p>
Molecular Weight:	51 kDa
Gene ID:	678
NCBI Accession:	<a href="#">NM_006887</a> , <a href="#">NP_008818</a>
UniProt:	<a href="#">P47974</a>
Pathways:	<a href="#">Stem Cell Maintenance</a>

## Application Details

Application Notes:	Optimal working dilutions should be determined experimentally by the investigator.
Comment:	Antigen size: 494 AA
Restrictions:	For Research Use only

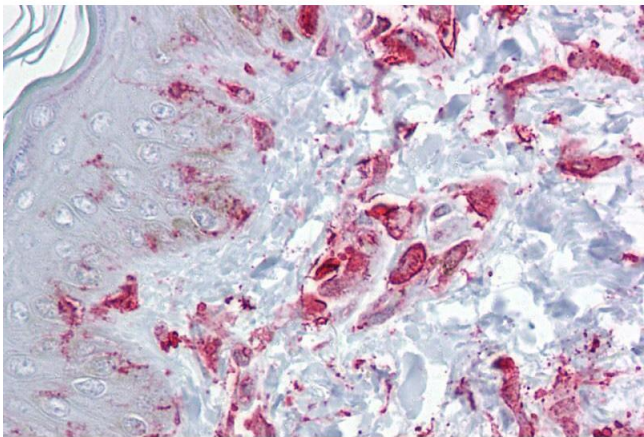
## Handling

Format:	Liquid
Concentration:	Lot specific
Buffer:	Liquid. Purified antibody supplied in 1x PBS buffer with 0.09 % (w/v) sodium azide and 2 %

Handling

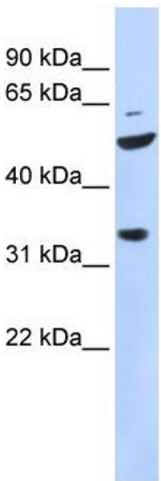
	sucrose.
Preservative:	Sodium azide
Precaution of Use:	This product contains Sodium azide: a POISONOUS AND HAZARDOUS SUBSTANCE which should be handled by trained staff only.
Handling Advice:	Avoid repeated freeze-thaw cycles.
Storage:	-20 °C
Storage Comment:	For short term use, store at 2-8°C up to 1 week. For long term storage, store at -20°C in small aliquots to prevent freeze-thaw cycles.

Images



Immunohistochemistry

**Image 1.** Immunohistochemistry with Skin, dermal fibroblasts tissue at an antibody concentration of 5µg/ml using anti-ZFP36L2 antibody (ARP33383\_P050)



Western Blotting

**Image 2.** WB Suggested Anti-ZFP36L2 Antibody Titration: 0.2-1 ug/ml ELISA Titer: 1:62500 Positive Control: 721\_B cell lysate