

Datasheet for ABIN2777903
anti-SUPT5H antibody (C-Term)[Go to Product page](#)

4 Images

Overview

Quantity:	100 µL
Target:	SUPT5H
Binding Specificity:	C-Term
Reactivity:	Human, Dog, Cow, Rabbit, Horse, Guinea Pig, Zebrafish (Danio rerio)
Host:	Rabbit
Clonality:	Polyclonal
Conjugate:	This SUPT5H antibody is un-conjugated
Application:	Western Blotting (WB), Immunohistochemistry (IHC)

Product Details

Immunogen:	The immunogen is a synthetic peptide directed towards the C terminal region of human SUPT5H
Sequence:	PYAAPSPQGS YQPSPSPQSY HQVAPSPAGY QNTHSPASYH PTPSPMAYQA
Predicted Reactivity:	Cow: 100%, Dog: 100%, Guinea Pig: 100%, Horse: 100%, Human: 100%, Rabbit: 100%, Zebrafish: 92%
Characteristics:	This is a rabbit polyclonal antibody against SUPT5H. It was validated on Western Blot and immunohistochemistry.
Purification:	Affinity Purified

Target Details

Target:	SUPT5H
---------	--------

Target Details

Alternative Name:	SUPT5H (SUPT5H Products)
Background:	<p>SUPT5H and its binding partner regulate transcriptional elongation by RNA polymerase II. SPT4 and SPT5 are involved in both 5,6-dichloro-1-beta-D-ribofuranosylbenzimidazole (DRB)-mediated transcriptional inhibition and the activation of transcriptional elongation by the human immunodeficiency virus type 1 (HIV-1) Tat protein.</p> <p>Alias Symbols: SPT5, SPT5H, Tat-CT1</p> <p>Protein Interaction Partner: POLR2A, BRCA1, UBC, RNF2, SAMHD1, GANAB, SWAP70, PAICS, CARM1, FARSB, SEC24C, RANBP3, CSDE1, SF1, SET, PLOD2, MSH2, MSH6, GART, XRCC6, ATP6V1B2, SOX2, LMNA, CDK9, CCNT2, CCNT1, tat, NSMF, FN1, CSNK2A1, SIK1, ZNF512B, LMAN2, ZFYVE9, SNX4, SUPT4H1, POLR2C,</p> <p>Protein Size: 1087</p>
Molecular Weight:	121 kDa
Gene ID:	6829
NCBI Accession:	NM_003169 , NP_003160
UniProt:	O00267

Application Details

Application Notes:	Optimal working dilutions should be determined experimentally by the investigator.
Comment:	Antigen size: 1087 AA
Restrictions:	For Research Use only

Handling

Format:	Liquid
Concentration:	Lot specific
Buffer:	Liquid. Purified antibody supplied in 1x PBS buffer with 0.09 % (w/v) sodium azide and 2 % sucrose.
Preservative:	Sodium azide
Precaution of Use:	This product contains Sodium azide: a POISONOUS AND HAZARDOUS SUBSTANCE which should be handled by trained staff only.
Handling Advice:	Avoid repeated freeze-thaw cycles.

Handling

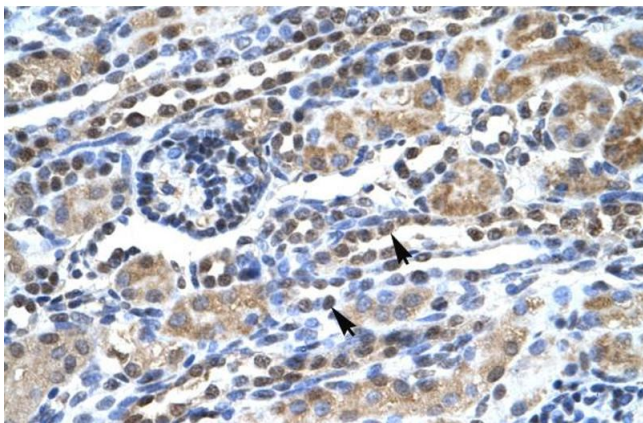
Storage:	-20 °C
Storage Comment:	For short term use, store at 2-8°C up to 1 week. For long term storage, store at -20°C in small aliquots to prevent freeze-thaw cycles.

Images



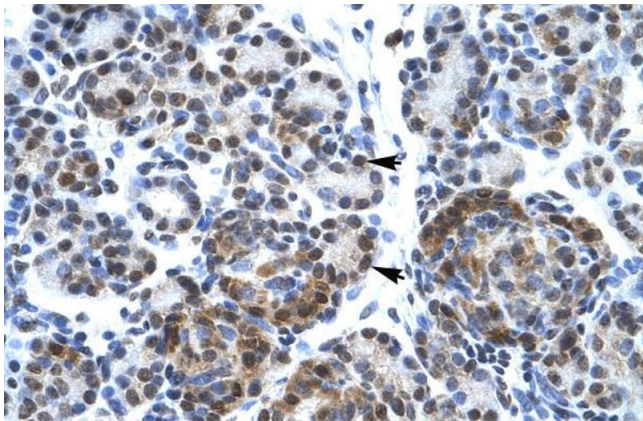
Western Blotting

Image 1. WB Suggested Anti-SUPT5H Antibody Titration: 0.2-1 ug/ml ELISA Titer: 1:62500 Positive Control: HepG2 cell lysate



Immunohistochemistry

Image 2. Human kidney



Immunohistochemistry

Image 3. Human Pancreas

Please check the [product details page](#) for more images. Overall 4 images are available for ABIN2777903.