

Datasheet for ABIN2777912
anti-T-Box 1 antibody (C-Term)[Go to Product page](#)

2 Images

Overview

Quantity:	100 µL
Target:	T-Box 1 (TBX1)
Binding Specificity:	C-Term
Reactivity:	Human, Mouse, Rat, Guinea Pig, Rabbit, Dog
Host:	Rabbit
Clonality:	Polyclonal
Conjugate:	This T-Box 1 antibody is un-conjugated
Application:	Western Blotting (WB), Immunohistochemistry (IHC)

Product Details

Immunogen:	The immunogen is a synthetic peptide directed towards the C terminal region of human TBX1
Sequence:	PNPELRLEAP GASEPLHHHP YKYPAAAYDH YLGAKSRPAP YPLPGLRGHG
Predicted Reactivity:	Dog: 100%, Guinea Pig: 100%, Human: 100%, Mouse: 100%, Rabbit: 100%, Rat: 100%
Characteristics:	This is a rabbit polyclonal antibody against TBX1. It was validated on Western Blot and immunohistochemistry.
Purification:	Protein A purified

Target Details

Target:	T-Box 1 (TBX1)
Alternative Name:	TBX1 (TBX1 Products)

Target Details

Background:	<p>TBX1 is a member of a phylogenetically conserved family of genes that share a common DNA-binding domain, the T-box. T-box genes encode transcription factors involved in the regulation of developmental processes. TBX1 product shares 98 % amino acid sequence identity with the mouse ortholog. DiGeorge syndrome (DGS)/velocardiofacial syndrome (VCFS), a common congenital disorder characterized by neural-crest-related developmental defects, has been associated with deletions of chromosome 22q11.2, where TBX1 has been mapped. Studies using mouse models of DiGeorge syndrome suggest a major role for this gene in the molecular etiology of DGS/VCFS. Several alternatively spliced transcript variants encoding different isoforms have been described for this gene.</p> <p>Alias Symbols: DGS, TGA, CAFS, CTHM, DGCR, DORV, VCFS, TBX1C</p> <p>Protein Interaction Partner: TERF2, TERF1,</p> <p>Protein Size: 495</p>
Molecular Weight:	53 kDa
Gene ID:	6899
NCBI Accession:	NM_080647 , NP_542378
Pathways:	Retinoic Acid Receptor Signaling Pathway , Sensory Perception of Sound , Cellular Response to Molecule of Bacterial Origin , Regulation of Muscle Cell Differentiation

Application Details

Application Notes:	Optimal working dilutions should be determined experimentally by the investigator.
Comment:	Antigen size: 495 AA
Restrictions:	For Research Use only

Handling

Format:	Liquid
Concentration:	Lot specific
Buffer:	Liquid. Purified antibody supplied in 1x PBS buffer with 0.09 % (w/v) sodium azide and 2 % sucrose.
Preservative:	Sodium azide
Precaution of Use:	This product contains Sodium azide: a POISONOUS AND HAZARDOUS SUBSTANCE which should be handled by trained staff only.

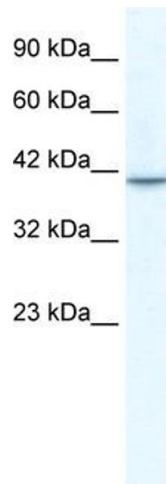
Handling

Handling Advice: Avoid repeated freeze-thaw cycles.

Storage: -20 °C

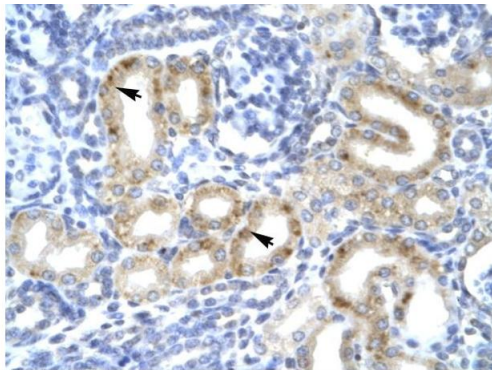
Storage Comment: For short term use, store at 2-8°C up to 1 week. For long term storage, store at -20°C in small aliquots to prevent freeze-thaw cycles.

Images



Western Blotting

Image 1. WB Suggested Anti-TBX1 Antibody Titration:
5.0ug/ml Positive Control: Jurkat cell lysate



Rabbit Anti-TBX1 Antibody
Catalog Number: ARP33399
Lot Number: QC2875
Paraffin Embedded Tissue: Human Kidney
Cells with Positive label: Epithelial cells of renal tubule (Indicated with Arrows)
Antibody Concentration: 4.0-8.0 µg/ml
Magnification: 400X

Immunohistochemistry

Image 2. Human kidney