

Datasheet for ABIN2777929
anti-TCF19 antibody (N-Term)



[Go to Product page](#)

1 Image

Overview

Quantity:	100 µL
Target:	TCF19
Binding Specificity:	N-Term
Reactivity:	Human, Rat, Mouse, Dog, Horse, Pig, Rabbit, Cow
Host:	Rabbit
Clonality:	Polyclonal
Conjugate:	This TCF19 antibody is un-conjugated
Application:	Western Blotting (WB)

Product Details

Immunogen:	The immunogen is a synthetic peptide directed towards the N terminal region of human TCF19
Sequence:	VSLEDHSSQG TLVNNVRLPR GHRLELSGDG LLTFGPEGPP GTSPSEFYFM
Predicted Reactivity:	Cow: 93%, Dog: 100%, Horse: 100%, Human: 100%, Mouse: 100%, Pig: 100%, Rabbit: 93%, Rat: 100%
Characteristics:	This is a rabbit polyclonal antibody against TCF19. It was validated on Western Blot using a cell lysate as a positive control.
Purification:	Affinity Purified

Target Details

Target:	TCF19
---------	-------

Target Details

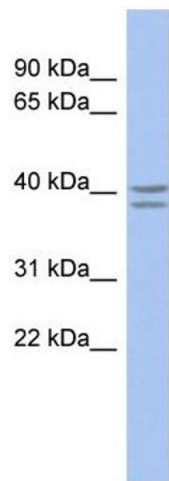
Alternative Name:	TCF19 (TCF19 Products)
Background:	<p>TCF19 is a potential trans-activating factor that could play an important role in the transcription of genes required for the later stages of cell cycle progression.</p> <p>Alias Symbols: SC1, SC1-1</p> <p>Protein Interaction Partner: DNAJA3, GOLGA2, APP, UBE3A, LZTR1, NGFR,</p> <p>Protein Size: 345</p>
Molecular Weight:	37 kDa
Gene ID:	6941
NCBI Accession:	NM_007109 , NP_009040
UniProt:	Q9Y242

Application Details

Application Notes:	Optimal working dilutions should be determined experimentally by the investigator.
Comment:	Antigen size: 345 AA
Restrictions:	For Research Use only

Handling

Format:	Liquid
Concentration:	Lot specific
Buffer:	Liquid. Purified antibody supplied in 1x PBS buffer with 0.09 % (w/v) sodium azide and 2 % sucrose.
Preservative:	Sodium azide
Precaution of Use:	This product contains Sodium azide: a POISONOUS AND HAZARDOUS SUBSTANCE which should be handled by trained staff only.
Handling Advice:	Avoid repeated freeze-thaw cycles.
Storage:	-20 °C
Storage Comment:	For short term use, store at 2-8°C up to 1 week. For long term storage, store at -20°C in small aliquots to prevent freeze-thaw cycles.



Western Blotting

Image 1. WB Suggested Anti-TCF19 Antibody Titration:
0.2-1 ug/ml ELISA Titer: 1:312500 Positive Control: THP-1
cell lysate