

Datasheet for ABIN2777930
anti-TCF21 antibody (N-Term)[Go to Product page](#)

8 Images

Overview

Quantity:	100 µL
Target:	TCF21
Binding Specificity:	N-Term
Reactivity:	Human, Mouse, Rat, Dog, Cow, Guinea Pig, Rabbit, Horse
Host:	Rabbit
Clonality:	Polyclonal
Conjugate:	This TCF21 antibody is un-conjugated
Application:	Western Blotting (WB), Immunohistochemistry (IHC)

Product Details

Immunogen:	The immunogen is a synthetic peptide directed towards the N terminal region of human TCF21
Sequence:	SNCENGSPQK GRGGLGKRRK APTKKSPLSG VSQEGKQVQR NAANARERAR
Predicted Reactivity:	Cow: 100%, Dog: 100%, Guinea Pig: 100%, Horse: 100%, Human: 100%, Mouse: 100%, Rabbit: 100%, Rat: 100%
Characteristics:	This is a rabbit polyclonal antibody against TCF21. It was validated on Western Blot using a cell lysate as a positive control.
Purification:	Affinity Purified

Target Details

Target:	TCF21
---------	-------

Target Details

Alternative Name:	TCF21 (TCF21 Products)
Background:	<p>The TCF21 gene encodes a transcription factor of the basic helix-loop-helix family. The TCF21 product is mesoderm specific, and expressed in embryonic epicardium, mesenchyme-derived tissues of lung, gut, gonad, and both mesenchymal and glomerular epithelial cells in the kidney.</p> <p>Alias Symbols: POD1, bHLHa23</p> <p>Protein Interaction Partner: TCF12, TCF3, TCF4, KLF15, LMO4, GTF3C5, HOXB6, APEX1, APLP1,</p> <p>Protein Size: 179</p>
Molecular Weight:	20 kDa
Gene ID:	6943
NCBI Accession:	NM_003206 , NP_003197
UniProt:	O43680
Pathways:	Intracellular Steroid Hormone Receptor Signaling Pathway , Regulation of Intracellular Steroid Hormone Receptor Signaling

Application Details

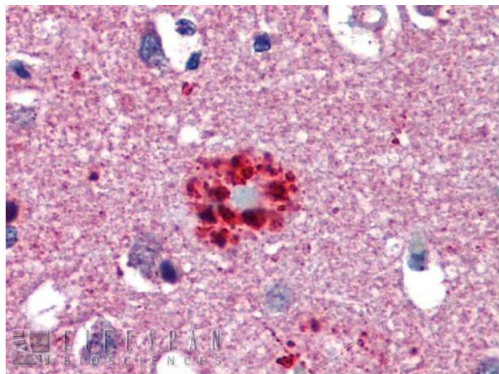
Application Notes:	Optimal working dilutions should be determined experimentally by the investigator.
Comment:	Antigen size: 179 AA
Restrictions:	For Research Use only

Handling

Format:	Liquid
Concentration:	Lot specific
Buffer:	Liquid. Purified antibody supplied in 1x PBS buffer with 0.09 % (w/v) sodium azide and 2 % sucrose.
Preservative:	Sodium azide
Precaution of Use:	This product contains Sodium azide: a POISONOUS AND HAZARDOUS SUBSTANCE which should be handled by trained staff only.
Handling Advice:	Avoid repeated freeze-thaw cycles.
Storage:	-20 °C
Storage Comment:	For short term use, store at 2-8°C up to 1 week. For long term storage, store at -20°C in small

aliquots to prevent freeze-thaw cycles.

Images



Rabbit Anti-TCF21 Antibody
Catalog Number: ARP33421
Lot Number: QC3418
Paraffin Embedded Tissue: Human Brain, cortex, senile plaque
Antibody Concentration: 5.0 µg/ml

Data courtesy of Lifespan Biosciences, Inc.

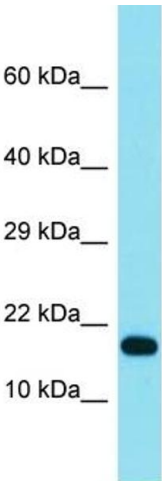
Immunohistochemistry

Image 1. Immunohistochemistry with Human Brain, cortex, senile plaque tissue at an antibody concentration of 5.0ug/ml using anti-TCF21 antibody



Western Blotting

Image 2. WB Suggested Anti-TCF21 Antibody Titration: 0.2-1 ug/ml Positive Control: Human Lung



Host: Rabbit
Target Name: TCF21
Sample Tissue: Hela Cell Lysate
Antibody Dilution: 1.0µg/ml

Western Blotting

Image 3. Host: Rabbit Target Name: TCF21 Sample Type: Hela Whole cell lysates Antibody Dilution: 1.0ug/ml

Please check the [product details page](#) for more images. Overall 8 images are available for ABIN2777930.