

Datasheet for ABIN2777933  
**anti-MLX antibody (C-Term)**[Go to Product page](#)

3 Images

1 Publication

## Overview

Quantity:	100 µL
Target:	MLX
Binding Specificity:	C-Term
Reactivity:	Human, Mouse, Rat, Cow, Dog, Pig, Goat, Horse, Rabbit
Host:	Rabbit
Clonality:	Polyclonal
Conjugate:	This MLX antibody is un-conjugated
Application:	Western Blotting (WB), Immunohistochemistry (IHC)

## Product Details

Immunogen:	The immunogen is a synthetic peptide directed towards the C terminal region of human MLX
Sequence:	LRKDV TALKI MKVNYEQIVK AHQDN PHEGE DQVSDQVKFN VFQGIMDSL F
Predicted Reactivity:	Cow: 100%, Dog: 100%, Goat: 100%, Horse: 100%, Human: 100%, Mouse: 100%, Pig: 100%, Rabbit: 86%, Rat: 100%
Characteristics:	This is a rabbit polyclonal antibody against MLX. It was validated on Western Blot using a cell lysate as a positive control.
Purification:	Affinity Purified

## Target Details

Target:	MLX
---------	-----

## Target Details

Alternative Name:	MLX ( <a href="#">MLX Products</a> )
Background:	<p>MLX belongs to the family of basic helix-loop-helix leucine zipper (bHLH-Zip) transcription factors. These factors form heterodimers with Mad proteins and play a role in proliferation, determination and differentiation. MLX may act to diversify Mad family function by its restricted association with a subset of the Mad family of transcriptional repressors, namely, Mad1 and Mad4. The product of this gene belongs to the family of basic helix-loop-helix leucine zipper (bHLH-Zip) transcription factors. These factors form heterodimers with Mad proteins and play a role in proliferation, determination and differentiation. This gene product may act to diversify Mad family function by its restricted association with a subset of the Mad family of transcriptional repressors, namely, Mad1 and Mad4. Alternatively spliced transcript variants encoding different isoforms have been identified for this gene.</p> <p>Alias Symbols: MAD7, MXD7, TCFL4, bHLHd13</p> <p>Protein Interaction Partner: ZBTB32, GABARAPL2, RBM39, AES, UBC, SAP30BP, ID3, APP, SUMO1, MLXIPL, MLXIP, MXD4, MNT, MAD1L1, MLX, MXD1,</p> <p>Protein Size: 298</p>
Molecular Weight:	33 kDa
Gene ID:	6945
NCBI Accession:	<a href="#">NM_170607</a> , <a href="#">NP_733752</a>
UniProt:	<a href="#">Q9UH92</a>

## Application Details

Application Notes:	Optimal working dilutions should be determined experimentally by the investigator.
Comment:	Antigen size: 298 AA
Restrictions:	For Research Use only

## Handling

Format:	Liquid
Concentration:	Lot specific
Buffer:	Liquid. Purified antibody supplied in 1x PBS buffer with 0.09 % (w/v) sodium azide and 2 % sucrose.
Preservative:	Sodium azide

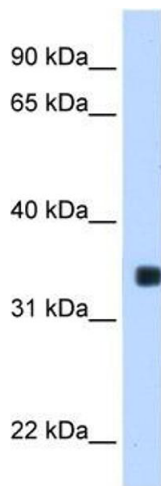
## Handling

Precaution of Use:	This product contains Sodium azide: a POISONOUS AND HAZARDOUS SUBSTANCE which should be handled by trained staff only.
Handling Advice:	Avoid repeated freeze-thaw cycles.
Storage:	-20 °C
Storage Comment:	For short term use, store at 2-8°C up to 1 week. For long term storage, store at -20°C in small aliquots to prevent freeze-thaw cycles.

## Publications

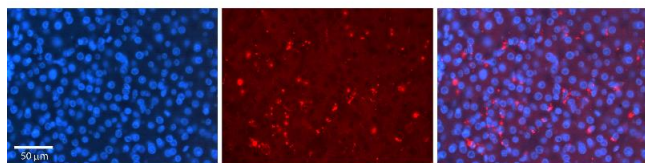
Product cited in:	Gerhard, Wagner, Feingold, Shenmen, Grouse, Schuler, Klein, Old, Rasooly, Good, Guyer, Peck, Derge, Lipman, Collins, Jang, Sherry, Feolo, Misquitta, Lee, Rotmistrovsky, Greenhut, Schaefer, Buetow et al.: "The status, quality, and expansion of the NIH full-length cDNA project: the Mammalian Gene Collection (MGC). ..." in: <b>Genome research</b> , Vol. 14, Issue 10B, pp. 2121-7, (2004) ( <a href="#">PubMed</a> ).
-------------------	--

## Images



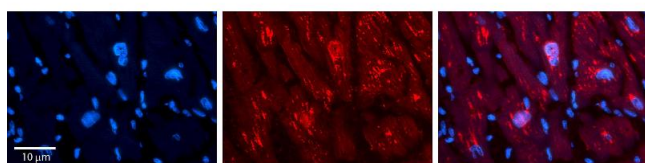
### Western Blotting

**Image 1.** WB Suggested Anti-MLX Antibody Titration: 0.2-1 ug/ml Positive Control: Transfected 293T



#### Immunohistochemistry

**Image 2.** Rabbit Anti-MLX Antibody Formalin Fixed Paraffin Embedded Tissue: Human Liver Tissue Observed Staining: Cytoplasm in speckles in hepatocytes Primary Antibody Concentration: 1:100 Other Working Concentrations: 1:600 Secondary Antibody: Donkey anti-Rabbit-Cy3 Secondary Antibody Concentration: 1:200 Magnification: 20X Exposure Time: 0.5 - 2.0 sec



#### Immunohistochemistry

**Image 3.** Rabbit Anti-MLX Antibody Formalin Fixed Paraffin Embedded Tissue: Human heart Tissue Observed Staining: Cytoplasmic, nucleus Primary Antibody Concentration: N/A Other Working Concentrations: 1:600 Secondary Antibody: Donkey anti-Rabbit-Cy3 Secondary Antibody Concentration: 1:200 Magnification: 20X Exposure Time: 0.5 - 2.0 sec