

Datasheet for ABIN2777945  
**anti-TFE3 antibody (Middle Region)**[Go to Product page](#)

## 2 Images

## Overview

|                      |  |
|----------------------|--|
| Quantity:            | 100 µL   |
| Target:              | TFE3   |
| Binding Specificity: | Middle Region  |
| Reactivity:          | Human, Mouse, Rat, Dog, Cow, Horse, Rabbit, Guinea Pig, Zebrafish (Danio rerio), Sheep |
| Host:                | Rabbit   |
| Clonality:           | Polyclonal   |
| Conjugate:           | This TFE3 antibody is un-conjugated  |
| Application:         | Western Blotting (WB)  |

## Product Details

|                       |  |
|-----------------------|--|
| Immunogen:            | The immunogen is a synthetic peptide directed towards the middle region of human TFE3  |
| Sequence:             | AELPNIKREI SETEAKALLK ERQKKDNHNL IERRRRFNIN DRIKELGTLI   |
| Predicted Reactivity: | Cow: 100%, Dog: 100%, Guinea Pig: 100%, Horse: 100%, Human: 100%, Mouse: 100%, Rabbit: 100%, Rat: 100%, Sheep: 77%, Zebrafish: 77% |
| Characteristics:      | This is a rabbit polyclonal antibody against TFE3. It was validated on Western Blot using a cell lysate as a positive control.     |
| Purification:         | Affinity Purified  |

## Target Details

|         |      |
|---------|------|
| Target: | TFE3 |
|---------|------|

## Target Details

|                   |   |
|-------------------|---|
| Alternative Name: | TFE3 ( <a href="#">TFE3 Products</a> )  |
| Background:       | <p>TFE3, a member of the helix-loop-helix family of transcription factors, binds to the mu-E3 motif of the immunoglobulin heavy-chain enhancer and is expressed in many cell types. TFE3, a member of the helix-loop-helix family of transcription factors, binds to the mu-E3 motif of the immunoglobulin heavy-chain enhancer and is expressed in many cell types (Henthorn et al., 1991 [PubMed 1685140]). [supplied by OMIM]. Publication Note: This RefSeq record includes a subset of the publications that are available for this gene. Please see the Entrez Gene record to access additional publications.</p> <p>Alias Symbols: RCCP2, TFEA, RCCX1, bHLHe33</p> <p>Protein Interaction Partner: SUMO2, YWHAG, TFEC, SMAD3, SMAD4, TFEB, E2F3, TFE3, HMGB1, MITF, SMARCE1, PHB2, TRIM28, EIF3A, CUL2, VARS, RPL38, RPA3, PFAS, NEDD8, EPRS, CLTC, AKR1B1, ACLY,</p> <p>Protein Size: 575</p> |
| Molecular Weight: | 61 kDa  |
| Gene ID:          | 7030  |
| NCBI Accession:   | <a href="#">NM_006521</a> , <a href="#">NP_006512</a>   |
| UniProt:          | <a href="#">P19532</a>  |

## Application Details

|                    |  |
|--------------------|--|
| Application Notes: | Optimal working dilutions should be determined experimentally by the investigator. |
| Comment:           | Antigen size: 575 AA   |
| Restrictions:      | For Research Use only  |

## Handling

|                    |  |
|--------------------|--|
| Format:            | Liquid   |
| Concentration:     | Lot specific   |
| Buffer:            | Liquid. Purified antibody supplied in 1x PBS buffer with 0.09 % (w/v) sodium azide and 2 % sucrose.                    |
| Preservative:      | Sodium azide   |
| Precaution of Use: | This product contains Sodium azide: a POISONOUS AND HAZARDOUS SUBSTANCE which should be handled by trained staff only. |

## Handling

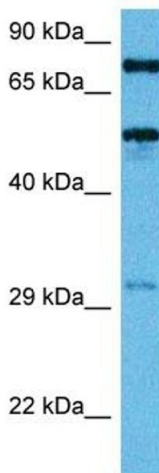
|                  |   |
|------------------|---|
| Handling Advice: | Avoid repeated freeze-thaw cycles.  |
| Storage:         | -20 °C  |
| Storage Comment: | For short term use, store at 2-8°C up to 1 week. For long term storage, store at -20°C in small aliquots to prevent freeze-thaw cycles. |

## Images



### Western Blotting

**Image 1.** WB Suggested Anti-TFE3 Antibody Titration: 0.2-1 ug/ml ELISA Titer: 1:62500 Positive Control: MCF7 cell lysate



### Western Blotting

**Image 2.** Host: Mouse Target Name: TFE3 Sample Tissue: Mouse Heart Antibody Dilution: 1ug/ml