

Datasheet for ABIN2777980  
**anti-ZNF182 antibody (Middle Region)**[Go to Product page](#)

## 3 Images

## Overview

Quantity:	100 µL
Target:	ZNF182
Binding Specificity:	Middle Region
Reactivity:	Human, Dog, Mouse, Cow, Rat, Horse, Rabbit, Pig
Host:	Rabbit
Clonality:	Polyclonal
Conjugate:	This ZNF182 antibody is un-conjugated
Application:	Western Blotting (WB), Immunohistochemistry (IHC)

## Product Details

Immunogen:	The immunogen is a synthetic peptide directed towards the middle region of human ZNF21
Sequence:	RTHTGEKPYA CTECGKAFRE KSTFTVHQRT HTGEKPYKCT ECGKAFTQKS
Predicted Reactivity:	Cow: 100%, Dog: 100%, Horse: 100%, Human: 100%, Mouse: 100%, Pig: 100%, Rabbit: 100%, Rat: 100%
Characteristics:	This is a rabbit polyclonal antibody against ZNF21. It was validated on Western Blot and immunohistochemistry.
Purification:	Affinity Purified

## Target Details

Target:	ZNF182
---------	--------

## Target Details

Alternative Name:	ZNF21 ( <a href="#">ZNF182 Products</a> )
Background:	Located on chromosome X, ZNF21 encodes a zinc finger protein 21. Alias Symbols: KOX14, ZNF21, HHZ150, Zfp182 Protein Size: 620
Molecular Weight:	72 kDa
Gene ID:	7569
NCBI Accession:	<a href="#">NM_001007088</a> , <a href="#">NP_001007089</a>
UniProt:	<a href="#">Q96QH7</a>

## Application Details

Application Notes:	Optimal working dilutions should be determined experimentally by the investigator.
Comment:	Antigen size: 620 AA
Restrictions:	For Research Use only

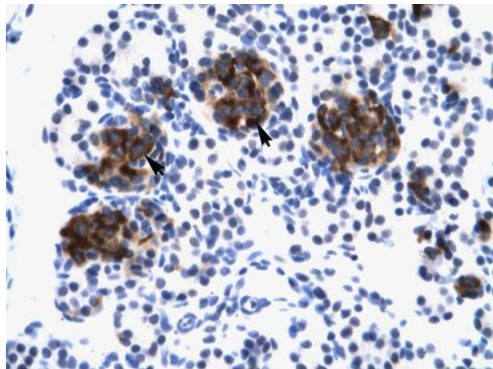
## Handling

Format:	Liquid
Concentration:	Lot specific
Buffer:	Liquid. Purified antibody supplied in 1x PBS buffer with 0.09 % (w/v) sodium azide and 2 % sucrose.
Preservative:	Sodium azide
Precaution of Use:	This product contains Sodium azide: a POISONOUS AND HAZARDOUS SUBSTANCE which should be handled by trained staff only.
Handling Advice:	Avoid repeated freeze-thaw cycles.
Storage:	-20 °C
Storage Comment:	For short term use, store at 2-8°C up to 1 week. For long term storage, store at -20°C in small aliquots to prevent freeze-thaw cycles.



### Western Blotting

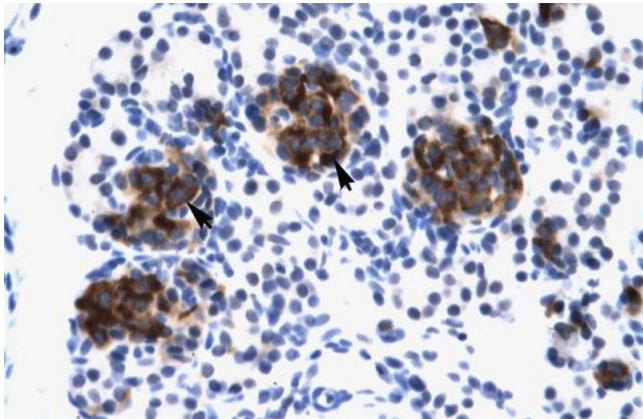
**Image 1.** WB Suggested Anti-ZNF21 Antibody Titration: 0.2-1 ug/ml Positive Control: HepG2 cell lysate



Rabbit Anti-ZNF21 Antibody  
Catalog Number: ARP33514  
Lot Number: QC3057  
Paraffin Embedded Tissue: Human Pancreas  
Cells with Positive label: Epithelial cells of pancreatic acinus(Indicated with Arrows)  
Antibody Concentration: 4.0-8.0 µg/ml

### Immunohistochemistry

**Image 2.** Human Pancreas



### Immunohistochemistry

**Image 3.** Human Pancreas