



[Go to Product page](#)

Datasheet for ABIN2777986
anti-ZNF232 antibody (N-Term)

1 Image

Overview

Quantity:	100 µL
Target:	ZNF232
Binding Specificity:	N-Term
Reactivity:	Human, Mouse, Rat, Guinea Pig, Cow, Horse, Dog, Rabbit
Host:	Rabbit
Clonality:	Polyclonal
Conjugate:	This ZNF232 antibody is un-conjugated
Application:	Western Blotting (WB)

Product Details

Immunogen:	The immunogen is a synthetic peptide directed towards the N-terminal region of Human ZNF232
Sequence:	FRQRFRLRY QETPGPREAL SQLRVLCCEW LRPEKHTKEQ ILEFLVLEQF
Predicted Reactivity:	Cow: 100%, Dog: 100%, Guinea Pig: 100%, Horse: 100%, Human: 100%, Mouse: 100%, Rabbit: 86%, Rat: 100%
Characteristics:	This is a rabbit polyclonal antibody against ZNF232. It was validated on Western Blot.
Purification:	Affinity Purified

Target Details

Target:	ZNF232
---------	--------

Target Details

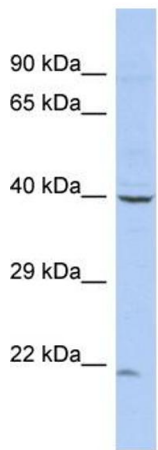
Alternative Name:	ZNF232 (ZNF232 Products)
Background:	ZNF232 is a new candidate transcription factor. Protein Interaction Partner: PPCDC, ZNF446, MTUS2, EMD, ALB, NR2E3, YY1, Protein Size: 408
Molecular Weight:	44 kDa
Gene ID:	7775

Application Details

Application Notes:	Optimal working dilution should be determined by the investigator.
Restrictions:	For Research Use only

Handling

Format:	Liquid
Concentration:	1 mg/mL
Buffer:	Liquid. Purified antibody supplied in 1x PBS buffer with 0.09 % (w/v) sodium azide and 2 % sucrose.
Preservative:	Sodium azide
Precaution of Use:	This product contains Sodium azide: a POISONOUS AND HAZARDOUS SUBSTANCE which should be handled by trained staff only.
Handling Advice:	Avoid repeat freeze-thaw cycles.
Storage:	-20 °C
Storage Comment:	For short term use, store at 2-8°C up to 1 week. For long term storage, store at -20°C in small aliquots to prevent freeze-thaw cycles.



Host: Rabbit
Target Name: ZNF232
Sample Tissue: COLO205 Cell Lysate
Antibody Dilution: 1.0µg/ml

Western Blotting

Image 1. Host: Rabbit Target Name: ZNF232 Sample Type: COLO205 Whole cell lysates Antibody Dilution: 1.0ug/ml
ZNF232 is supported by BioGPS gene expression data to be expressed in COLO205