



[Go to Product page](#)

Datasheet for ABIN2777987

anti-ZSCAN22 antibody (N-Term)

1 Image

Overview

Quantity:	100 µL
Target:	ZSCAN22
Binding Specificity:	N-Term
Reactivity:	Human, Mouse, Rat, Dog, Cow, Guinea Pig, Horse, Rabbit
Host:	Rabbit
Clonality:	Polyclonal
Conjugate:	This ZSCAN22 antibody is un-conjugated
Application:	Western Blotting (WB)

Product Details

Immunogen:	The immunogen is a synthetic peptide directed towards the N-terminal region of Human ZSCAN22
Sequence:	RFRHFRYEEA SGPHEAL AHL RALCCQWLQP EAHSKEQILE LLVLEQFLGA
Predicted Reactivity:	Cow: 85%, Dog: 85%, Guinea Pig: 85%, Horse: 85%, Human: 100%, Mouse: 86%, Rabbit: 92%, Rat: 93%
Characteristics:	This is a rabbit polyclonal antibody against ZSCAN22. It was validated on Western Blot.
Purification:	Affinity Purified

Target Details

Target:	ZSCAN22
---------	---------

Target Details

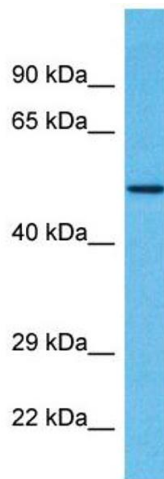
Alternative Name:	ZSCAN22 (ZSCAN22 Products)
Background:	ZSCAN22 may be involved in transcriptional regulation. Alias Symbols: HKR2, ZNF50 Protein Interaction Partner: ZSCAN22, ZNF483, ZNF496, PGBD1, ZNF446, ZSCAN32, UBC, Protein Size: 491
Molecular Weight:	54 kDa
Gene ID:	342945
NCBI Accession:	NM_181846 , NP_862829
UniProt:	P10073

Application Details

Application Notes:	Optimal working dilution should be determined by the investigator.
Restrictions:	For Research Use only

Handling

Format:	Liquid
Concentration:	1 mg/mL
Buffer:	Liquid. Purified antibody supplied in 1x PBS buffer with 0.09 % (w/v) sodium azide and 2 % sucrose.
Preservative:	Sodium azide
Precaution of Use:	This product contains Sodium azide: a POISONOUS AND HAZARDOUS SUBSTANCE which should be handled by trained staff only.
Handling Advice:	Avoid repeat freeze-thaw cycles.
Storage:	-20 °C
Storage Comment:	For short term use, store at 2-8°C up to 1 week. For long term storage, store at -20°C in small aliquots to prevent freeze-thaw cycles.



Western Blotting

Image 1. Host: Rabbit Target Name: ZSCAN22 Sample Type: Breast Tumor lysates Antibody Dilution: 1.0ug/ml