

Datasheet for ABIN2777990
anti-RPS16 antibody (N-Term)

5 Images

2 Publications

[Go to Product page](#)

Overview

Quantity:	100 µL
Target:	RPS16
Binding Specificity:	N-Term
Reactivity:	Human, Mouse, Rat, Zebrafish (Danio rerio), Dog, Cow, Rabbit, Guinea Pig, Horse
Host:	Rabbit
Clonality:	Polyclonal
Conjugate:	This RPS16 antibody is un-conjugated
Application:	Western Blotting (WB), Immunohistochemistry (IHC)

Product Details

Immunogen:	The immunogen is a synthetic peptide directed towards the N terminal region of human RPS16
Sequence:	SKGPLQSVQV FGRKKTATAV AHCKRGNGLI KVNGRPLEMI EPRTLQYKLL
Predicted Reactivity:	Cow: 100%, Dog: 100%, Guinea Pig: 100%, Horse: 100%, Human: 100%, Mouse: 100%, Rabbit: 100%, Rat: 100%, Zebrafish: 100%
Characteristics:	This is a rabbit polyclonal antibody against RPS16. It was validated on Western Blot and immunohistochemistry.
Purification:	Protein A purified

Target Details

Target:	RPS16
---------	-------

Target Details

Alternative Name:	RPS16 (RPS16 Products)
Background:	<p>Ribosomes, the organelles that catalyze protein synthesis, consist of a small 40S subunit and a large 60S subunit. Together these subunits are composed of 4 RNA species and approximately 80 structurally distinct proteins. RPS16 is a ribosomal protein that is a component of the 40S subunit. The protein belongs to the S9P family of ribosomal proteins. It is located in the cytoplasm. As is typical for genes encoding ribosomal proteins, there are multiple processed pseudogenes of this gene dispersed through the genome.</p> <p>Alias Symbols: S16</p> <p>Protein Interaction Partner: HUWE1, UBC, TP53, CEP76, TUBGCP4, CEP250, CEP57, AURKB, TUBG1, CDKN1A, AURKA, ASB14, ASB15, ZBTB1, EED, WIBG, EIF2A, TSR1, EIF3L, RPS3, RPS2, RPS6, RPS5, RPS4X, RPS3A, RPSA, FAU, SND1, LARP1, GNB2L1, DYNLT3, RPS29, RPS28, RPS27, RPS26, RPS25, RPS24, RPS23</p> <p>Protein Size: 146</p>
Molecular Weight:	16 kDa
Gene ID:	6217
NCBI Accession:	NM_001020 , NP_001011
UniProt:	P62249

Application Details

Application Notes:	Optimal working dilutions should be determined experimentally by the investigator.
Comment:	Antigen size: 146 AA
Restrictions:	For Research Use only

Handling

Format:	Liquid
Concentration:	Lot specific
Buffer:	Liquid. Purified antibody supplied in 1x PBS buffer with 0.09 % (w/v) sodium azide and 2 % sucrose.
Preservative:	Sodium azide
Precaution of Use:	This product contains Sodium azide: a POISONOUS AND HAZARDOUS SUBSTANCE which should be handled by trained staff only.

Handling

Handling Advice:	Avoid repeated freeze-thaw cycles.
Storage:	-20 °C
Storage Comment:	For short term use, store at 2-8°C up to 1 week. For long term storage, store at -20°C in small aliquots to prevent freeze-thaw cycles.

Publications

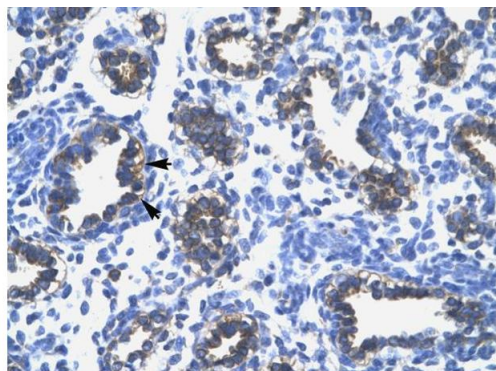
Product cited in: Gerhard, Wagner, Feingold, Shenmen, Grouse, Schuler, Klein, Old, Rasooly, Good, Guyer, Peck, Derge, Lipman, Collins, Jang, Sherry, Feolo, Misquitta, Lee, Rotmistrovsky, Greenhut, Schaefer, Buetow et al.: "The status, quality, and expansion of the NIH full-length cDNA project: the Mammalian Gene Collection (MGC). ..." in: **Genome research**, Vol. 14, Issue 10B, pp. 2121-7, (2004) ([PubMed](#)).

Images



Western Blotting

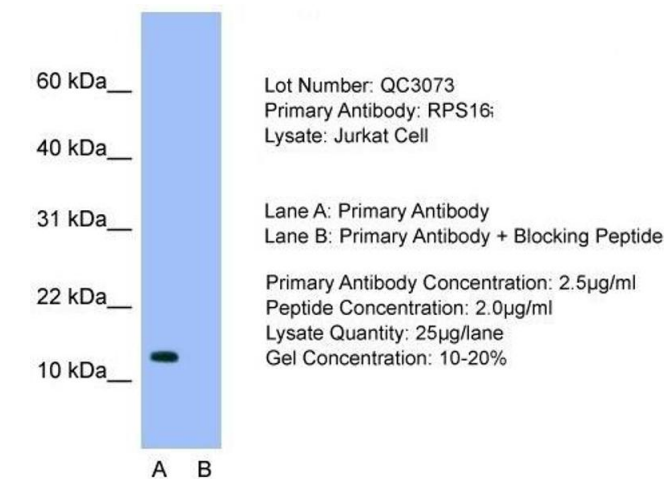
Image 1. WB Suggested Anti-RPS16 Antibody Titration:
1.25ug/ml Positive Control: Jurkat cell lysate



Rabbit Anti-RPS16 Antibody
Catalog Number: ARP33535
Lot Number: QC3073
Paraffin Embedded Tissue: Human Lung
Cells with Positive label: Alveolar cells (Indicated with Arrows)
Antibody Concentration: 4.0-8.0 µg/ml
Magnification: 400X

Immunohistochemistry

Image 2. Human Lung



Western Blotting

Image 3. Host: Rabbit
Target Name: RPS16
Sample Tissue: Jurkat cell lysates
Lane A: Primary Antibody
Lane B: Primary Antibody + Blocking Peptide
Primary Antibody Concentration: 2.5 µg/mL Peptide Concentration: 2.0 µg/mL Lysate Quantity: 25 µg/lane Gel Concentration: 10-20%

Please check the [product details page](#) for more images. Overall 5 images are available for ABIN2777990.