

Datasheet for ABIN2777994
anti-APOBEC3G antibody (N-Term)

4 Images

[Go to Product page](#)

Overview

Quantity:	100 µL
Target:	APOBEC3G
Binding Specificity:	N-Term
Reactivity:	Human, Pig
Host:	Rabbit
Clonality:	Polyclonal
Conjugate:	This APOBEC3G antibody is un-conjugated
Application:	Western Blotting (WB), Immunohistochemistry (IHC)

Product Details

Immunogen:	The immunogen is a synthetic peptide directed towards the N terminal region of human APOBEC3G
Sequence:	AKIFRGQVYS ELKYHPEMRF FHWFSKWRKL HRDQEYEVTV YISWSPCTKC
Predicted Reactivity:	Human: 100%, Pig: 79%
Characteristics:	This is a rabbit polyclonal antibody against APOBEC3G. It was validated on Western Blot and immunohistochemistry.
Purification:	Affinity Purified

Target Details

Target:	APOBEC3G
---------	----------

Target Details

Alternative Name:	APOBEC3G (APOBEC3G Products)
Background:	<p>APOBEC3G is a member of the cytidine deaminase gene family. It is one of seven related genes or pseudogenes found in a cluster, thought to result from gene duplication, on chromosome 22. Members of the cluster encode proteins that are structurally and functionally related to the C to U RNA-editing cytidine deaminase APOBEC1. It is thought that the proteins may be RNA editing enzymes and have roles in growth or cell cycle control. The protein encoded by this gene has been found to be a specific inhibitor of human immunodeficiency virus-1 (HIV-1) infectivity.</p> <p>Alias Symbols: HL-2, HBXBP, ASGPR2, ASGP-R2, CLEC4H2, APOBEC3G</p> <p>Protein Interaction Partner: MROH5, CERS2, HES1, GLUD1, VKORC1, Sec61b, ERLEC1, OS9, SYVN1, DERL1, FBXO6, EDEM1, F8, ASGR2, ASGR1,</p> <p>Protein Size: 384</p>
Molecular Weight:	46 kDa
Gene ID:	60489
NCBI Accession:	NM_021822 , NP_068594

Application Details

Application Notes:	Optimal working dilutions should be determined experimentally by the investigator.
Comment:	Antigen size: 384 AA
Restrictions:	For Research Use only

Handling

Format:	Liquid
Concentration:	Lot specific
Buffer:	Liquid. Purified antibody supplied in 1x PBS buffer with 0.09 % (w/v) sodium azide and 2 % sucrose.
Preservative:	Sodium azide
Precaution of Use:	This product contains Sodium azide: a POISONOUS AND HAZARDOUS SUBSTANCE which should be handled by trained staff only.
Handling Advice:	Avoid repeated freeze-thaw cycles.
Storage:	-20 °C

Handling

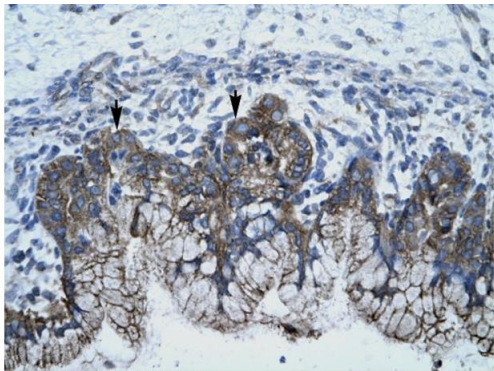
Storage Comment: For short term use, store at 2-8°C up to 1 week. For long term storage, store at -20°C in small aliquots to prevent freeze-thaw cycles.

Images



Western Blotting

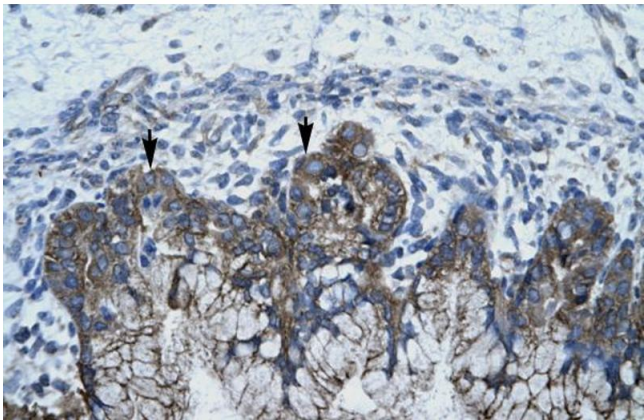
Image 1. WB Suggested Anti-APOBEC3G Antibody Titration: 0.2-1 ug/ml ELISA Titer: 1:1562500 Positive Control: Daudi cell lysate



Rabbit Anti-APOBEC3G Antibody
Catalog Number: ARP33540
Lot Number: QC2479
Paraffin Embedded Tissue: Human Stomach
Cells with Positive label: Epithelial cells of fundic gland (Indicated with Arrows)
Antibody Concentration: 4.0-8.0 µg/ml
Magnification: 400X

Immunohistochemistry

Image 2. Human Stomach



Immunohistochemistry

Image 3. Human Stomach

Please check the [product details page](#) for more images. Overall 4 images are available for ABIN2777994.