

Datasheet for ABIN2778005  
**anti-ZNF236 antibody (Middle Region)**[Go to Product page](#)

## 1 Image

## Overview

Quantity:	100 µL
Target:	ZNF236
Binding Specificity:	Middle Region
Reactivity:	Human, Mouse, Dog, Rabbit, Guinea Pig, Rat, Cow, Horse
Host:	Rabbit
Clonality:	Polyclonal
Conjugate:	This ZNF236 antibody is un-conjugated
Application:	Western Blotting (WB), Immunohistochemistry (IHC)

## Product Details

Immunogen:	The immunogen is a synthetic peptide directed towards the middle region of human ZNF236
Sequence:	VSATGETEGG DICMEEEEEH SDRNASRKSR PEVITFTEEE TAQLAKIRPQ
Predicted Reactivity:	Cow: 93%, Dog: 93%, Guinea Pig: 100%, Horse: 93%, Human: 100%, Mouse: 93%, Rabbit: 100%, Rat: 100%
Characteristics:	This is a rabbit polyclonal antibody against ZNF236. It was validated on Western Blot using a cell lysate as a positive control.
Purification:	Affinity Purified

## Target Details

Target:	ZNF236
---------	--------

## Target Details

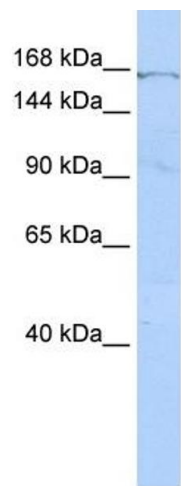
Alternative Name:	ZNF236 ( <a href="#">ZNF236 Products</a> )
Background:	<p>ZNF236 belongs to the krueppel C2H2-type zinc-finger protein family. It contains 30 C2H2-type zinc fingers. ZNF236 may be involved in transcriptional regulation.</p> <p>Alias Symbols: ZNF236A, ZNF236B</p> <p>Protein Interaction Partner: UBC,</p> <p>Protein Size: 1845</p>
Molecular Weight:	204 kDa
Gene ID:	7776
NCBI Accession:	<a href="#">NM_007345</a> , <a href="#">NP_031371</a>
UniProt:	<a href="#">Q9UL36</a>
Pathways:	<a href="#">Carbohydrate Homeostasis</a>

## Application Details

Application Notes:	Optimal working dilutions should be determined experimentally by the investigator.
Comment:	Antigen size: 1845 AA
Restrictions:	For Research Use only

## Handling

Format:	Liquid
Concentration:	Lot specific
Buffer:	Liquid. Purified antibody supplied in 1x PBS buffer with 0.09 % (w/v) sodium azide and 2 % sucrose.
Preservative:	Sodium azide
Precaution of Use:	This product contains Sodium azide: a POISONOUS AND HAZARDOUS SUBSTANCE which should be handled by trained staff only.
Handling Advice:	Avoid repeated freeze-thaw cycles.
Storage:	-20 °C
Storage Comment:	For short term use, store at 2-8°C up to 1 week. For long term storage, store at -20°C in small aliquots to prevent freeze-thaw cycles.



Western Blotting

**Image 1.** WB Suggested Anti-ZNF236 Antibody Titration: 0.2-1 ug/ml ELISA Titer: 1:1562500 Positive Control: HepG2 cell lysate ZNF236 is supported by BioGPS gene expression data to be expressed in HepG2