

Datasheet for ABIN2778008  
**anti-ZNF655 antibody (N-Term)**[Go to Product page](#)

## 1 Image

## Overview

Quantity:	100 µL
Target:	ZNF655
Binding Specificity:	N-Term
Reactivity:	Human, Dog, Rat, Mouse, Guinea Pig, Horse
Host:	Rabbit
Clonality:	Polyclonal
Conjugate:	This ZNF655 antibody is un-conjugated
Application:	Western Blotting (WB)

## Product Details

Immunogen:	The immunogen is a synthetic peptide directed towards the N-terminal region of HUMAN ZNF655
Sequence:	QITISKETFT SEKNNECHEP EKSFSLDSTI DADQRVLRIQ NTDDNDKYDM
Predicted Reactivity:	Dog: 85%, Guinea Pig: 77%, Horse: 85%, Human: 100%, Mouse: 77%, Rat: 85%
Characteristics:	This is a rabbit polyclonal antibody against ZNF655. It was validated on Western Blot.
Purification:	Affinity Purified

## Target Details

Target:	ZNF655
Alternative Name:	ZNF655 ( <a href="#">ZNF655 Products</a> )

## Target Details

Background: ZNF655 is a zinc finger protein. The zinc finger proteins are involved in DNA binding and protein-protein interactions.

Alias Symbols: VIK, VIK-1

Protein Interaction Partner: MAGEA2B, SPERT, KRT40, CARD9, RINT1, MED21, TRAF2, KIFC3, BAG3, HTT, KRTAP4-12, MTUS2, ASUN, TRIM37, TRIP13, MAGEA11, VAV1, CDK4,

Protein Size: 491

Molecular Weight: 54 kDa

Gene ID: 79027

NCBI Accession: [NM\\_138494](#), [NP\\_612503](#)

UniProt: [Q8N720](#)

## Application Details

Application Notes: Optimal working dilution should be determined by the investigator.

Restrictions: For Research Use only

## Handling

Format: Liquid

Concentration: 1 mg/mL

Buffer: Liquid. Purified antibody supplied in 1x PBS buffer with 0.09 % (w/v) sodium azide and 2 % sucrose.

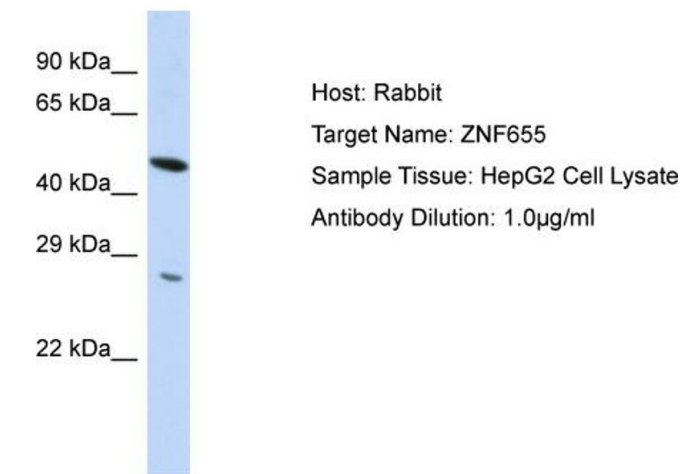
Preservative: Sodium azide

Precaution of Use: This product contains Sodium azide: a POISONOUS AND HAZARDOUS SUBSTANCE which should be handled by trained staff only.

Handling Advice: Avoid repeat freeze-thaw cycles.

Storage: -20 °C

Storage Comment: For short term use, store at 2-8°C up to 1 week. For long term storage, store at -20°C in small aliquots to prevent freeze-thaw cycles.



Western Blotting

**Image 1.** Host: Rabbit Target Name: ZNF655 Sample Type: HepG2 Whole Cell lysates Antibody Dilution: 1.0ug/ml