



Datasheet for ABIN2778033
anti-GRHL1 antibody (C-Term)



[Go to Product page](#)

2 Images

Overview

Quantity:	100 µL
Target:	GRHL1
Binding Specificity:	C-Term
Reactivity:	Human, Rat, Mouse, Cow, Dog, Horse, Pig, Rabbit, Guinea Pig
Host:	Rabbit
Clonality:	Polyclonal
Conjugate:	This GRHL1 antibody is un-conjugated
Application:	Western Blotting (WB)

Product Details

Immunogen:	The immunogen is a synthetic peptide directed towards the C-terminal region of human GRHL2
Sequence:	IPPAVYHPEP TERVVVFDNRN LNTDQFSSGA QAPNAQRRTD DSTFSETFKE
Predicted Reactivity:	Cow: 100%, Dog: 100%, Guinea Pig: 93%, Horse: 100%, Human: 100%, Mouse: 100%, Pig: 100%, Rabbit: 100%, Rat: 100%
Characteristics:	This is a rabbit polyclonal antibody against GRHL1. It was validated on Western Blot.
Purification:	Affinity Purified

Target Details

Target:	GRHL1
Alternative Name:	GRHL1 (GRHL1 Products)

Target Details

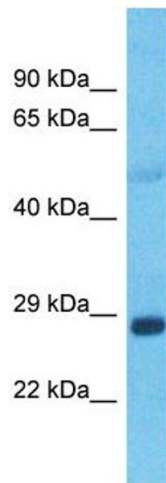
Background:	<p>The protein encoded by this gene is a transcription factor that can act as a homodimer or as a heterodimer with either GRHL1 or GRHL3. Defects in this gene are a cause of non-syndromic sensorineural deafness autosomal dominant type 28 (DFNA28).</p> <p>Alias Symbols: BOM, ECTDS, DFNA28, TFCP2L3</p> <p>Protein Size: 229</p>
Molecular Weight:	25 kDa
Gene ID:	79977
NCBI Accession:	NM_024915 , NP_079191
UniProt:	Q6ISB3
Pathways:	Regulation of Lipid Metabolism by PPARalpha

Application Details

Restrictions:	For Research Use only
---------------	-----------------------

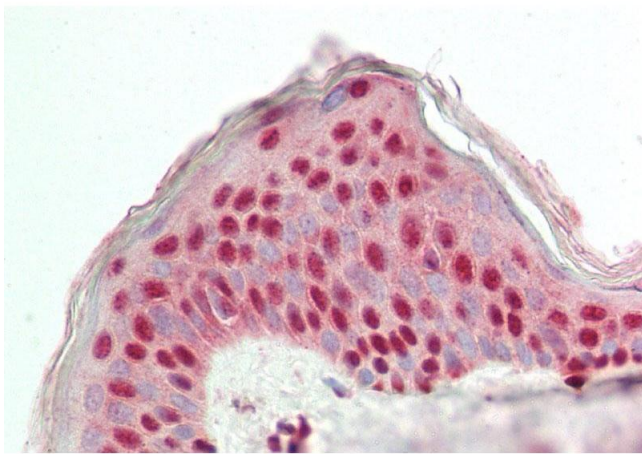
Handling

Format:	Liquid
Concentration:	1 mg/mL
Buffer:	Liquid. Purified antibody supplied in 1x PBS buffer with 0.09 % (w/v) sodium azide and 2 % sucrose.
Preservative:	Sodium azide
Precaution of Use:	This product contains Sodium azide: a POISONOUS AND HAZARDOUS SUBSTANCE which should be handled by trained staff only.
Handling Advice:	Avoid repeat freeze-thaw cycles.
Storage:	-20 °C
Storage Comment:	For short term use, store at 2-8°C up to 1 week. For long term storage, store at -20°C in small aliquots to prevent freeze-thaw cycles.



Western Blotting

Image 1. Host: Rabbit Target Name: GRHL1 Sample Type: Lung tumor lysates Antibody Dilution: 1.0ug/ml



Immunohistochemistry

Image 2. Rabbit Anti-GRHL2 antibody Formalin Fixed Paraffin Embedded Tissue: Human Skin Primary antibody Concentration: 1:200 Secondary Antibody: Donkey anti-Rabbit-Cy3 Secondary Antibody Concentration: 1:200 Magnification: 20x Exposure Time: 0.5-2.0sec