



Datasheet for ABIN2778036  
**anti-ZKSCAN3 antibody (N-Term)**



[Go to Product page](#)

2 Images

Overview

Quantity:	100 µL
Target:	ZKSCAN3
Binding Specificity:	N-Term
Reactivity:	Human, Dog, Rabbit
Host:	Rabbit
Clonality:	Polyclonal
Conjugate:	This ZKSCAN3 antibody is un-conjugated
Application:	Western Blotting (WB)

Product Details

Immunogen:	The immunogen is a synthetic peptide directed towards the N terminal region of human ZNF306
Sequence:	ARELSESTAL DAQSTEDQME LLVIKVEEEEE AGFPSSPDLG SEGSRERFRG
Predicted Reactivity:	Dog: 100%, Human: 100%, Rabbit: 100%
Characteristics:	This is a rabbit polyclonal antibody against ZNF306. It was validated on Western Blot using a cell lysate as a positive control.
Purification:	Affinity Purified

Target Details

Target:	ZKSCAN3
---------	---------

## Target Details

---

Alternative Name:	ZNF306 ( <a href="#">ZKSCAN3 Products</a> )
Background:	ZNF306 is a new candidate transcription factor. Alias Symbols: ZF47, Zfp47, ZFP306, ZNF306, ZNF309, zfp-47, ZSCAN13, dJ874C20.1, dJ874C20.1. Protein Interaction Partner: LZTS2, Protein Size: 538
Molecular Weight:	61 kDa
Gene ID:	80317
NCBI Accession:	<a href="#">NM_024493</a> , <a href="#">NP_077819</a>
UniProt:	<a href="#">Q9BRR0</a>

## Application Details

---

Application Notes:	Optimal working dilutions should be determined experimentally by the investigator.
Comment:	Antigen size: 538 AA
Restrictions:	For Research Use only

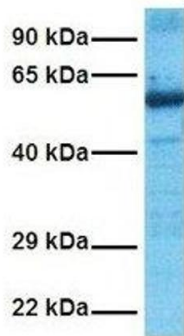
## Handling

---

Format:	Liquid
Concentration:	Lot specific
Buffer:	Liquid. Purified antibody supplied in 1x PBS buffer with 0.09 % (w/v) sodium azide and 2 % sucrose.
Preservative:	Sodium azide
Precaution of Use:	This product contains Sodium azide: a POISONOUS AND HAZARDOUS SUBSTANCE which should be handled by trained staff only.
Handling Advice:	Avoid repeated freeze-thaw cycles.
Storage:	-20 °C
Storage Comment:	For short term use, store at 2-8°C up to 1 week. For long term storage, store at -20°C in small aliquots to prevent freeze-thaw cycles.



## ZNF306



### Western Blotting

**Image 1.** WB Suggested Anti-ZNF306 Antibody Titration:  
0.2-1 ug/ml Positive Control: Human Kidney

### Western Blotting

**Image 2.** Host: Rabbit Target Name: ZNF306 Sample  
Tissue: Human Ovary Tumor Antibody Dilution: 1.0ug/ml