

Datasheet for ABIN2778040

anti-Claudin 17 antibody (Middle Region)



[Go to Product page](#)

3 Images

1 Publication

Overview

Quantity:	100 µL
Target:	Claudin 17 (CLDN17)
Binding Specificity:	Middle Region
Reactivity:	Human, Mouse, Rat, Dog, Pig, Cow, Sheep, Horse, Rabbit, Guinea Pig
Host:	Rabbit
Clonality:	Polyclonal
Conjugate:	This Claudin 17 antibody is un-conjugated
Application:	Western Blotting (WB), Immunohistochemistry (IHC)

Product Details

Immunogen:	The immunogen is a synthetic peptide directed towards the middle region of human CLDN17
Sequence:	KQVQCTGSNE RAKAYLLGTS GVLFLTGF VLPVSWTAN IIIRDFYNPA
Predicted Reactivity:	Cow: 85%, Dog: 100%, Guinea Pig: 92%, Horse: 100%, Human: 100%, Mouse: 100%, Pig: 100%, Rabbit: 92%, Rat: 100%, Sheep: 85%
Characteristics:	This is a rabbit polyclonal antibody against CLDN17. It was validated on Western Blot and immunohistochemistry.
Purification:	Protein A purified

Target Details

Target:	Claudin 17 (CLDN17)
---------	---------------------

Target Details

Alternative Name:	CLDN17 (CLDN17 Products)
Background:	CLDN17, clustered with CLDN8 at human chromosome 21q22.11, is a four-transmembrane protein with WWCC motif, defined by W-X(17-22)-W-X(2)-C-X(8-10)-C. Protein Interaction Partner: LNX1, Protein Size: 224
Molecular Weight:	25 kDa
Gene ID:	26285
NCBI Accession:	NM_012131 , NP_036263
UniProt:	P56750
Pathways:	Cell-Cell Junction Organization , Hepatitis C

Application Details

Application Notes:	Optimal working dilutions should be determined experimentally by the investigator.
Comment:	Antigen size: 224 AA
Restrictions:	For Research Use only

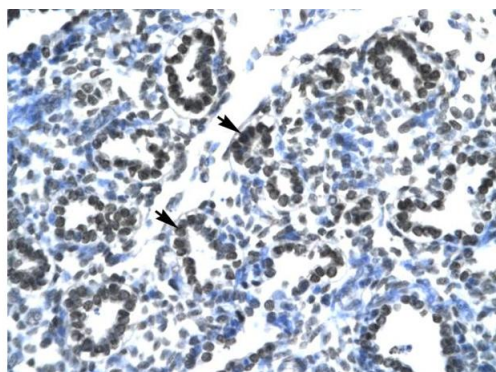
Handling

Format:	Liquid
Concentration:	Lot specific
Buffer:	Liquid. Purified antibody supplied in 1x PBS buffer with 0.09 % (w/v) sodium azide and 2 % sucrose.
Preservative:	Sodium azide
Precaution of Use:	This product contains Sodium azide: a POISONOUS AND HAZARDOUS SUBSTANCE which should be handled by trained staff only.
Handling Advice:	Avoid repeated freeze-thaw cycles.
Storage:	-20 °C
Storage Comment:	For short term use, store at 2-8°C up to 1 week. For long term storage, store at -20°C in small aliquots to prevent freeze-thaw cycles.

Publications

Product cited in: Gerhard, Wagner, Feingold, Shenmen, Grouse, Schuler, Klein, Old, Rasooly, Good, Guyer, Peck, Derge, Lipman, Collins, Jang, Sherry, Feolo, Misquitta, Lee, Rotmistrovsky, Greenhut, Schaefer, Buetow et al.: "The status, quality, and expansion of the NIH full-length cDNA project: the Mammalian Gene Collection (MGC). ..." in: **Genome research**, Vol. 14, Issue 10B, pp. 2121-7, (2004) ([PubMed](#)).

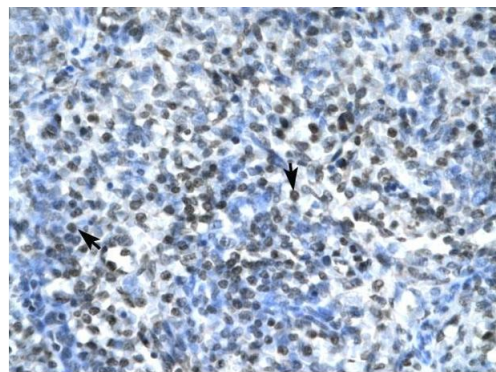
Images



Rabbit Anti-CLDN17 Antibody
Catalog Number: ARP33615
Lot Number: QC2663
Paraffin Embedded Tissue: Human Lung
Cells with Positive label: Alveolar cells (Indicated with Arrows)
Antibody Concentration: 4.0-8.0 µg/ml
Magnification: 400X

Immunohistochemistry

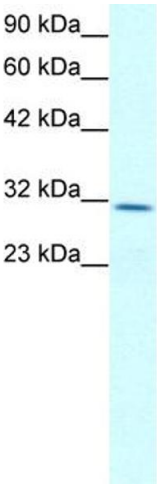
Image 1. Human Lung



Rabbit Anti-CLDN17 Antibody
Catalog Number: ARP33615
Lot Number: QC2663
Paraffin Embedded Tissue: Human Spleen
Cells with Positive label: Spleen cells (Indicated with Arrows)
Antibody Concentration: 4.0-8.0 µg/ml
Magnification: 400X

Immunohistochemistry

Image 2. Human Spleen



Western Blotting

Image 3. WB Suggested Anti-CLDN17 Antibody Titration:
2.0ug/ml Positive Control: Jurkat cell lysate