

Datasheet for ABIN2778041

**anti-Claudin 13 (CLDN13) (C-Term) antibody****2** Images**1** Publication[Go to Product page](#)

## Overview

Quantity:	100 µL
Target:	Claudin 13 (CLDN13)
Binding Specificity:	C-Term
Reactivity:	Mouse
Host:	Rabbit
Clonality:	Polyclonal
Conjugate:	Un-conjugated
Application:	Western Blotting (WB)

## Product Details

Immunogen:	The immunogen is a synthetic peptide directed towards the C terminal region of mouse CLDN13
Sequence:	SSLSLAWTSS LLLLLGGILL CVNIPVCRDF PRCIETPSAR PSGANNDTLD
Predicted Reactivity:	Mouse: 100%
Characteristics:	This is a rabbit polyclonal antibody against CLDN13. It was validated on Western Blot using a cell lysate as a positive control.
Purification:	Protein A purified

## Target Details

Target:	Claudin 13 (CLDN13)
---------	---------------------

## Target Details

Alternative Name:	CLDN13 ( <a href="#">CLDN13 Products</a> )
Background:	<p>CLDN13 is a member of claudin family. It is a four-transmembrane protein with WWCC motif, defined by W-X(17-22)-W-X(2)-C-X(8-10)-C.</p> <p>Alias Symbols: 2500004B14Rik</p> <p>Protein Size: 211</p>
Molecular Weight:	23 kDa
Gene ID:	57255
NCBI Accession:	<a href="#">NM_020504</a> , <a href="#">NP_065250</a>
UniProt:	<a href="#">Q9Z0S4</a>

## Application Details

Application Notes:	Optimal working dilutions should be determined experimentally by the investigator.
Comment:	Antigen size: 211 AA
Restrictions:	For Research Use only

## Handling

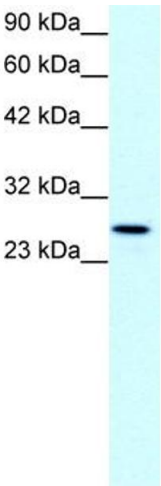
Format:	Liquid
Concentration:	Lot specific
Buffer:	Liquid. Purified antibody supplied in 1x PBS buffer with 0.09 % (w/v) sodium azide and 2 % sucrose.
Preservative:	Sodium azide
Precaution of Use:	This product contains Sodium azide: a POISONOUS AND HAZARDOUS SUBSTANCE which should be handled by trained staff only.
Handling Advice:	Avoid repeated freeze-thaw cycles.
Storage:	-20 °C
Storage Comment:	For short term use, store at 2-8°C up to 1 week. For long term storage, store at -20°C in small aliquots to prevent freeze-thaw cycles.

## Publications

Product cited in:	Timmusk, Merlot, Lövgren, Järvekülg, Berg, Fossum: "Regulator of G protein signalling 16 is a
-------------------	---

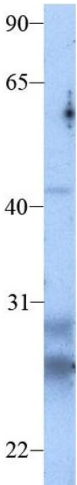
target for a porcine circovirus type 2 protein." in: **The Journal of general virology**, Vol. 90, Issue Pt 10, pp. 2425-36, (2009) ([PubMed](#)).

Images



**Western Blotting**

**Image 1.** WB Suggested Anti-CLDN13 Antibody Titration:  
1.0ug/ml Positive Control: Jurkat cell lysate



**Western Blotting**

**Image 2.** Host: Rabbit Target Name: CLDN13 Sample Type:  
SP2/0 Antibody Dilution: 1.0 ug/ml