

Datasheet for ABIN2778044  
**anti-CLDN8 antibody (C-Term)**[Go to Product page](#)

## 4 Images

## Overview

Quantity:	100 µL
Target:	CLDN8
Binding Specificity:	C-Term
Reactivity:	Human, Rat, Dog, Rabbit, Cow, Horse, Pig
Host:	Rabbit
Clonality:	Polyclonal
Conjugate:	This CLDN8 antibody is un-conjugated
Application:	Western Blotting (WB), Immunohistochemistry (IHC)

## Product Details

Immunogen:	The immunogen is a synthetic peptide directed towards the C terminal region of human CLDN8
Sequence:	IVGGALFCCV FCCNEKSSSY RYSIPSHRTT QKSYHTGKKS PSVYSRSQYV
Predicted Reactivity:	Cow: 85%, Dog: 77%, Horse: 85%, Human: 100%, Pig: 77%, Rabbit: 85%, Rat: 77%
Characteristics:	This is a rabbit polyclonal antibody against CLDN8. It was validated on Western Blot and immunohistochemistry.
Purification:	Protein A purified

## Target Details

Target:	CLDN8
Alternative Name:	CLDN8 ( <a href="#">CLDN8 Products</a> )

## Target Details

Background:	CLDN8, clustered with CLDN17 at human chromosome 21q22.11, is a four-transmembrane protein with WWCC motif, defined by W-X(17-22)-W-X(2)-C-X(8-10)-C. Protein Interaction Partner: SYNE4, CCDC155, TJP1, Protein Size: 225
Molecular Weight:	25 kDa
Gene ID:	9073
NCBI Accession:	<a href="#">NM_199328</a> , <a href="#">NP_955360</a>
UniProt:	<a href="#">P56748</a>
Pathways:	<a href="#">Hepatitis C</a>

## Application Details

Application Notes:	Optimal working dilutions should be determined experimentally by the investigator.
Comment:	Antigen size: 225 AA
Restrictions:	For Research Use only

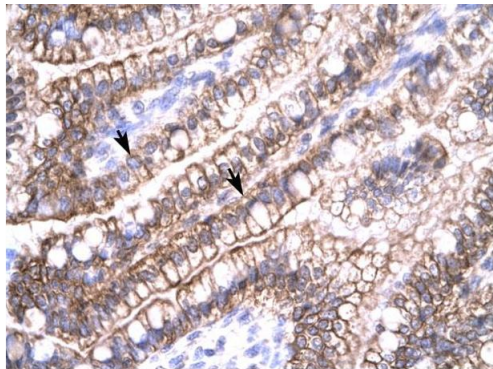
## Handling

Format:	Liquid
Concentration:	Lot specific
Buffer:	Liquid. Purified antibody supplied in 1x PBS buffer with 0.09 % (w/v) sodium azide and 2 % sucrose.
Preservative:	Sodium azide
Precaution of Use:	This product contains Sodium azide: a POISONOUS AND HAZARDOUS SUBSTANCE which should be handled by trained staff only.
Handling Advice:	Avoid repeated freeze-thaw cycles.
Storage:	-20 °C
Storage Comment:	For short term use, store at 2-8°C up to 1 week. For long term storage, store at -20°C in small aliquots to prevent freeze-thaw cycles.



Western Blotting

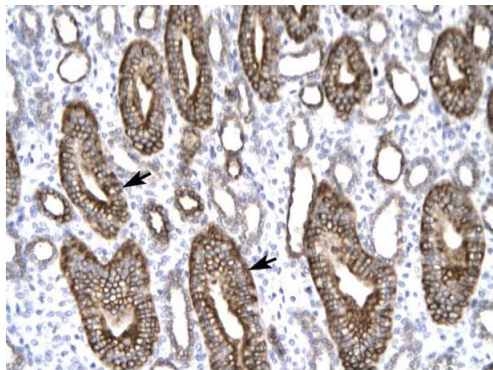
**Image 1.** WB Suggested Anti-CLDN8 Antibody Titration: 0.5-1.0ug/ml Positive Control: HepG2 cell lysate



Rabbit Anti-CLDN8 Antibody  
Catalog Number: ARP33621  
Lot Number: QC2511  
Paraffin Embedded Tissue: Human Intestine  
Cells with Positive label: Epithelial cells of intestinal villus (Indicated with Arrows)  
Antibody Concentration: 4.0-8.0 µg/ml  
Magnification: 400X

Immunohistochemistry

**Image 2.** Human Intestine



Rabbit Anti-CLDN8 Antibody  
Catalog Number: ARP33621  
Lot Number: QC2511  
Paraffin Embedded Tissue: Human Kidney  
Cells with Positive label: Epithelial cells of collecting tubule (Indicated with Arrows)  
Antibody Concentration: 4.0-8.0 µg/ml  
Magnification: 200X

Immunohistochemistry

**Image 3.** Human kidney

Please check the [product details page](#) for more images. Overall 4 images are available for ABIN2778044.