

Datasheet for ABIN2778048  
**anti-Claudin 11 antibody (C-Term)**

## 2 Images

[Go to Product page](#)

## Overview

Quantity:	100 µL
Target:	Claudin 11 (CLDN11)
Binding Specificity:	C-Term
Reactivity:	Human, Rat, Mouse, Cow, Dog, Rabbit, Guinea Pig, Horse
Host:	Rabbit
Clonality:	Polyclonal
Conjugate:	This Claudin 11 antibody is un-conjugated
Application:	Western Blotting (WB), Immunohistochemistry (IHC)

## Product Details

Immunogen:	The immunogen is a synthetic peptide directed towards the C terminal region of human CLDN11
Sequence:	VSGYSLYAG WIGAVLCLVG GCVILCCAGD AQAFGENRFY YTAGSSSPTH
Predicted Reactivity:	Cow: 100%, Dog: 100%, Guinea Pig: 100%, Horse: 100%, Human: 100%, Mouse: 86%, Rabbit: 100%, Rat: 86%
Characteristics:	This is a rabbit polyclonal antibody against CLDN11. It was validated on Western Blot and immunohistochemistry.
Purification:	Affinity Purified

## Target Details

Target:	Claudin 11 (CLDN11)
---------	---------------------

## Target Details

Alternative Name:	CLDN11 ( <a href="#">CLDN11 Products</a> )
Background:	<p>CLDN11 belongs to the claudin family of tight junction associated proteins and is a major component of central nervous system myelin that is necessary for normal CNS function. There is growing evidence that the protein determines the permeability between layers of myelin sheaths via focal adhesion and, with its expression highly regulated during development, may play an important role in cellular proliferation and migration. In addition, the protein is a candidate autoantigen in the development of autoimmune demyelinating disease. The protein encoded by this gene belongs to the claudin family of tight junction associated proteins and is a major component of central nervous system myelin that is necessary for normal CNS function. There is growing evidence that the protein determines the permeability between layers of myelin sheaths via focal adhesion and, with its expression highly regulated during development, may play an important role in cellular proliferation and migration. In addition, the protein is a candidate autoantigen in the development of autoimmune demyelinating disease.</p> <p>Alias Symbols: OSP, OTM</p> <p>Protein Interaction Partner: UBC, TSPAN3, TSPAN4,</p> <p>Protein Size: 207</p>
Molecular Weight:	22 kDa
Gene ID:	5010
NCBI Accession:	<a href="#">NM_005602</a> , <a href="#">NP_005593</a>
UniProt:	<a href="#">O75508</a>
Pathways:	<a href="#">Hepatitis C</a>

## Application Details

Application Notes:	Optimal working dilutions should be determined experimentally by the investigator.
Comment:	Antigen size: 207 AA
Restrictions:	For Research Use only

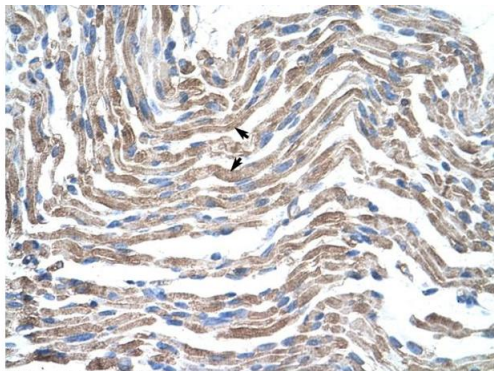
## Handling

Format:	Liquid
Concentration:	Lot specific
Buffer:	Liquid. Purified antibody supplied in 1x PBS buffer with 0.09 % (w/v) sodium azide and 2 %

## Handling

	sucrose.
Preservative:	Sodium azide
Precaution of Use:	This product contains Sodium azide: a POISONOUS AND HAZARDOUS SUBSTANCE which should be handled by trained staff only.
Handling Advice:	Avoid repeated freeze-thaw cycles.
Storage:	-20 °C
Storage Comment:	For short term use, store at 2-8°C up to 1 week. For long term storage, store at -20°C in small aliquots to prevent freeze-thaw cycles.

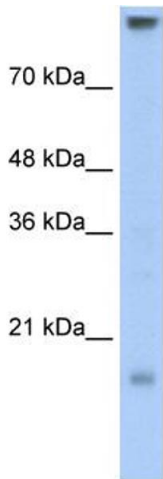
## Images



Rabbit Anti-CLDN11 Antibody  
Catalog Number: ARP33628  
Lot Number: QC2515  
Paraffin Embedded Tissue: Human Muscle  
Cells with Positive label: Skeletal muscle cells (Indicated with Arrows)  
Antibody Concentration: 4.0-8.0 µg/ml  
Magnification: 400X

### Immunohistochemistry

**Image 1.** Human Muscle



### Western Blotting

**Image 2.** WB Suggested Anti-CLDN11 Antibody Titration:  
0.2-1 ug/ml Positive Control: Transfected 293T