

Datasheet for ABIN2778052

anti-Claudin 15 antibody (C-Term)[Go to Product page](#)**1** Image

Overview

Quantity:	100 µL
Target:	Claudin 15 (CLDN15)
Binding Specificity:	C-Term
Reactivity:	Human, Cow
Host:	Rabbit
Clonality:	Polyclonal
Conjugate:	This Claudin 15 antibody is un-conjugated
Application:	Western Blotting (WB)

Product Details

Immunogen:	The immunogen is a synthetic peptide directed towards the C terminal region of human CLDN15
Sequence:	LCSACCCGSD EDPAASARRP YQAPVSVMPV ATSDQEGDSS FGKYGRNAYV
Predicted Reactivity:	Cow: 77%, Human: 100%
Characteristics:	This is a rabbit polyclonal antibody against CLDN15. It was validated on Western Blot using a cell lysate as a positive control.
Purification:	Protein A purified

Target Details

Target:	Claudin 15 (CLDN15)
---------	---------------------

Target Details

Alternative Name:	CLDN15 (CLDN15 Products)
Background:	<p>Tight junctions represent one mode of cell-to-cell adhesion in epithelial or endothelial cell sheets, forming continuous seals around cells and serving as a physical barrier to prevent solutes and water from passing freely through the paracellular space. These junctions are comprised of sets of continuous networking strands in the outwardly facing cytoplasmic leaflet, with complementary grooves in the inwardly facing extracytoplasmic leaflet.</p> <p>Protein Interaction Partner: GEM,</p> <p>Protein Size: 228</p>
Molecular Weight:	24 kDa
Gene ID:	24146
NCBI Accession:	NM_014343 , NP_055158
UniProt:	P56746
Pathways:	Cell-Cell Junction Organization , Hepatitis C

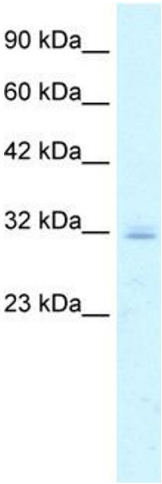
Application Details

Application Notes:	Optimal working dilutions should be determined experimentally by the investigator.
Comment:	Antigen size: 228 AA
Restrictions:	For Research Use only

Handling

Format:	Liquid
Concentration:	Lot specific
Buffer:	Liquid. Purified antibody supplied in 1x PBS buffer with 0.09 % (w/v) sodium azide and 2 % sucrose.
Preservative:	Sodium azide
Precaution of Use:	This product contains Sodium azide: a POISONOUS AND HAZARDOUS SUBSTANCE which should be handled by trained staff only.
Handling Advice:	Avoid repeated freeze-thaw cycles.
Storage:	-20 °C
Storage Comment:	For short term use, store at 2-8°C up to 1 week. For long term storage, store at -20°C in small

aliquots to prevent freeze-thaw cycles.



Western Blotting

Image 1. WB Suggested Anti-CLDN15 Antibody Titration:
5.0ug/ml Positive Control: Jurkat cell lysate