

Datasheet for ABIN2778053

anti-Claudin 15 antibody (Middle Region)[Go to Product page](#)**1** Image

Overview

Quantity:	100 µL
Target:	Claudin 15 (CLDN15)
Binding Specificity:	Middle Region
Reactivity:	Human, Cow, Horse, Dog, Pig
Host:	Rabbit
Clonality:	Polyclonal
Conjugate:	This Claudin 15 antibody is un-conjugated
Application:	Western Blotting (WB)

Product Details

Immunogen:	The immunogen is a synthetic peptide directed towards the middle region of human CLDN15
Sequence:	LSGYIQACRA LMITAILLGF LGLLLGIAGL RCTNIGGLEL SRKAKLAATA
Predicted Reactivity:	Cow: 93%, Dog: 92%, Horse: 86%, Human: 100%, Pig: 93%
Characteristics:	This is a rabbit polyclonal antibody against CLDN15. It was validated on Western Blot using a cell lysate as a positive control.
Purification:	Affinity Purified

Target Details

Target:	Claudin 15 (CLDN15)
Alternative Name:	CLDN15 (CLDN15 Products)

Target Details

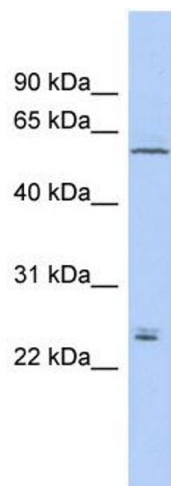
Background:	CLDN15 plays a major role in tight junction-specific obliteration of the intercellular space, through calcium-independent cell-adhesion activity. Alias Symbols: FLJ42715, MGC19536 Protein Interaction Partner: GEM, Protein Size: 228
Molecular Weight:	24 kDa
Gene ID:	24146
NCBI Accession:	NM_014343 , NP_055158
UniProt:	P56746
Pathways:	Cell-Cell Junction Organization , Hepatitis C

Application Details

Application Notes:	Optimal working dilutions should be determined experimentally by the investigator.
Comment:	Antigen size: 228 AA
Restrictions:	For Research Use only

Handling

Format:	Liquid
Concentration:	Lot specific
Buffer:	Liquid. Purified antibody supplied in 1x PBS buffer with 0.09 % (w/v) sodium azide and 2 % sucrose.
Preservative:	Sodium azide
Precaution of Use:	This product contains Sodium azide: a POISONOUS AND HAZARDOUS SUBSTANCE which should be handled by trained staff only.
Handling Advice:	Avoid repeated freeze-thaw cycles.
Storage:	-20 °C
Storage Comment:	For short term use, store at 2-8°C up to 1 week. For long term storage, store at -20°C in small aliquots to prevent freeze-thaw cycles.



Western Blotting

Image 1. WB Suggested Anti-CLDN15 Antibody Titration:
0.2-1 ug/ml ELISA Titer: 1:62500 Positive Control: THP-1
cell lysate