

Datasheet for ABIN2778056
anti-LHX3 antibody (Middle Region)



[Go to Product page](#)

1 Image

Overview

Quantity:	100 µL
Target:	LHX3
Binding Specificity:	Middle Region
Reactivity:	Human, Mouse, Rat, Dog, Horse, Cow, Zebrafish (Danio rerio), Guinea Pig, Rabbit
Host:	Rabbit
Clonality:	Polyclonal
Conjugate:	This LHX3 antibody is un-conjugated
Application:	Western Blotting (WB)

Product Details

Immunogen:	The immunogen is a synthetic peptide directed towards the middle region of human LHX3
Sequence:	RLVCKADYET AKQREAEATA KRPRTTITAK QLETLKSAYN TSPKPARHVR
Predicted Reactivity:	Cow: 100%, Dog: 100%, Guinea Pig: 100%, Horse: 100%, Human: 100%, Mouse: 100%, Rabbit: 79%, Rat: 100%, Zebrafish: 86%
Characteristics:	This is a rabbit polyclonal antibody against LHX3. It was validated on Western Blot using a cell lysate as a positive control.
Purification:	Affinity Purified

Target Details

Target:	LHX3
---------	------

Target Details

Alternative Name:	LHX3 (LHX3 Products)
Background:	<p>LHX3 encodes a member a large protein family which carry the LIM domain, a unique cysteine-rich zinc-binding domain. The encoded protein is a transcription factor that is required for pituitary development and motor neuron specification. Mutations in this gene have been associated with a syndrome of combined pituitary hormone deficiency and rigid cervical spine.</p> <p>This gene encodes a member a large protein family which carry the LIM domain, a unique cysteine-rich zinc-binding domain. The encoded protein is a transcription factor that is required for pituitary development and motor neuron specification. Mutations in this gene have been associated with a syndrome of combined pituitary hormone deficiency and rigid cervical spine.</p> <p>Two transcripts variants encoding distinct isoforms have been identified for this gene.</p> <p>Alias Symbols: DKFZp762A2013, M2-LHX3, LIM3, CPHD3</p> <p>Protein Interaction Partner: ISL2, IFT172, LDB1, CITED2, ISL1, RLIM, LMX1A, LHX1,</p> <p>Protein Size: 402</p>
Molecular Weight:	44 kDa
Gene ID:	8022
NCBI Accession:	NM_014564 , NP_055379

Application Details

Application Notes:	Optimal working dilutions should be determined experimentally by the investigator.
Comment:	Antigen size: 402 AA
Restrictions:	For Research Use only

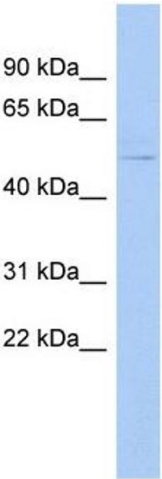
Handling

Format:	Liquid
Concentration:	Lot specific
Buffer:	Liquid. Purified antibody supplied in 1x PBS buffer with 0.09 % (w/v) sodium azide and 2 % sucrose.
Preservative:	Sodium azide
Precaution of Use:	This product contains Sodium azide: a POISONOUS AND HAZARDOUS SUBSTANCE which should be handled by trained staff only.
Handling Advice:	Avoid repeated freeze-thaw cycles.

Handling

Storage:	-20 °C
Storage Comment:	For short term use, store at 2-8°C up to 1 week. For long term storage, store at -20°C in small aliquots to prevent freeze-thaw cycles.

Images



Western Blotting

Image 1. WB Suggested Anti-LHX3 Antibody Titration: 0.2-1 ug/ml ELISA Titer: 1:62500 Positive Control: Human Spleen