

Datasheet for ABIN2778066
anti-NR1H4 antibody (Middle Region)

5 Images

[Go to Product page](#)

Overview

Quantity:	100 µL
Target:	NR1H4
Binding Specificity:	Middle Region
Reactivity:	Human, Mouse, Rat, Dog, Horse, Cow, Rabbit, Guinea Pig
Host:	Rabbit
Clonality:	Polyclonal
Conjugate:	This NR1H4 antibody is un-conjugated
Application:	Western Blotting (WB), Immunohistochemistry (IHC)

Product Details

Immunogen:	The immunogen is a synthetic peptide directed towards the middle region of human NR1H4
Sequence:	AECLLTEIQC KSKRLRKNVK QHADQTVNED SEGRDLRQVT STTKSCREKT
Predicted Reactivity:	Cow: 100%, Dog: 100%, Guinea Pig: 100%, Horse: 100%, Human: 100%, Mouse: 100%, Rabbit: 93%, Rat: 100%
Characteristics:	This is a rabbit polyclonal antibody against NR1H4. It was validated on Western Blot and immunohistochemistry.
Purification:	Affinity Purified

Target Details

Target:	NR1H4
---------	-------

Target Details

Alternative Name:	NR1H4 (NR1H4 Products)
Background:	<p>The NR1H4 gene encodes a protein that has a central role in lipid homeostasis and also regulates carbohydrate metabolism.</p> <p>Alias Symbols: BAR, FXR, HRR-1, HRR1, MGC163445, RIP14</p> <p>Protein Interaction Partner: SMARCD3, HDAC6, SUMO1, NCOR2, ESR1, RRM2, GPS2, RXRG, GAPDH, RXRA, EP300, SIRT1, SRC, NCOA6, CARM1, HIST1H4A, HIST1H3A, PRMT1, NCOR1, XRCC5, PRKDC, XRCC6, NCOA1, CASP8, SMARCD1,</p> <p>Protein Size: 472</p>
Molecular Weight:	54 kDa
Gene ID:	9971
NCBI Accession:	NM_005123 , NP_005114
Pathways:	Nuclear Receptor Transcription Pathway , Steroid Hormone Mediated Signaling Pathway , Regulation of Carbohydrate Metabolic Process

Application Details

Application Notes:	Optimal working dilutions should be determined experimentally by the investigator.
Comment:	Antigen size: 472 AA
Restrictions:	For Research Use only

Handling

Format:	Liquid
Concentration:	Lot specific
Buffer:	Liquid. Purified antibody supplied in 1x PBS buffer with 0.09 % (w/v) sodium azide and 2 % sucrose.
Preservative:	Sodium azide
Precaution of Use:	This product contains Sodium azide: a POISONOUS AND HAZARDOUS SUBSTANCE which should be handled by trained staff only.
Handling Advice:	Avoid repeated freeze-thaw cycles.
Storage:	-20 °C
Storage Comment:	For short term use, store at 2-8°C up to 1 week. For long term storage, store at -20°C in small

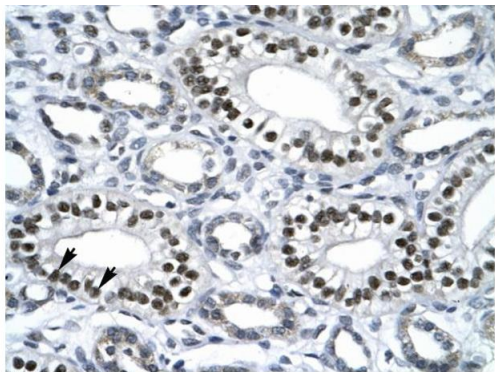
aliquots to prevent freeze-thaw cycles.

Images



Western Blotting

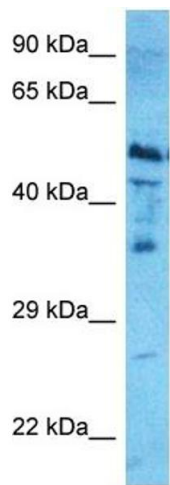
Image 1. WB Suggested Anti-NR1H4 Antibody Titration: 0.2-1 ug/ml Positive Control: Human Lung



Immunohistochemistry

Image 2. Human kidney

Rabbit Anti-NR1H4 Antibody
Catalog Number: ARP33672
Lot Number: QC3098
Paraffin Embedded Tissue: Human Kidney
Cells with Positive label: Epithelial cells of collecting tubule(Indicated with Arrows)
Antibody Concentration: 4.0-8.0 µg/ml
Magnification: 400X



Western Blotting

Image 3. Host: Rabbit Target Name: NR1H4 Sample Type: HepG2 Whole Cell lysates Antibody Dilution: 0.5ug/ml

Please check the [product details page](#) for more images. Overall 5 images are available for ABIN2778066.