

Datasheet for ABIN2778070
anti-MAFB antibody (N-Term)[Go to Product page](#)

4 Images

Overview

Quantity:	100 µL
Target:	MAFB
Binding Specificity:	N-Term
Reactivity:	Human, Rat, Mouse, Cow, Guinea Pig, Zebrafish (Danio rerio), Rabbit, Dog, Horse, Saccharomyces cerevisiae
Host:	Rabbit
Clonality:	Polyclonal
Conjugate:	This MAFB antibody is un-conjugated
Application:	Western Blotting (WB), Immunohistochemistry (IHC)

Product Details

Immunogen:	The immunogen is a synthetic peptide directed towards the N terminal region of human MAFB
Sequence:	MAAELSMGPE LPTSPLAMEY VNDFDLLKFD VKKEPLGRAE RPGRPCTRLQ
Predicted Reactivity:	Cow: 100%, Dog: 85%, Guinea Pig: 100%, Horse: 77%, Human: 100%, Mouse: 100%, Rabbit: 100%, Rat: 100%, Yeast: 82%, Zebrafish: 91%
Characteristics:	This is a rabbit polyclonal antibody against MAFB. It was validated on Western Blot and immunohistochemistry.
Purification:	Protein A purified

Target Details

Target:	MAFB
---------	------

Target Details

Alternative Name:	MAFB (MAFB Products)
Background:	<p>MAFB is a basic leucine zipper (bZIP) transcription factor that plays an important role in the regulation of lineage-specific hematopoiesis. The nuclear protein represses ETS1-mediated transcription of erythroid-specific genes in myeloid cells. The protein encoded by this gene is a basic leucine zipper (bZIP) transcription factor that plays an important role in the regulation of lineage-specific hematopoiesis. The encoded nuclear protein represses ETS1-mediated transcription of erythroid-specific genes in myeloid cells. This gene contains no introns.</p> <p>Alias Symbols: KRML, MGC43127</p> <p>Protein Interaction Partner: MAFB, FOSL1, MAF, FOS, BACH1, ATF4, IKBKE, IRF7, IRF3, ZWINT, ZFP64, ZDHHC2, DDB1, JUN, HOXD12,</p> <p>Protein Size: 323</p>
Molecular Weight:	36 kDa
Gene ID:	9935
NCBI Accession:	NM_005461 , NP_005452
UniProt:	Q9Y5Q3

Application Details

Application Notes:	Optimal working dilutions should be determined experimentally by the investigator.
Comment:	Antigen size: 323 AA
Restrictions:	For Research Use only

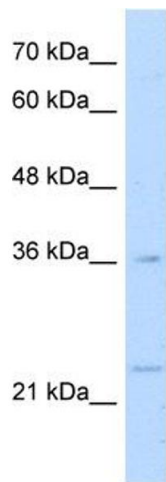
Handling

Format:	Liquid
Concentration:	Lot specific
Buffer:	Liquid. Purified antibody supplied in 1x PBS buffer with 0.09 % (w/v) sodium azide and 2 % sucrose.
Preservative:	Sodium azide
Precaution of Use:	This product contains Sodium azide: a POISONOUS AND HAZARDOUS SUBSTANCE which should be handled by trained staff only.
Handling Advice:	Avoid repeated freeze-thaw cycles.

Handling

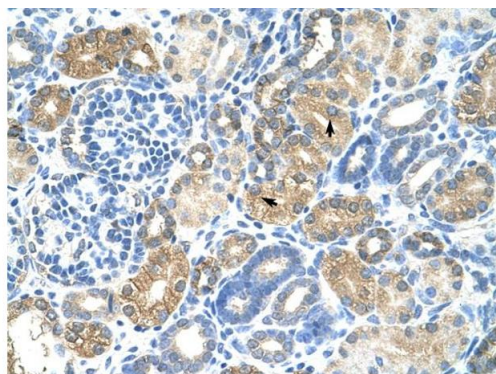
Storage:	-20 °C
Storage Comment:	For short term use, store at 2-8°C up to 1 week. For long term storage, store at -20°C in small aliquots to prevent freeze-thaw cycles.

Images



Western Blotting

Image 1. WB Suggested Anti-MAFB Antibody Titration: 1.25ug/ml Positive Control: HepG2 cell lysate

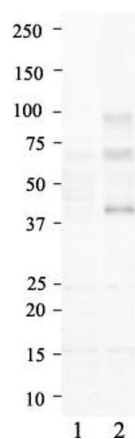


Immunohistochemistry

Image 2. Human kidney

Rabbit Anti-MAFB Antibody
Catalog Number: ARP33682
Lot Number: QC11752
Paraffin Embedded Tissue: Human Kidney
Cells with Positive label: Epithelial cells of renal tubule (Indicated with Arrows)
Antibody Concentration: 4.0-8.0 µg/ml
Magnification: 400X

MAFB



Western Blotting

Image 3. Host: Rabbit Target Name: MAFB Sample Type: Lane 1: Non-overexpressed vector control lysate Lane 2: Transient overexpression lysate of MAFB Antibody Dilution: 1.0ug/ml

Please check the [product details page](#) for more images. Overall 4 images are available for ABIN2778070.