



[Go to Product page](#)

Datasheet for ABIN2778075  
**anti-ZEB2 antibody (N-Term)**

4 Images

Overview

Quantity:	100 µL
Target:	ZEB2
Binding Specificity:	N-Term
Reactivity:	Human, Mouse, Rat, Rabbit, Cow, Horse, Dog, Guinea Pig, Pig
Host:	Rabbit
Clonality:	Polyclonal
Conjugate:	This ZEB2 antibody is un-conjugated
Application:	Western Blotting (WB), Immunohistochemistry (IHC)

Product Details

Immunogen:	The immunogen is a synthetic peptide directed towards the N terminal region of human ZEB2
Sequence:	SETDEEDKLH IAEDDGIANP LDQETSPASV PNHESPHVS QALLPREEEE
Predicted Reactivity:	Cow: 93%, Dog: 93%, Guinea Pig: 93%, Horse: 93%, Human: 100%, Mouse: 86%, Pig: 100%, Rabbit: 86%, Rat: 93%
Characteristics:	This is a rabbit polyclonal antibody against ZEB2. It was validated on Western Blot using a cell lysate as a positive control.
Purification:	Affinity Purified

Target Details

Target:	ZEB2
---------	------

## Target Details

---

Alternative Name: ZEB2 ([ZEB2 Products](#))

---

Background: The ZFHX1B gene is a member of the delta-EF1/Zfh1 family of 2-handed zinc finger/homeodomain proteins. ZFHX1B is strongly transcribed at an early stage in the developing peripheral and central nervous systems of both mice and humans, in all neuronal regions of the brains of 25-week human fetuses and adult mice, and in numerous nonneural tissues. The SMADIP1 gene (also known as SIP1) is a member of the delta-EF1 (ZEB1, MIM 189909)/Zfh1 family of 2-handed zinc finger/homeodomain proteins. SMADIP1 interacts with receptor-mediated, activated full-length SMADs (see MIM 605568) (Verschueren et al., 1999 [PubMed 10400677]).[supplied by OMIM]. Publication Note: This RefSeq record includes a subset of the publications that are available for this gene. Please see the Entrez Gene record to access additional publications. PRIMARYREFSEQ\_SPAN PRIMARY\_IDENTIFIER PRIMARY\_SPAN COMP 1-58 AB056507.1 1-58 59-553 AL118674.1 57-551 554-5558 AB056507.1 553-5557 5559-5583 AI858477.1 1-25 c

Alias Symbols: KIAA0569, SIP-1, SIP1, SMADIP1, ZFHX1B, HSPC082

Protein Interaction Partner: CTBP1, SOX2, SMAD9, SMAD3, SMAD2, SMAD1, APP, HDAC4, CBX4, SUMO1, UBE2I, ELAVL1, UBC, MTA2, MTA1, RBBP7, RBBP4, HDAC2, HDAC1, CEBPA, COPS6, SMAD5, CTBP2,

Protein Size: 1214

---

Molecular Weight: 136 kDa

---

Gene ID: 9839

---

NCBI Accession: [NM\\_014795](#), [NP\\_055610](#)

---

UniProt: [O60315](#)

---

Pathways: [Tube Formation](#)

---

## Application Details

---

Application Notes: Optimal working dilutions should be determined experimentally by the investigator.

---

Comment: Antigen size: 1214 AA

---

Restrictions: For Research Use only

---

## Handling

---

Format: Liquid

---

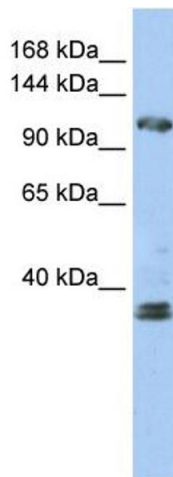
Concentration: Lot specific

---

## Handling

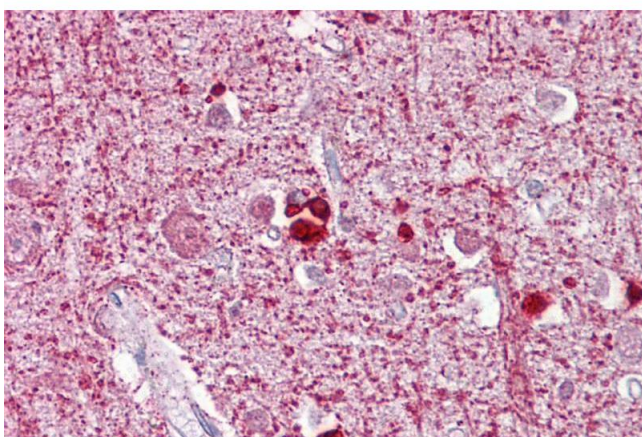
Buffer:	Liquid. Purified antibody supplied in 1x PBS buffer with 0.09 % (w/v) sodium azide and 2 % sucrose.
Preservative:	Sodium azide
Precaution of Use:	This product contains Sodium azide: a POISONOUS AND HAZARDOUS SUBSTANCE which should be handled by trained staff only.
Handling Advice:	Avoid repeated freeze-thaw cycles.
Storage:	-20 °C
Storage Comment:	For short term use, store at 2-8°C up to 1 week. For long term storage, store at -20°C in small aliquots to prevent freeze-thaw cycles.

## Images



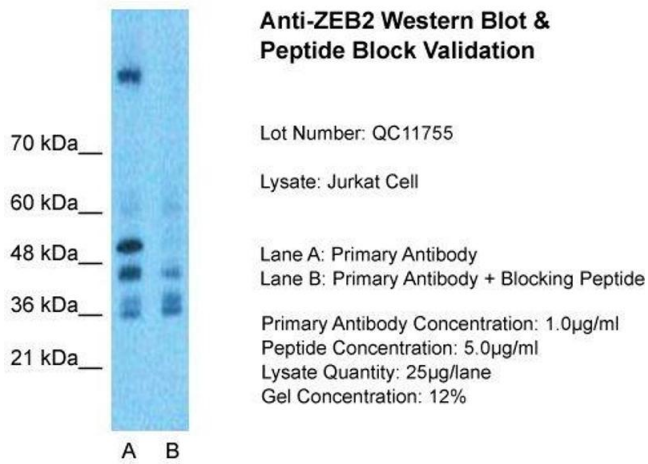
### Western Blotting

**Image 1.** WB Suggested Anti-ZEB2 Antibody Titration: 0.2-1 ug/ml ELISA Titer: 1:62500 Positive Control: Jurkat cell lysate



### Immunohistochemistry

**Image 2.** Immunohistochemistry with Brain, cortex tissue at an antibody concentration of 5µg/ml using anti-ZEB2 antibody (ARP33695\_P050)



### Western Blotting

**Image 3.** Host: Rabbit Target Name: ZEB2 Sample Type: Jurkat Whole Cell Lane A: Primary Antibody Lane B: Primary Antibody + Blocking Peptide Primary Antibody Concentration: 1ug/ml Peptide Concentration: 5ug/ml Lysate Quantity: 25ug/lane/Lane Gel Concentration: 0.12

Please check the [product details page](#) for more images. Overall 4 images are available for ABIN2778075.