

Datasheet for ABIN2778080
anti-MLL4 antibody (N-Term)[Go to Product page](#)

1 Image

Overview

Quantity:	100 µL
Target:	MLL4
Binding Specificity:	N-Term
Reactivity:	Human, Mouse, Rat, Dog, Cow, Guinea Pig, Horse, Rabbit, Saccharomyces cerevisiae
Host:	Rabbit
Clonality:	Polyclonal
Conjugate:	This MLL4 antibody is un-conjugated
Application:	Western Blotting (WB)

Product Details

Immunogen:	The immunogen is a synthetic peptide directed towards the N terminal region of human MLL4
Sequence:	WAGPRVQRGR GRGRGRGWGP SRGCVPEEES SDGESDEEEF QGFHSDDEDVA
Predicted Reactivity:	Cow: 92%, Dog: 85%, Guinea Pig: 92%, Horse: 83%, Human: 100%, Mouse: 92%, Rabbit: 92%, Rat: 92%, Yeast: 91%
Characteristics:	This is a rabbit polyclonal antibody against MLL4. It was validated on Western Blot using a cell lysate as a positive control.
Purification:	Protein A purified

Target Details

Target:	MLL4
---------	------

Target Details

Alternative Name:	MLL4 (MLL4 Products)
Background:	<p>MLL4 a protein which contains multiple domains including a CXXC zinc finger, three PHD zinc fingers, two FY-rich domains, and a SET (suppressor of variegation, enhancer of zeste, and trithorax) domain. The SET domain is a conserved C-terminal domain that characterizes proteins of the MLL (mixed-lineage leukemia) family. MLL4 is ubiquitously expressed in adult tissues. It is also amplified in solid tumor cell lines, and may be involved in human cancer</p> <p>Alias Symbols: HRX2, MLL2, TRX2, WBP7, MLL4</p> <p>Protein Interaction Partner: UBC, SMAD3, ZNF512B, ATXN1, HIST2H3C, WDR5, ASH2L, RBBP5, SEPT8, RPP14, NREP, TSC22D1, TK1, SMN1, RAP1B, PIN1, GRB7, RCC1, CDKN1A, ATP1B1, ANXA7, ANXA1, BCL6, WDR82, PAGR1, PAXIP1, NCOA6, SMARCB1, PRPF40A,</p> <p>Protein Size: 582</p>
Molecular Weight:	64 kDa
Gene ID:	9757
Pathways:	Intracellular Steroid Hormone Receptor Signaling Pathway , Regulation of Intracellular Steroid Hormone Receptor Signaling , Warburg Effect

Application Details

Application Notes:	Optimal working dilutions should be determined experimentally by the investigator.
Comment:	Antigen size: 582 AA
Restrictions:	For Research Use only

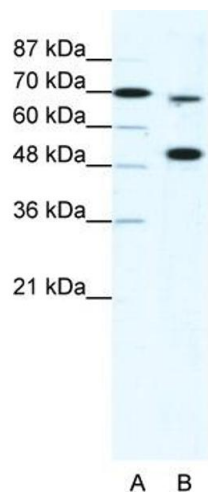
Handling

Format:	Liquid
Concentration:	Lot specific
Buffer:	Liquid. Purified antibody supplied in 1x PBS buffer with 0.09 % (w/v) sodium azide and 2 % sucrose.
Preservative:	Sodium azide
Precaution of Use:	This product contains Sodium azide: a POISONOUS AND HAZARDOUS SUBSTANCE which should be handled by trained staff only.
Handling Advice:	Avoid repeated freeze-thaw cycles.
Storage:	-20 °C

Handling

Storage Comment: For short term use, store at 2-8°C up to 1 week. For long term storage, store at -20°C in small aliquots to prevent freeze-thaw cycles.

Images



Western Blotting

Image 1. WB Suggested Anti-MLL4 Antibody Titration: 5ug/ml Positive Control: HepG2 cell lysate KMT2B is strongly supported by BioGPS gene expression data to be expressed in Human HepG2 cells