

Datasheet for ABIN2778083
anti-ZNF646 antibody (N-Term)[Go to Product page](#)

1 Image

Overview

Quantity:	100 µL
Target:	ZNF646
Binding Specificity:	N-Term
Reactivity:	Human, Horse, Rat, Dog, Mouse, Pig
Host:	Rabbit
Clonality:	Polyclonal
Conjugate:	This ZNF646 antibody is un-conjugated
Application:	Western Blotting (WB)

Product Details

Immunogen:	The immunogen is a synthetic peptide directed towards the N terminal region of human ZNF646
Sequence:	VVNFTGGQEP TQSPPAEEER RYKCSQCGKT YKHAGSLTNH RQSHTLGIYP
Predicted Reactivity:	Dog: 92%, Horse: 100%, Human: 100%, Mouse: 77%, Pig: 100%, Rat: 100%
Characteristics:	This is a rabbit polyclonal antibody against ZNF646. It was validated on Western Blot using a cell lysate as a positive control.
Purification:	Affinity Purified

Target Details

Target:	ZNF646
---------	--------

Target Details

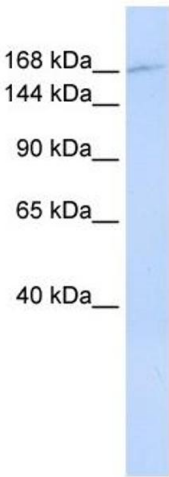
Alternative Name:	ZNF646 (ZNF646 Products)
Background:	<p>ZNF646 belongs to the krueppel C2H2-type zinc-finger protein family and may be involved in transcriptional regulation.</p> <p>Alias Symbols: KIAA0296</p> <p>Protein Interaction Partner: C11orf30, PRKG1, MDFI, UBC, NINL, UBE2I, TRAF2,</p> <p>Protein Size: 1832</p>
Molecular Weight:	201 kDa
Gene ID:	9726
NCBI Accession:	NM_014699 , NP_055514
UniProt:	Q8IVD8

Application Details

Application Notes:	Optimal working dilutions should be determined experimentally by the investigator.
Comment:	Antigen size: 1832 AA
Restrictions:	For Research Use only

Handling

Format:	Liquid
Concentration:	Lot specific
Buffer:	Liquid. Purified antibody supplied in 1x PBS buffer with 0.09 % (w/v) sodium azide and 2 % sucrose.
Preservative:	Sodium azide
Precaution of Use:	This product contains Sodium azide: a POISONOUS AND HAZARDOUS SUBSTANCE which should be handled by trained staff only.
Handling Advice:	Avoid repeated freeze-thaw cycles.
Storage:	-20 °C
Storage Comment:	For short term use, store at 2-8°C up to 1 week. For long term storage, store at -20°C in small aliquots to prevent freeze-thaw cycles.



Western Blotting

Image 1. WB Suggested Anti-ZNF646 Antibody Titration:
0.2-1 ug/ml ELISA Titer: 1:62500 Positive Control: Human
Liver