



Datasheet for ABIN2778086  
**anti-MORF4L2 antibody (N-Term)**



[Go to Product page](#)

4 Images

Overview

Quantity:	100 µL
Target:	MORF4L2
Binding Specificity:	N-Term
Reactivity:	Human, Mouse, Rat, Dog, Cow, Horse, Pig, Rabbit, Guinea Pig
Host:	Rabbit
Clonality:	Polyclonal
Conjugate:	This MORF4L2 antibody is un-conjugated
Application:	Western Blotting (WB), Immunohistochemistry (IHC)

Product Details

Immunogen:	The immunogen is a synthetic peptide directed towards the N terminal region of human MORF4L2
Sequence:	PPSGSVRKTR KNKQKTPGNG DGGSTSEAPQ PPRKKRARAD PTVESSEAFK
Predicted Reactivity:	Cow: 93%, Dog: 100%, Guinea Pig: 93%, Horse: 100%, Human: 100%, Mouse: 100%, Pig: 100%, Rabbit: 100%, Rat: 100%
Characteristics:	This is a rabbit polyclonal antibody against MORF4L2. It was validated on Western Blot and immunohistochemistry.
Purification:	Protein A purified

Target Details

Target:	MORF4L2
---------	---------

## Target Details

---

Alternative Name:	MORF4L2 ( <a href="#">MORF4L2 Products</a> )
Background:	<p>MORF4L2 is a member of the mortality factor (MORF) family of putative transcriptional regulators</p> <p>Alias Symbols: MRGX, MORFL2</p> <p>Protein Interaction Partner: FAM9B, DDIT4L, MRFAP1L1, MRFAP1, L3MBTL3, LZTS2, ZBTB10, GRAMD3, MRGBP, CEP55, THAP1, ZBTB7B, KLHL3, ZBTB43, PNMA2, IKZF1, TNIP1, ZBTB14, TNNT2, BEND7, GOLGA2, PHC2, AES, ITGB1BP2, UBC, RPA3, RPA2, RPA1, CDR2, SUMO2, TAB1, HDAC1, EPC1, PALB2, PHF12, EP400</p> <p>Protein Size: 288</p>
Molecular Weight:	32 kDa
Gene ID:	9643
NCBI Accession:	<a href="#">NM_012286</a> , <a href="#">NP_036418</a>
UniProt:	<a href="#">Q15014</a>
Pathways:	<a href="#">Regulation of Muscle Cell Differentiation</a>

## Application Details

---

Application Notes:	Optimal working dilutions should be determined experimentally by the investigator.
Comment:	Antigen size: 288 AA
Restrictions:	For Research Use only

## Handling

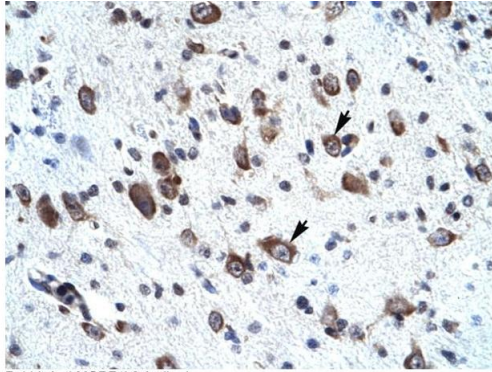
---

Format:	Liquid
Concentration:	Lot specific
Buffer:	Liquid. Purified antibody supplied in 1x PBS buffer with 0.09 % (w/v) sodium azide and 2 % sucrose.
Preservative:	Sodium azide
Precaution of Use:	This product contains Sodium azide: a POISONOUS AND HAZARDOUS SUBSTANCE which should be handled by trained staff only.
Handling Advice:	Avoid repeated freeze-thaw cycles.
Storage:	-20 °C

## Handling

Storage Comment: For short term use, store at 2-8°C up to 1 week. For long term storage, store at -20°C in small aliquots to prevent freeze-thaw cycles.

## Images



Rabbit Anti-MORF4L2 Antibody  
Catalog Number: ARP33721  
Lot Number: QC3270  
Paraffin Embedded Tissue: Human Brain  
Cells with Positive label: Neural cells (Indicated with Arrows)  
Antibody Concentration: 4.0-8.0 µg/ml  
Magnification: 400X

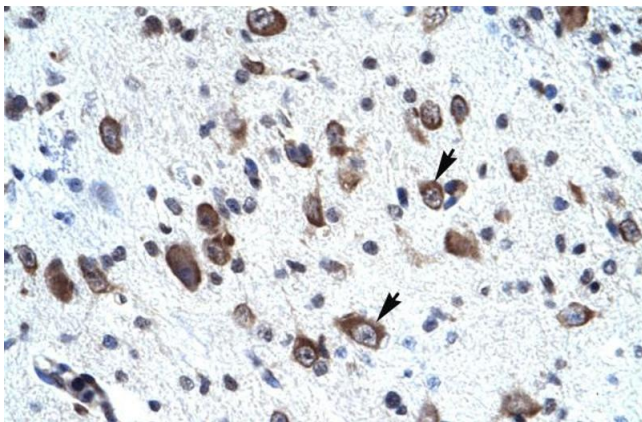


### Immunohistochemistry

**Image 1.** Rabbit Anti-MORF4L2 Antibody Paraffin Embedded Tissue: Human neural cell Cellular Data: Epithelial cells of renal tubule Antibody Concentration: 4.0-8.0 ug/ml Magnification: 400X

### Western Blotting

**Image 2.** WB Suggested Anti-MORF4L2 Antibody Titration: 0.2ug/ml Positive Control: Human brain



### Immunohistochemistry (Paraffin-embedded Sections)

**Image 3.** Rabbit Anti-MORF4L2 Antibody ,Paraffin Embedded Tissue: Human neural cell Cellular Data: Epithelial cells of renal tubule Antibody Concentration: 4.0-8.0 µg/mL Magnification:.00X

Please check the [product details page](#) for more images. Overall 4 images are available for ABIN2778086.