

Datasheet for ABIN2778088

anti-NFE2L3 antibody (Middle Region)[Go to Product page](#)**1** Image

Overview

Quantity:	100 µL
Target:	NFE2L3
Binding Specificity:	Middle Region
Reactivity:	Human, Cow, Rat, Mouse, Rabbit, Dog, Guinea Pig
Host:	Rabbit
Clonality:	Polyclonal
Conjugate:	This NFE2L3 antibody is un-conjugated
Application:	Western Blotting (WB)

Product Details

Immunogen:	The immunogen is a synthetic peptide directed towards the middle region of human NFE2L3
Sequence:	NPEQTLPGTN LTGFLSPVDN HMRNLTSQDL LYDLIDINIFD EINLMSLATE
Predicted Reactivity:	Cow: 86%, Dog: 93%, Guinea Pig: 86%, Human: 100%, Mouse: 93%, Rabbit: 92%, Rat: 93%
Characteristics:	This is a rabbit polyclonal antibody against NFE2L3. It was validated on Western Blot using a cell lysate as a positive control.
Purification:	Affinity Purified

Target Details

Target:	NFE2L3
Alternative Name:	NFE2L3 (NFE2L3 Products)

Target Details

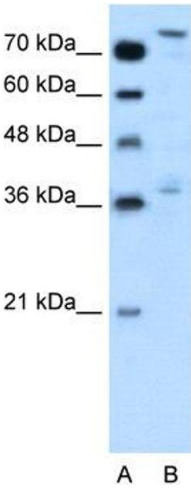
Background:	NFE2L3 activates erythroid-specific, globin gene expression. Alias Symbols: NRF3 Protein Interaction Partner: BACH2, MAFF, CREB3, NFE2L3, NFE2L2, NFE2L1, NFE2, MAFG, UBC, MAFK, Protein Size: 694
Molecular Weight:	76 kDa
Gene ID:	9603
NCBI Accession:	NM_004289 , NP_004280
UniProt:	Q9Y4A8

Application Details

Application Notes:	Optimal working dilutions should be determined experimentally by the investigator.
Comment:	Antigen size: 694 AA
Restrictions:	For Research Use only

Handling

Format:	Liquid
Concentration:	Lot specific
Buffer:	Liquid. Purified antibody supplied in 1x PBS buffer with 0.09 % (w/v) sodium azide and 2 % sucrose.
Preservative:	Sodium azide
Precaution of Use:	This product contains Sodium azide: a POISONOUS AND HAZARDOUS SUBSTANCE which should be handled by trained staff only.
Handling Advice:	Avoid repeated freeze-thaw cycles.
Storage:	-20 °C
Storage Comment:	For short term use, store at 2-8°C up to 1 week. For long term storage, store at -20°C in small aliquots to prevent freeze-thaw cycles.



Western Blotting

Image 1. WB Suggested Anti-NFE2L3 Antibody Titration:
0.2-1 ug/ml Positive Control: HepG2 cell lysate